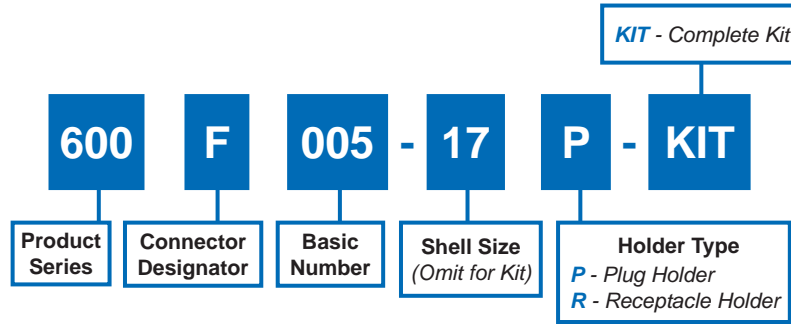


600F005
Plug and Receptacle Holder
 MIL-DTL-27599, MIL-DTL-38999 Series I



NO POLARIZATION REQUIRED

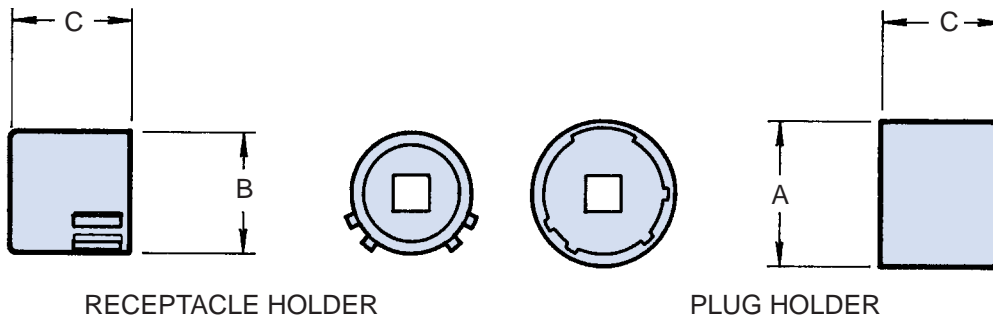


TABLE I: Dash Number, Torque and Dimensions

| Dash No. | Torque Max (In/lbs) | A Dia Max | B Dia Max | C Dim Max |
|----------|---------------------|--------------|--------------|--------------|
| 09 | 40 | .577 (14.7) | .438 (11.1) | 1.031 (26.2) |
| 11 | 40 | .709 (18.0) | .566 (14.4) | 1.031 (26.2) |
| 13 | 40 | .829 (21.1) | .678 (17.2) | 1.031 (26.2) |
| 15 | 40 | .954 (24.2) | .803 (20.4) | 1.031 (26.2) |
| 17 | 40 | 1.107 (28.1) | .928 (23.6) | 1.031 (26.2) |
| 19 | 40 | 1.190 (30.2) | 1.033 (26.2) | 1.031 (26.2) |
| 21 | 80 | 1.315 (33.4) | 1.158 (29.4) | 1.031 (26.2) |
| 23 | 80 | 1.440 (36.6) | 1.283 (32.6) | 1.031 (26.2) |
| 25 | 80 | 1.565 (39.8) | 1.408 (35.8) | 1.031 (26.2) |

| APPLICATION NOTES |
|--|
| 1. Metric dimensions (mm) are indicated in parentheses. |
| 2. Material: Case hardened carbon steel with electroless nickel finish. |
| 3. Receptacle and plug holder drives: 1/4" - Shell sizes 08, 10, 12; 3/8" - Shell sizes 14 and up. |

Dimensions in inches (millimeters) and are subject to change without notice.