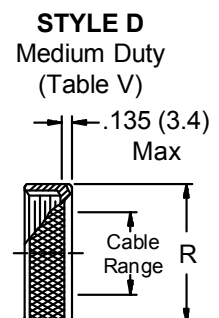
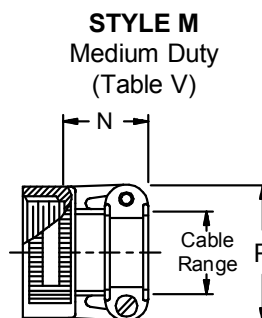
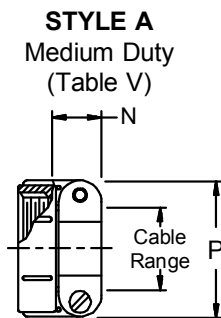
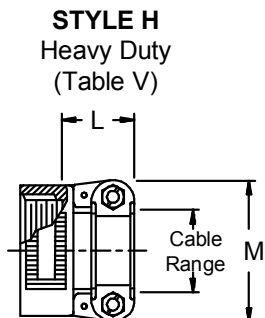
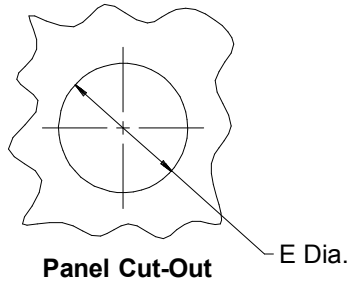
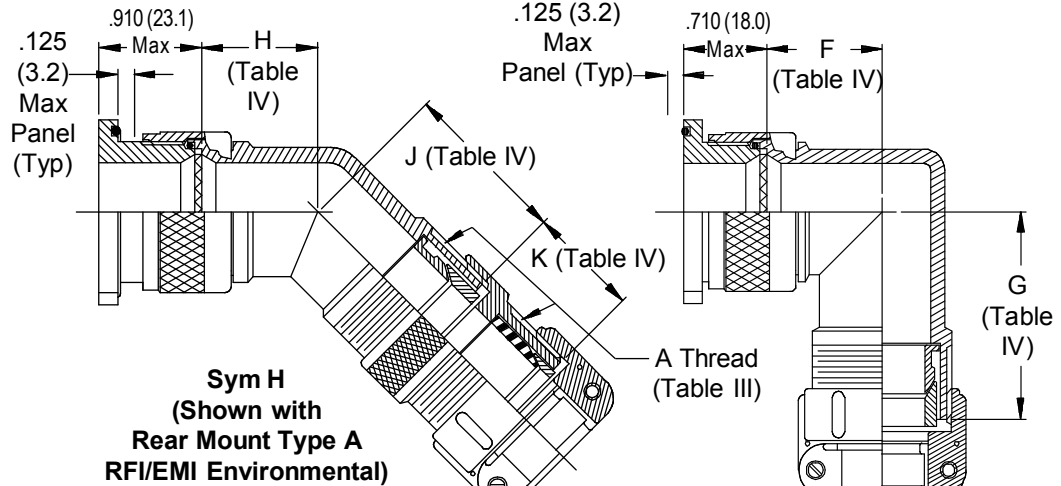
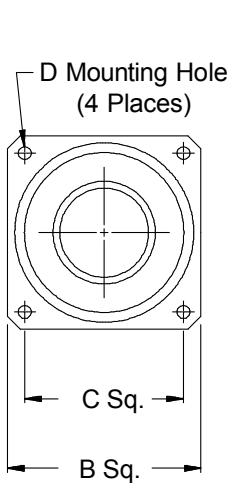
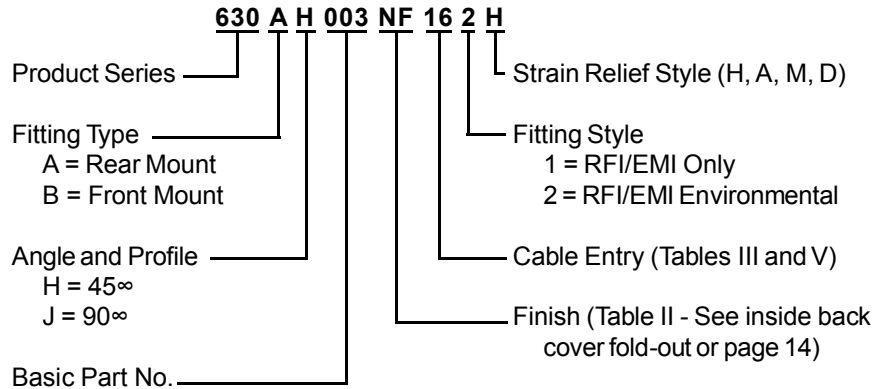


**Single Overall  
 EMI/RFI  
 Shield Termination**



**630-003**  
**EMI/RFI Environmental Bulkhead Feed-Through**  
with Strain Relief  
**Front and Rear Panel Mount - 45° and 90°**



**TABLE III: CABLE ENTRY**

Dash No.	Clamp Size	Cable Range		A Thread Unified	B Dim	C Sq. ± .010 (± .3)	D Dia		E Dia ± .010 (± .3)
		Min	Max				+ .015 (-0.000)	(+ .4) (-.0)	
01	03	.157 (4.0)	.250 (6.4)	1/2 -28	.885 (22.5)	.593 (15.1)	.120 (3.0)	.515 (13.1)	
03	04	.187 (4.7)	.312 (7.9)	5/8 -24	1.104 (28.0)	.812 (20.6)	.120 (3.0)	.640 (16.3)	
05	06	.281 (7.1)	.437 (11.1)	3/4 -20	1.197 (30.4)	.906 (23.0)	.120 (3.0)	.765 (19.4)	
07	08	.344 (8.7)	.562 (14.3)	7/8 -20	1.291 (32.8)	.968 (24.6)	.120 (3.0)	.890 (22.6)	
09	10	.375 (9.5)	.625 (15.9)	1 -20	1.385 (35.2)	1.062 (27.0)	.120 (3.0)	1.015 (25.8)	
11	12	.438 (11.1)	.750 (19.1)	1 3/16 -18	1.635 (41.5)	1.250 (31.8)	.120 (3.0)	1.202 (30.5)	
13	16	.625 (15.9)	.937 (23.8)	1 7/16 -18	1.760 (44.7)	1.375 (34.9)	.147 (3.7)	1.452 (36.9)	
15	20	.875 (22.2)	1.250 (31.8)	1 3/4 -18	2.010 (51.1)	1.562 (39.7)	.147 (3.7)	1.765 (44.8)	
17	24	1.000 (25.4)	1.375 (34.9)	2 -18	2.260 (57.4)	1.750 (44.5)	.173 (4.4)	2.015 (51.2)	
19	28	1.250 (31.8)	1.625 (41.3)	2 1/4 -16	2.510 (63.8)	1.938 (49.2)	.173 (4.4)	2.265 (57.5)	
21	32	1.437 (36.5)	1.875 (47.6)	2 1/2 -16	2.781 (70.6)	2.188 (55.6)	.173 (4.4)	2.515 (63.9)	
23	40	1.875 (47.6)	2.250 (57.2)	3 -16	3.281 (83.3)	2.625 (66.7)	.173 (4.4)	3.015 (76.6)	

**TABLE IV: ELBOW DIMENSIONS**

Dash No.	Clamp Size	F Max	G Max	H Max	J Max	K Max
01	03	.750 (19.1)	1.000 (25.4)	.639 (16.2)	.890 (22.6)	.670 (17.0)
03	04	.810 (20.6)	1.060 (26.9)	.664 (16.9)	.920 (23.4)	.670 (17.0)
05	06	.870 (22.1)	1.125 (28.6)	.688 (17.5)	.940 (23.9)	.670 (17.0)
07	08	.920 (23.4)	1.190 (30.2)	.705 (17.9)	.970 (24.6)	.670 (17.0)
09	10	.980 (24.9)	1.250 (31.8)	.732 (18.6)	.990 (25.1)	.670 (17.0)
11	12	1.080 (27.4)	1.330 (33.8)	.773 (19.6)	1.020 (25.9)	.670 (17.0)
13	16	1.200 (30.5)	1.480 (37.6)	.823 (20.9)	1.090 (27.7)	.670 (17.0)
15	20	1.480 (37.6)	1.781 (45.2)	1.041 (26.4)	1.322 (33.6)	.700 (17.8)
17	24	1.610 (40.9)	1.938 (49.2)	1.092 (27.7)	1.425 (36.2)	.700 (17.8)
19	28	1.720 (43.7)	2.045 (51.9)	1.138 (28.9)	1.475 (37.5)	.700 (17.8)
21	32	1.830 (46.5)	2.218 (56.3)	1.184 (30.1)	1.578 (40.1)	.820 (20.8)
23	40	2.080 (52.8)	2.594 (65.9)	1.287 (32.7)	1.802 (45.8)	.820 (20.8)

**TABLE V: CABLE ENTRY**

Dash No.	Clamp Size	L Max	M Max	N Max	P Max	R Max
01	03	---	---	.760 (19.3)	.843 (21.4)	.630 (16.0)
03	04	.780 (19.8)	.957 (24.3)	.760 (19.3)	.906 (23.0)	.755 (19.2)
05	06	.780 (19.8)	1.145 (29.1)	.760 (19.3)	1.093 (27.8)	.942 (23.9)
07	08	.780 (19.8)	1.332 (33.8)	.760 (19.3)	1.187 (30.1)	1.067 (27.1)
09	10	.780 (19.8)	1.332 (33.8)	.760 (19.3)	1.281 (32.5)	1.192 (30.3)
11	12	.811 (20.6)	1.551 (39.4)	.760 (19.3)	1.500 (38.1)	1.380 (35.1)
13	16	.905 (23.0)	1.770 (45.0)	1.073 (27.3)	1.719 (43.7)	1.535 (39.0)
15	20	1.092 (27.7)	2.113 (53.7)	1.323 (33.6)	2.062 (52.4)	1.848 (46.9)
17	24	1.124 (28.5)	2.363 (60.0)	1.323 (33.6)	2.312 (58.7)	2.255 (57.3)
19	28	1.399 (35.5)	2.770 (70.4)	1.572 (39.9)	2.719 (69.1)	2.505 (63.6)
21	32	1.399 (35.5)	3.020 (76.7)	1.572 (39.9)	2.969 (75.4)	2.755 (70.0)
23	40	---	---	1.572 (39.9)	3.531 (89.7)	3.255 (82.7)

1. Metric dimensions (mm) are indicated in parentheses.
2. Cable range is defined as the accommodations range for the wire bundle or cable. Dimensions shown are not intended for inspection criteria.