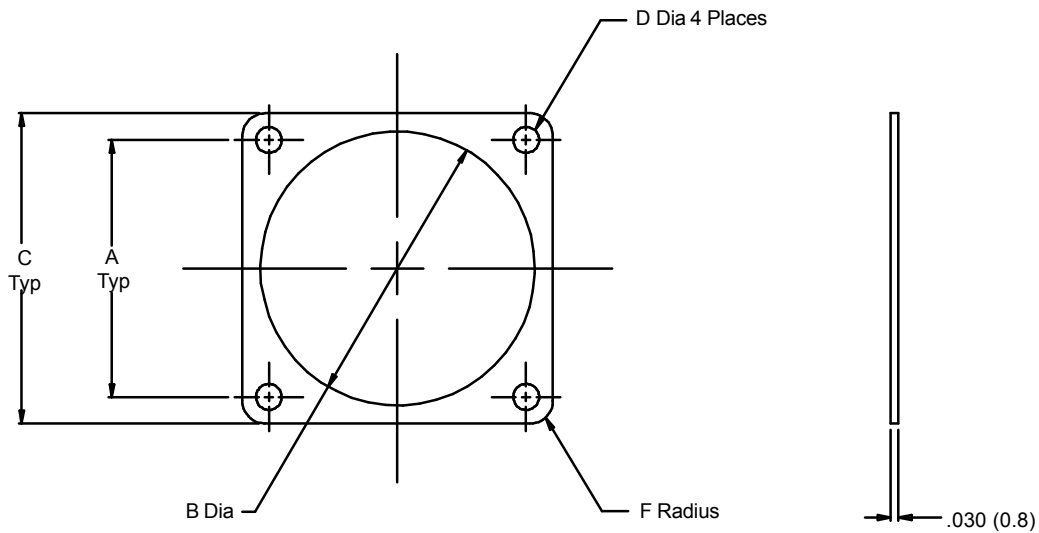


**930 - 001 F 02**

Product Series \_\_\_\_\_  
Basic Number \_\_\_\_\_  
Dash Number (Table I) \_\_\_\_\_  
Material Symbol (Table II) \_\_\_\_\_

**NOTES:**

1. Identified by bag and tag in suitable quantities.
2. Metric dimensions (mm) are indicated in parentheses.

**930-001**  
**Gasket for Flange Mount**  
**Receptacle Connector**



Miscellaneous  
 Accessories

**TABLE I: DASH NUMBER**

Dash No.	MIL-DTL-26482, 26500, 83723		MIL-DTL-38999		A		B Dia		C		D Dia		F Rad	
	Series I & III NAS1599 B&T	Series I & II	Series III & IV	AS81703	±.005 (0.1)	±.007 (0.2)	±.008 (0.2)	±.005 (0.1)	±.015 (0.4)					
01	8	8	-	-	.595 (15.1)	.562 (14.3)	.812 (20.6)	.125 (3.2)	.105 (2.7)					
02	-	-	-	3	.625 (15.9)	.603 (15.3)	.896 (22.8)	.125 (3.2)	.105 (2.7)					
03	10	9 & 10	9	7	.719 (18.3)	.687 (17.4)	.937 (23.8)	.125 (3.2)	.105 (2.7)					
04	12	11 & 12	11	-	.812 (20.6)	.772 (19.6)	1.031 (26.2)	.125 (3.2)	.105 (2.7)					
05	-	-	-	12	.812 (20.6)	.828 (21.0)	1.114 (28.3)	.125 (3.2)	.105 (2.7)					
06	14	13 & 14	13	19	.906 (23.0)	.937 (23.8)	1.125 (28.6)	.125 (3.2)	.105 (2.7)					
07	16	15 & 16	15	27	.969 (24.6)	1.063 (27.0)	1.250 (31.8)	.125 (3.2)	.135 (3.4)					
08	18	17 & 18	17	-	1.062 (27.0)	1.187 (30.1)	1.343 (34.1)	.125 (3.2)	.135 (3.4)					
09	-	-	-	37	1.187 (30.1)	1.266 (32.2)	1.458 (37.0)	.125 (3.2)	.135 (3.4)					
10	20	19 & 20	19	-	1.156 (29.4)	1.312 (33.3)	1.467 (37.3)	.125 (3.2)	.135 (3.4)					
11	22	21 & 22	21	-	1.250 (31.8)	1.437 (36.5)	1.562 (39.7)	.125 (3.2)	.135 (3.4)					
12	24	23 & 24	23	-	1.375 (34.9)	1.562 (39.7)	1.703 (43.3)	.152 (3.9)	.135 (3.4)					
13	-	-	-	61	1.436 (36.5)	1.570 (39.9)	1.799 (45.7)	.125 (3.2)	.135 (3.4)					
14	-	25	25	-	1.500 (38.1)	1.600 (40.6)	1.812 (46.0)	.152 (3.9)	.135 (3.4)					

**TABLE II: MATERIAL**

Symbol	Material Description
<b>B</b>	Fluorosilicone with Silver Aluminum 84 Shore (Ref)
<b>C</b>	Conductive — Metex
<b>F</b>	Fluorosilicone
<b>M</b>	Conductive — Con-Sil II
<b>N</b>	Neoprene
<b>S</b>	Silicone
<b>V</b>	Viton

Metric Dimensions (mm) are indicated in parenthesis.