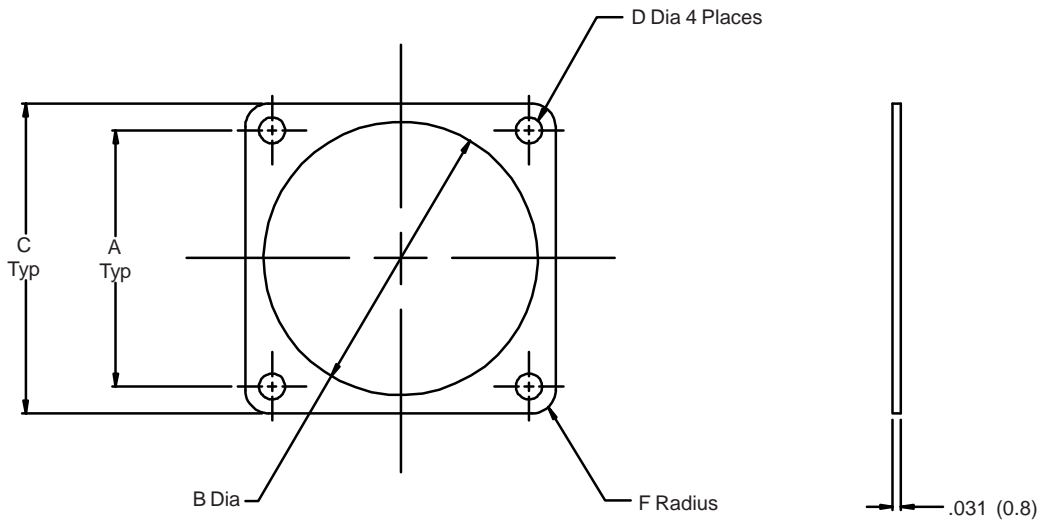


930 - 004 F 10

Product Series _____
 Basic Number _____
 Dash Number (Table I) _____
 Material Symbol (Table II) _____


NOTES:

1. Identified by bag and tag in suitable quantities.
2. Metric dimensions (mm) are indicated in parentheses.

930-004
Gasket for MIL-DTL-5015 and MIL-C-22992
Class C - J and R Receptacle Connectors



TABLE I: DASH NUMBER

Dash No.	MIL-C-22992		A		B Dia		C		D Dia		F Rad	
	MIL-DTL-5015	Class C J & R	±.010	(0.3)	+0.016 -0	(+0.4 -0)	+0.016 -0	(+0.4 -0)	±.010	(0.1)	±.010	(0.3)
1	8S	-	.594	(15.1)	.500	(12.7)	.875	(22.2)	.172	(4.4)	.141	(3.6)
2	10S & 10SL	-	.719	(18.3)	.625	(15.9)	1.000	(24.4)	.172	(4.4)	.141	(3.6)
3	12 & 12S	-	.812	(20.6)	.750	(19.1)	1.094	(27.8)	.172	(4.4)	.141	(3.6)
4	14 & 14S	12	.906	(23.0)	.875	(22.2)	1.188	(30.2)	.172	(4.4)	.141	(3.6)
5	16 & 16S	14	.969	(24.6)	1.000	(25.4)	1.281	(32.5)	.172	(4.4)	.156	(4.0)
6	18	16	1.062	(27.0)	1.125	(28.6)	1.375	(34.9)	.203	(5.2)	.156	(4.0)
7	20	18	1.156	(29.4)	1.250	(31.8)	1.500	(38.1)	.203	(5.2)	.172	(4.4)
8	22	20	1.250	(31.8)	1.375	(34.9)	1.625	(41.3)	.203	(5.2)	.188	(4.8)
9	24	22	1.375	(34.9)	1.500	(38.1)	1.750	(44.5)	.203	(5.2)	.188	(4.8)
10	28	24	1.562	(39.7)	1.750	(44.5)	2.000	(50.8)	.203	(5.2)	.219	(5.6)
11	28	-	2.188	(55.6)	1.750	(44.5)	2.688	(68.3)	.203	(5.2)	.250	(6.4)
12	32	28	1.750	(44.5)	2.000	(50.8)	2.250	(57.6)	.219	(5.6)	.250	(6.4)
13	36	32	1.938	(49.2)	2.188	(55.6)	2.500	(63.5)	.219	(5.6)	.281	(7.1)
14	40	36	1.188	(30.2)	2.438	(61.9)	2.750	(69.9)	.219	(5.6)	.281	(7.1)
15	18*	-	1.062	(27.0)	1.220	(31.0)	1.375	(34.9)	.203	(5.2)	.156	(4.0)

*Fits Amphenol GT Series

TABLE II: MATERIAL

Symbol	Material Description
C	Conductive — Metex
F	Fluorosilicone
M	Conductive — Con-Sil II
N	Neoprene
S	Silicone

Metric Dimensions (mm) are indicated in parenthesis.