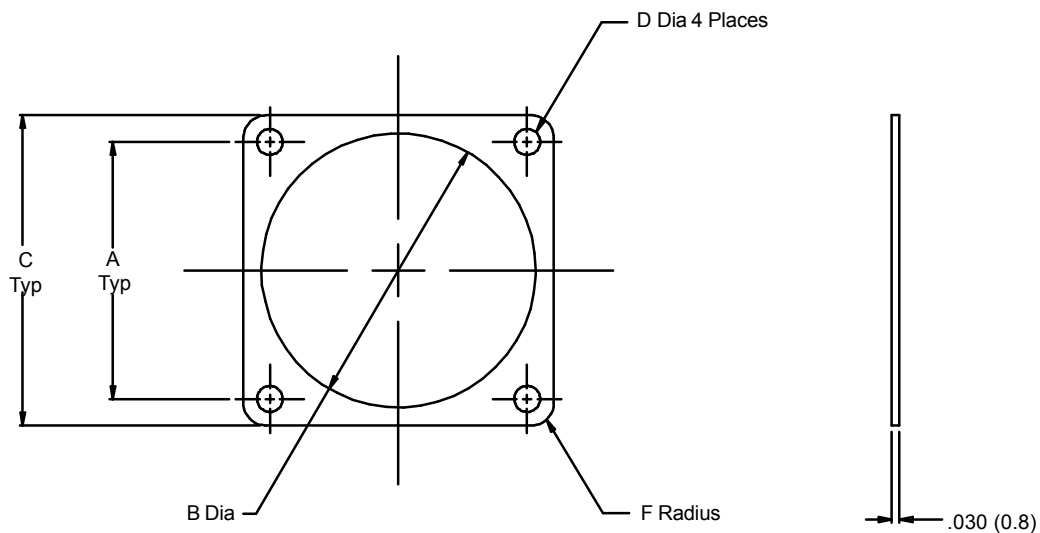


930 - 001 F 02

Product Series _____
Basic Number _____

Dash Number (Table I) _____
Material Symbol (Table II) _____

**NOTES:**

1. Identified by bag and tag in suitable quantities.
2. Metric dimensions (mm) are indicated in parentheses.

930-001
Gasket for Flange Mount
Receptacle Connector



Miscellaneous
Accessories

TABLE I: DASH NUMBER

MIL-DTL-26482, 26500, 83723 MIL-DTL-38999														
Dash	Series I & III		Series		A		B Dia		C		D Dia		F Rad	
No.	NAS1599 B&T	I & II	III & IV	AS81703	±.005	(0.1)	±.007	(0.2)	±.008	(0.2)	±.005	(0.1)	±.015	(0.4)
01	8	8	-	-	.595	(15.1)	.562	(14.3)	.812	(20.6)	.125	(3.2)	.105	(2.7)
02	-	-	-	3	.625	(15.9)	.603	(15.3)	.896	(22.8)	.125	(3.2)	.105	(2.7)
03	10	9 & 10	9	7	.719	(18.3)	.687	(17.4)	.937	(23.8)	.125	(3.2)	.105	(2.7)
04	12	11 & 12	11	-	.812	(20.6)	.772	(19.6)	1.031	(26.2)	.125	(3.2)	.105	(2.7)
05	-	-	-	12	.812	(20.6)	.828	(21.0)	1.114	(28.3)	.125	(3.2)	.105	(2.7)
06	14	13 & 14	13	19	.906	(23.0)	.937	(23.8)	1.125	(28.6)	.125	(3.2)	.105	(2.7)
07	16	15 & 16	15	27	.969	(24.6)	1.063	(27.0)	1.250	(31.8)	.125	(3.2)	.135	(3.4)
08	18	17 & 18	17	-	1.062	(27.0)	1.187	(30.1)	1.343	(34.1)	.125	(3.2)	.135	(3.4)
09	-	-	-	37	1.187	(30.1)	1.266	(32.2)	1.458	(37.0)	.125	(3.2)	.135	(3.4)
10	20	19 & 20	19	-	1.156	(29.4)	1.312	(33.3)	1.467	(37.3)	.125	(3.2)	.135	(3.4)
11	22	21 & 22	21	-	1.250	(31.8)	1.437	(36.5)	1.562	(39.7)	.125	(3.2)	.135	(3.4)
12	24	23 & 24	23	-	1.375	(34.9)	1.562	(39.7)	1.703	(43.3)	.152	(3.9)	.135	(3.4)
13	-	-	-	61	1.436	(36.5)	1.570	(39.9)	1.799	(45.7)	.125	(3.2)	.135	(3.4)
14	-	25	25	-	1.500	(38.1)	1.600	(40.6)	1.812	(46.0)	.152	(3.9)	.135	(3.4)

TABLE II: MATERIAL

Symbol	Material Description
B	Fluorosilicone with Silver Aluminum 84 Shore (Ref)
C	Conductive — Metex
F	Fluorosilicone
M	Conductive — Con-Sil II
N	Neoprene
S	Silicone
V	Viton

Metric Dimensions (mm) are indicated in parenthesis.