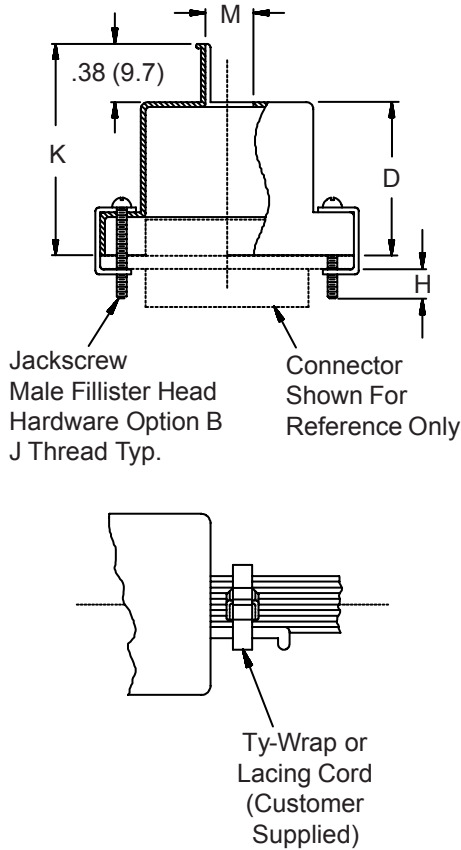
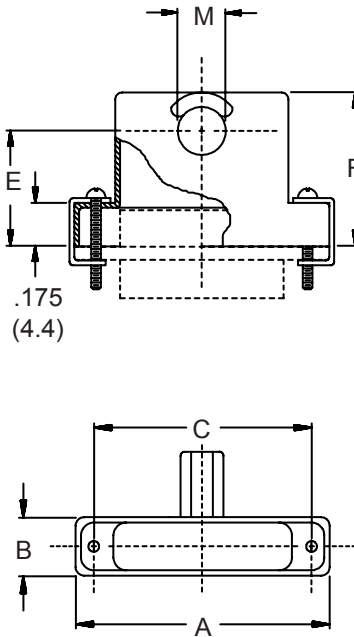


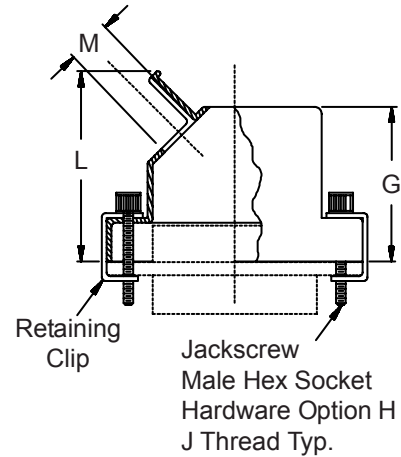
**STYLE T - TOP ENTRY**



**STYLE S - SIDE ENTRY**



**STYLE E - 45° ENTRY**



Metric dimensions (mm) are indicated in parentheses.

**HOW TO ORDER**

| Series | Cable Entry Style              | Basic Part Number | Shell Plating *                                       | Shell Size (Table I) | Hardware Options *  |
|--------|--------------------------------|-------------------|---|----------------------|---|
| 500    | T – Top<br>S – Side<br>E – 45° | 012               | C – Black Anodize                                     | 09                   | B – (2) male fillister head<br>E – (2) extended jackscrew<br>H – (2) male hex socket<br>F – (2) female jackpost |
|        |                                |                   | E – Chem. Film  | 15                   |   |
|        |                                |                   | J – Gold Iridite Over Cadmium Over Electroless Nickel | 21                   |   |
|        |                                |                   | M – Electroless Nickel                                | 25                   |   |
|        |                                |                   | NF – Cadmium, Olive Drab Over Electroless Nickel      | 31                   |   |
|        |                                |                   |   | 37                   |   |
|        |                                |                   | Z2 – Gold   | 51                   |   |
|        | 100                            |                   |   |                      |   |

**Sample Part Number:**

500 T 012 M 21 B

\* SEE PAGE C-4 FOR COMPLETE INFORMATION

Machined aluminum strain relief backshells are intended for applications where shielding is not required.

TABLE I: DIMENSIONS

| SHELL SIZE | A            | B          | C            | D          | E           | F           |
|------------|--------------|------------|--------------|------------|-------------|-------------|
| 09         | .775 (19.7)  | .36 (9.1)  | .565 (14.4)  | .32 (8.1)  | .435 (11.0) | .607 (15.4) |
| 15         | .925 (23.5)  | .36 (9.1)  | .715 (18.2)  | .44 (11.2) | .440 (11.2) | .643 (16.3) |
| 21         | 1.075 (27.3) | .36 (9.1)  | .865 (22.0)  | .56 (14.2) | .458 (11.6) | .677 (17.2) |
| 25         | 1.175 (29.8) | .36 (9.1)  | .965 (24.5)  | .62 (15.7) | .483 (12.3) | .718 (18.2) |
| 31         | 1.325 (33.7) | .36 (9.1)  | 1.115 (28.3) | .68 (17.3) | .476 (12.1) | .726 (18.4) |
| 37         | 1.475 (37.5) | .36 (9.1)  | 1.265 (32.1) | .72 (18.3) | .478 (12.2) | .744 (18.9) |
| 51         | 1.425 (36.2) | .40 (10.2) | 1.215 (30.9) | .75 (19.1) | .548 (13.9) | .829 (21.1) |
| 100        | 2.160 (54.9) | .45 (11.4) | 1.800 (45.7) | .81 (20.6) | .687 (17.4) | .984 (25.0) |

| SHELL SIZE | G            | H REF      | J THREAD   | K ±.03 (0.8) | L MAX       | M Dia ±.005 (0.1) |
|------------|--------------|------------|------------|--------------|-------------|-------------------|
| 09         | .650 (16.5)  | .154 (3.9) | 2-56 UNC-2 | .70 (17.8)   | .90 (22.9)  | .156 (4.0)        |
| 15         | .700 (17.8)  | .154 (3.9) | 2-56 UNC-2 | .82 (20.8)   | .96 (24.4)  | .188 (4.8)        |
| 21         | .735 (18.7)  | .154 (3.9) | 2-56 UNC-2 | .94 (23.9)   | .99 (25.1)  | .219 (5.6)        |
| 25         | .800 (20.3)  | .154 (3.9) | 2-56 UNC-2 | 1.00 (25.4)  | 1.05 (26.7) | .250 (6.4)        |
| 31         | .860 (21.8)  | .154 (3.9) | 2-56 UNC-2 | 1.06 (26.9)  | 1.08 (27.4) | .265 (6.7)        |
| 37         | .925 (23.5)  | .154 (3.9) | 2-56 UNC-2 | 1.10 (27.9)  | 1.12 (28.9) | .281 (7.1)        |
| 51         | .975 (24.8)  | .154 (3.9) | 2-56 UNC-2 | 1.13 (28.7)  | 1.21 (30.7) | .312 (7.9)        |
| 100        | 1.050 (26.7) | .184 (4.7) | 4-40 UNC-2 | 1.19 (30.2)  | 1.28 (32.5) | .375 (9.5)        |

Metric dimensions (mm) are indicated in parentheses.