



RJ45 AND USB 2.0

# Contacts, Tools, and Accessories



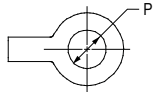
## Protective Covers, Attached to Panel for 38999 Type Receptacle Connectors

How To Order							
<b>Sample Part Number</b>	<b>660</b>	<b>-024</b>	<b>M</b>	<b>17</b>	<b>H</b>	<b>5</b>	<b>-01</b>
<b>Series</b>	660 = Series 66						
<b>Cover Type</b>	-024 = metal receptacle cover (see note 2)						
<b>Material and Finish</b>	See Material and Finish Table						
<b>Shell Size</b>	15, 17, 19						
<b>Lanyard Type</b>	D, S, F, G, H, K, R, T, U (See Lanyard Type Table)						
<b>Lanyard Length</b>	Length in inches						
<b>Ring Style Dash No.</b>	(See Table I and II) omit for "SK" slip knot attachment						

MIL-DTL-38999 Type

**Table I: Dash No. for Small Ring**

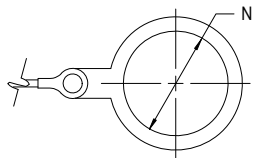
Dash No.	P	Dash No.	P
01	.140 (3.6)	06	.125 (3.2)
02	.182 (4.6)	07	.218 (5.5)
03	.191 (4.9)	09	.156 (4.0)
04	.197 (5.0)	00	no eyelet
05	.167 (4.2)	WS	with strap



For attachment to panel

**Table II: Dash No. for Solid Ring**

Dash No.	Shell Size	N
19	15	1.141 (29.0)
21	17	1.266 (32.2)
23	19	1.391 (35.3)



SOLID RING (with tab)

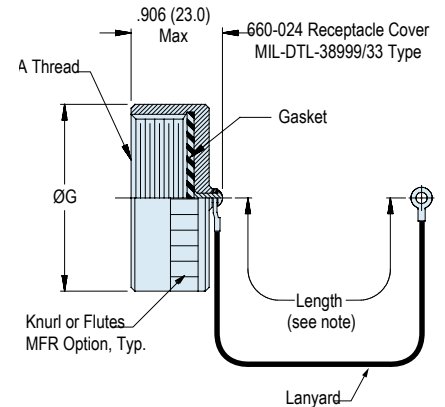
For attachment behind jam nut

**Dimensions**

Shell Size	A Thread	ØG Max
15	1.0000 - 0.1P-0.3L-TS	1.260 (32.0)
17	1.1875 - 0.1P-0.3L-TS	1.457 (37.0)
19	1.2500 - 0.1P-0.3L-TS	1.535 (39.0)

**Lanyard Type**

Sym	Attachment
E	Bead chain, cres, passivated, with terminal
E	Link chain, cres, passivated, with clevis terminal
F	Wire rope, nylon jacket w/terminal
G	Nylon rope
H	Wire rope, teflon jacket w/terminal
K	Nylon rope (olive drab color)
N	Attachment omitted
R	Wire rope, pvc jacket w/terminal
T	Wire rope, no jacket, w/terminal
S	#8 Sash chain, cres, passivate
U	Wire rope, polyurethane jacket with terminal
SK	Nylon rope (black) with slip knot



### NOTES

1. Length tolerance for Sash Chain (S) is ± 1 link, for all other attachments ± .25.
2. For plug covers contact factory
3. Material and Finish
  - Gasket: Silicone
  - Hardware, Rivet: Stainless Steel/Passivate

**Lanyard Types**

Bead Chain (Type D)	Sash Chain (Type S)	Rope (Types F, G, H, K, R, T, U)

**Materials and Finishes<sup>1</sup>**

NF	Aluminum/Cadmium, olive drab
ME	Aluminum/Electroless nickel
MT	Aluminum/ Nickel PTFE
ZR	Aluminum/ Black zinc-nickel
ZI	Stainless Steel/ Passivate

M