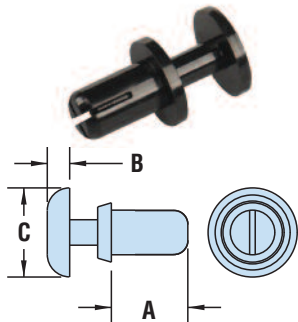


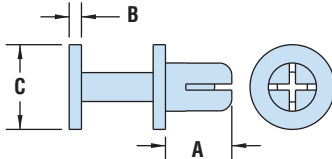


## HEYClip™ Type P Snap Rivets

Polysulfone High Temperature Snap Rivets



PRP Series Style 1



PRP Series Style 2

WILL FIT THESE PANELS		PART NO.	DESCRIPTION	PART DIMENSIONS			STYLE		
MOUNTING HOLE DIA.	ASSEMBLED PANEL THICKNESS			A Length	B Head Height	C Head Diameter			
	in.	mm.	Min.				Max.	in.	mm.

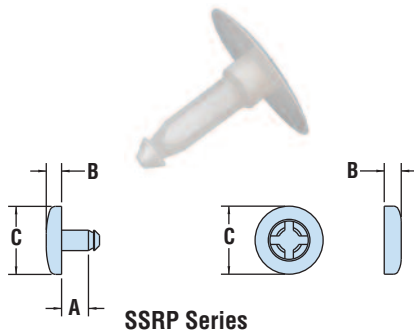
### PRP Series

.122	3,1	.078	2,0	.118	3,0	<b>9349</b>	PRP 122-079	.18	4,5	.06	1,6	.25	6,4	1
		.118	3,0	.157	4,0	<b>9350</b>	PRP 122-118	.22	5,6					
		.157	4,0	.196	5,0	<b>9351</b>	PRP 122-157	.26	6,5					
.161	4,1	.157	4,0	.197	5,0	<b>9351</b>	PRP 122-157	.26	6,5	.04	1,0	.28	7,0	2

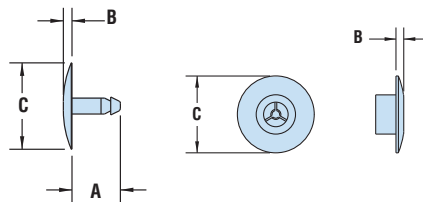
Standard color black.

## HEYClip™ Shorty Snap Rivets

Two Piece Snap Together Rivets



SSRP Series



SSRPT Series

WILL FIT THESE PANELS		PART NO.	DESCRIPTION	PART DIMENSIONS			STYLE
MOUNTING HOLE DIA.	ASSEMBLED PANEL THICKNESS			A Length	B Head Height	C Head Diameter	
	in.	mm.	in.				mm.

### SSRP Series - Pin fits a .125" (3,2 mm) diameter hole

.125	3,2	.030	0,8	<b>4064</b>	SSRP-030	.06	1,6	.09	2,3	.40	10,2	1
		.062	1,6	<b>4065</b>	SSRP-062	.10	2,4					
		.100	2,5	<b>4069</b>	SSRP-100	.13	3,4					
		.125	3,2	<b>4071</b>	SSRP-125	.16	4,0					
		.187	4,8	<b>4073</b>	SSRP-187	.22	5,6					
.250	6,4	<b>4075</b>	SSRP-250	.28	7,2							

FEMALE CAP for the above parts

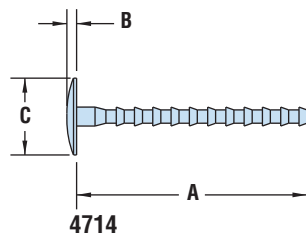
**4077** SSRC

### SSRPT Series - Cap fits a .320" (8,1 mm) diameter hole

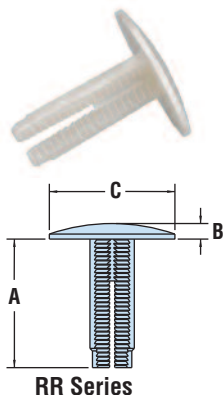
.320	8,1	.170 - .190	4,3 - 4,8	<b>4715</b>	SSRPT-190	.21	5,3	.06	1,6	.40	10,2	3
		.220 - .240	5,6 - 6,1	<b>4716</b>	SSRPT-220	.26	6,6					
		.320 - .340	8,1 - 8,6	<b>4717</b>	SSRPT-340	.35	8,9					
		.320 - .600	8,1 - 15,2	<b>4718</b>	SSRPT-600	.63	16,0					
		ADJUSTABLE		<b>4714</b>	SSRPT-ADJ	1.50	38,1	.06	1,6	.50	12,7	4
		FEMALE CAP for the above parts		<b>4719</b>	SSRCT	n/a		.06	1,6	.63	15,9	5

Standard color natural.

## HEYClip™ Ratchet Rivets



4714



RR Series

WILL FIT THESE PANELS		PART NO.	DESCRIPTION	PART DIMENSIONS					
MOUNTING HOLE DIA.	ASSEMBLED PANEL THICKNESS			A Length	B Head Height	C Head Diameter			
	in.	mm.	Min.				Max.	in.	mm.

### RR Series

.281	7,1	.235	6,0	.297	7,5	<b>12480</b>	RR 0297-41	.23	5,7	.06	1,6	.41	10,3
		.345	8,8	.500	12,7	<b>12481</b>	RR 0500-41	.34	8,7				
		.500	12,7	.813	20,7	<b>12482</b>	RR 0813-41	.49	12,4				
		.780	19,8	1.375	34,9	<b>12483</b>	RR 1375-41	.77	19,5				
		.235	6,0	.298	7,6	<b>12484</b>	RR 0298-75	.23	5,7				
		.345	8,8	.500	12,7	<b>12485</b>	RR 0500-75	.34	8,7				
		.500	12,7	.812	20,6	<b>12486</b>	RR 0812-75	.49	12,4				
		.780	19,8	1.375	34,9	<b>12487</b>	RR 1375-75	.77	19,5				

Standard color natural.

Material	Polysulfone (PSU)	Shorty Snap & Ratchet Rivet
Flammability Rating	94-HB	Nylon 6/6
Temperature Range	32°F (0°C) to 302°F (150°C)	94 V-2
		32°F (0°C) to 185°F (85°C)