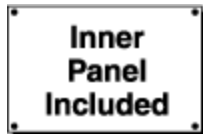




Quality Products. Service Excellence.

Type 12 Mild Steel Wallmount Enclosure 1418 Series

Continuous Hinge Door with Clamps



Application

- Designed to house electrical, electronic, hydraulic or pneumatic controls and instruments.
- Provides a degree of protection from falling dirt, dust, oil and water.

Standards

- UL 508A Type 12 and 13
- CSA Type 12 and 13
- Complies with
 - NEMA Type 12 and 13
 - JIC EGP-1-1967 unless marked¹
 - IEC 60529, IP54

Construction

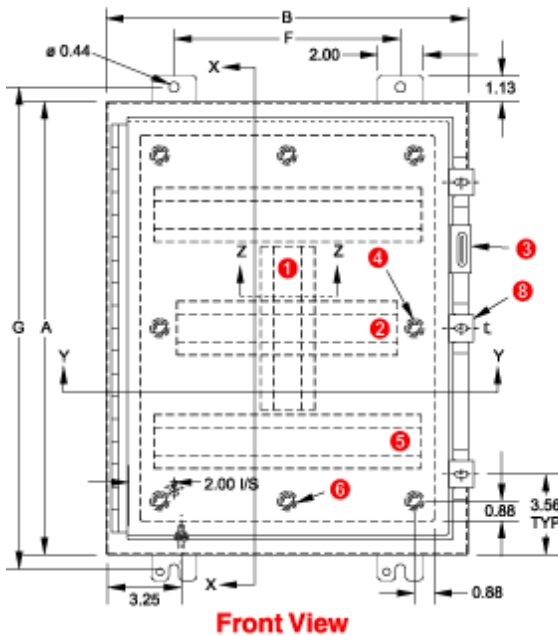
- Formed 14 gauge steel bodies and doors.
- Smooth, continuously welded seams without knockouts, cutouts or holes.
- Door and body stiffeners are provided in the larger enclosures for extra rigidity. Welded brackets provide for enclosure mounting.
- Formed lip on door and enclosure exclude flowing liquids and contaminants.
- Continuously hinged door may be removed by pulling the hinge pin.
- Door is secured with easily operated stainless steel clamps.
- Provision for padlocking.
- Oil resistant gaskets are permanently secured.
- A removable 12 gauge inner panel is included.
- Collar studs are provided for mounting inner panels.
- A bonding stud is provided on the door and a grounding stud is provided in the enclosure
- A literature pocket is provided for the inside of the door.

Finish

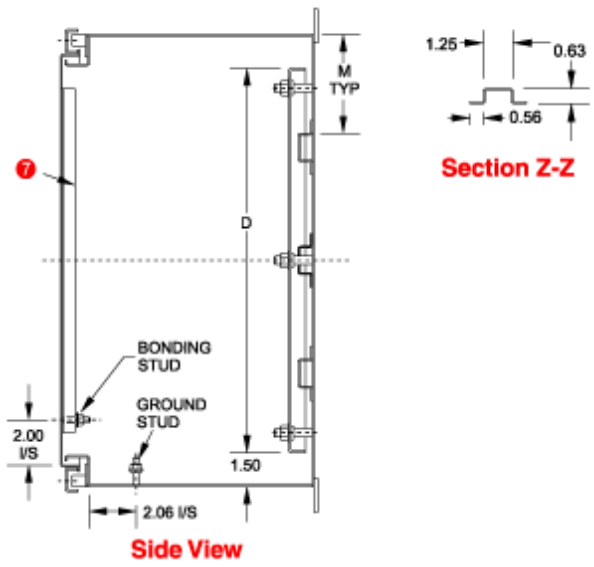
- Cover and enclosure are finished in recoatable smooth ANSI 61 gray powder coating on the outside, with white powder coating on the inside.
- Removable inner panel is finished in white powder coating.

Accessories

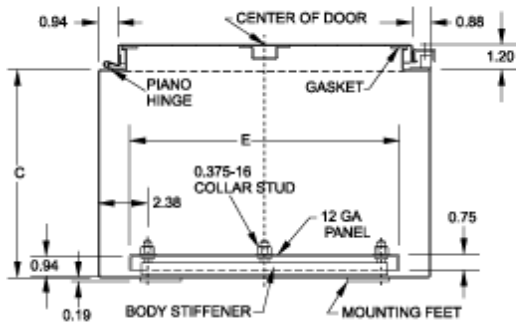
- Inner Panels
- Blowers and Fans
- Door Clamping Hardware
- Drip Shield Kit
- Filtered Fans
- Gland Plates
- Lock kit
- Wallmount Quick Release Clamp
- Terminal Kits
- Window Kits
- Cooling Products
- Ventilation
- Door Stop Kit
- Enclosure Stabilizers
- Floor Stand Kit
- Heaters
- Type 1 Louvered Ventilating Plates
- Swing Panel Kit
- Temperature Controls
- Ground Wire Kits



Front View



Side View



Bottom View

- ❶ Vertical stiffener required on KK, M, MR and LL only.
- ❷ Omit center body stiffener if A is less than 41".
- ❸ Padlocking hasp and staple.
- ❹ Omit 2 middle studs if A is less than 31".
- ❺ Omit body stiffeners if A or B is less than 29".
- ❻ Omit 2 middle studs if B is less than 31".
- ❼ Omit door stiffener if A or B is less than 31" except if Ax B is 42"x30", 48"x30" or 72"x30".
- ❽ Omit if A is less than 48".

Part No.	Panel Size			Centers			
	A	B	C	D	E	F	G
1418A6	12.00	24.00	6.00	9.00	21.00	18.00	13.25
1418B6	16.00	12.00	6.00	13.00	9.00	9.50	17.25
1418G6	16.00	16.00	6.00	13.00	13.00	10.00	17.25
1418CR6	16.00	20.00	6.00	13.00	17.00	14.00	17.25
1418CA6	20.00	12.00	6.00	17.00	9.00	9.50	21.25
1418C6	20.00	16.00	6.00	17.00	13.00	10.00	21.25
1418D6	20.00	20.00	6.00	17.00	17.00	14.00	21.25
1418ER6	20.00	24.00	6.00	17.00	21.00	18.00	21.25
1418AR6	24.00	12.00	6.00	21.00	9.00	9.50	25.25
1418H6	24.00	16.00	6.00	21.00	13.00	10.00	25.25
1418E6	24.00	20.00	6.00	21.00	17.00	14.00	25.25
1418J6	24.00	24.00	6.00	21.00	21.00	18.00	25.25
1418FG6	30.00	16.00	6.00	27.00	13.00	10.00	31.25
1418F6	30.00	20.00	6.00	27.00	17.00	14.00	31.25
1418K6	30.00	24.00	6.00	27.00	21.00	18.00	31.25
1418L6	36.00	24.00	6.00	33.00	21.00	18.00	37.25
1418M6	36.00	30.00	6.00	33.00	27.00	24.00	37.25
1418A8	12.00	24.00	8.00	9.00	21.00	18.00	13.25
1418B8	16.00	12.00	8.00	13.00	9.00	9.50	17.25
1418G8	16.00	16.00	8.00	13.00	13.00	10.00	17.25
1418CR8	16.00	20.00	8.00	13.00	17.00	14.00	17.25
1418CA8	20.00	12.00	8.00	17.00	9.00	9.50	21.25
1418C8	20.00	16.00	8.00	17.00	13.00	10.00	21.25
1418D8	20.00	20.00	8.00	17.00	17.00	14.00	21.25
1418ER8	20.00	24.00	8.00	17.00	21.00	18.00	21.25

Part No.	Panel Size					Centers	
	A	B	C	D	E	F	G
1418AR8	24.00	12.00	8.00	21.00	9.00	9.50	25.25
1418H8	24.00	16.00	8.00	21.00	13.00	10.00	25.25
1418E8	24.00	20.00	8.00	21.00	17.00	14.00	25.25
1418J8	24.00	24.00	8.00	21.00	21.00	18.00	25.25
1418KR8	24.00	30.00	8.00	21.00	27.00	24.00	25.25
1418KA8	30.00	12.00	8.00	27.00	9.00	9.50	31.25
1418KG8	30.00	16.00	8.00	27.00	13.00	10.00	31.25
1418F8	30.00	20.00	8.00	27.00	17.00	14.00	31.25
1418K8	30.00	24.00	8.00	27.00	21.00	18.00	31.25
1418KK8	30.00	30.00	8.00	27.00	27.00	24.00	31.25
1418MR8	30.00	36.00	8.00	27.00	33.00	30.00	31.25
1418L8	36.00	24.00	8.00	33.00	21.00	18.00	37.25
1418M8	36.00	30.00	8.00	33.00	27.00	24.00	37.25
1418LL8 ¹	36.00	36.00	8.00	33.00	33.00	30.00	37.25
1418N8	42.00	24.00	8.00	39.00	21.00	18.00	43.25
1418O8 ¹	42.00	30.00	8.00	39.00	27.00	24.00	43.25
1418P8 ¹	42.00	36.00	8.00	39.00	33.00	30.00	43.25
1418Q8	48.00	24.00	8.00	45.00	21.00	18.00	49.25
1418R8 ¹	48.00	30.00	8.00	45.00	27.00	24.00	49.25
1418S8 ¹	48.00	36.00	8.00	45.00	33.00	30.00	49.25
1418T8 ¹	60.00	36.00	8.00	57.00	33.00	30.00	61.25
1418B10	16.00	12.00	10.00	13.00	9.00	9.50	17.25
1418C10	20.00	16.00	10.00	17.00	13.00	10.00	21.25
1418D10	20.00	20.00	10.00	17.00	17.00	14.00	21.25
1418AR10	24.00	12.00	10.00	21.00	9.00	9.50	25.25
1418E10	24.00	20.00	10.00	21.00	17.00	14.00	25.25
1418J10	24.00	24.00	10.00	21.00	21.00	18.00	25.25
1418F10	30.00	20.00	10.00	27.00	17.00	14.00	31.25
1418K10	30.00	24.00	10.00	27.00	21.00	18.00	31.25
1418L10	36.00	24.00	10.00	33.00	21.00	18.00	37.25
1418M10	36.00	30.00	10.00	33.00	27.00	24.00	37.25
1418O10 ¹	42.00	30.00	10.00	39.00	27.00	24.00	43.25
1418P10 ¹	42.00	36.00	10.00	39.00	33.00	30.00	43.25
1418R10 ¹	48.00	30.00	10.00	45.00	27.00	24.00	49.25
1418S10 ¹	48.00	36.00	10.00	45.00	33.00	30.00	49.25
1418T10 ¹	60.00	36.00	10.00	57.00	33.00	30.00	61.25
1418C12	20.00	16.00	12.00	17.00	13.00	10.00	21.25
1418E12	24.00	20.00	12.00	21.00	17.00	14.00	25.25
1418J12	24.00	24.00	12.00	21.00	21.00	18.00	25.25
1418K12	30.00	24.00	12.00	27.00	21.00	18.00	31.25
1418KK12	30.00	30.00	12.00	27.00	27.00	24.00	31.25
1418L12	36.00	24.00	12.00	33.00	21.00	18.00	37.25
1418M12	36.00	30.00	12.00	33.00	27.00	24.00	37.25
1418LL12 ¹	36.00	36.00	12.00	33.00	33.00	30.00	37.25
1418O12 ¹	42.00	30.00	12.00	39.00	27.00	24.00	43.25
1418P12 ¹	42.00	36.00	12.00	39.00	33.00	30.00	43.25
1418S12 ¹	48.00	36.00	12.00	45.00	33.00	30.00	49.25
1418T12 ¹	60.00	36.00	12.00	57.00	33.00	30.00	61.25
1418U12 ¹	72.00	30.00	12.00	69.00	27.00	24.00	73.25
1418V12	72.00	36.00	12.00	69.00	33.00	30.00	73.25
1418E16	24.00	20.00	16.00	21.00	17.00	14.00	25.25
1418J16	24.00	24.00	16.00	21.00	21.00	18.00	25.25
1418K16	30.00	24.00	16.00	27.00	21.00	18.00	31.25
1418M16	36.00	30.00	16.00	33.00	27.00	24.00	37.25
1418P16 ¹	42.00	36.00	16.00	39.00	33.00	30.00	43.25
1418S16 ¹	48.00	36.00	16.00	45.00	33.00	30.00	49.25

Part No.	Panel Size					Centers	
	A	B	C	D	E	F	G
1418T16 ¹	60.00	36.00	16.00	57.00	33.00	30.00	61.25
1418U16 ¹	72.00	30.00	16.00	69.00	27.00	24.00	73.25
1418K20	30.00	24.00	20.00	27.00	21.00	18.00	31.25
1418M20	36.00	30.00	20.00	33.00	27.00	24.00	37.25
1418S20 ¹	48.00	36.00	20.00	45.00	33.00	30.00	49.25
1418T20 ¹	60.00	36.00	20.00	57.00	33.00	30.00	61.25
1418U20 ¹	72.00	30.00	20.00	69.00	27.00	24.00	73.25
1418K24	30.00	24.00	24.00	27.00	21.00	18.00	31.25
1418U24 ¹	72.00	30.00	24.00	69.00	27.00	24.00	73.25

¹ Does not meet JIC requirements

Data subject to change without notice

© 2017. Hammond Manufacturing Ltd. All rights reserved.