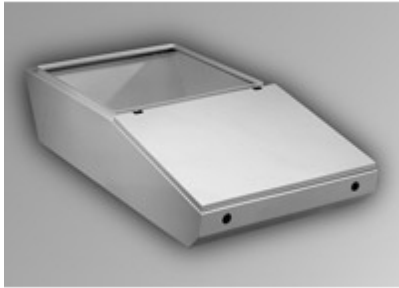




Quality Products. Service Excellence.

Type 4, 4X Mild Steel and Stainless Steel Desk Units *Series 2000*

Modular Console System



Application

- Generally used in combination with other modular console components (ie. base, pedestal, and/or turret).
- Provides an ideal sloped surface for mounting keyboards, switches, indicator lights, and/or dials.
- Open top permits mounting of a turret (usually for CRT applications) or an optional hinged desk cover (providing a flat, sturdy desk surface).
- Available in either Standard (will support Standard Turret only) or Deep (will support Deep Turret only) format.
- Smooth lines and clean edges provide an attractive, contemporary appearance.



Standards

- UL 508A Type 3R, 4,12
- CSA Type 3R, 4, 12, 13
- EIA RS-310-D
- Complies with
 - NEMA Type 3R, 4, 12
 - IEC 60529, IP66

Construction

- UL 508 Type 3R, 4, 4X, 12
- CSA Type 3R, 4, 4X, 12
- Complies with
 - NEMA Type 3R, 4, 4X, 12
 - IEC 60529, IP66

Finish

- Formed 14 gauge steel bodies with 14 gauge steel lid.
- Also offered with formed 14 gauge 304 stainless steel bodies with 14 gauge 304 stainless steel lid.
- Smooth, continuously welded seams without knockouts or holes.
- Body stiffeners are provided where required for increased strength and rigidity.
- Offered in 4 widths 24", 36", 48" and 60".
- Solid sides and back, lid on sloped top area, open on flat top area, bottom is solid under lid area and open under flat top area.
- Deep Desk has a 6.7" deeper top opening than standard desk allowing for support of Deep Turret - see drawings as Deep Desk has different profile (angled back) from Standard Desk (flat back.)
- Lid profiles provide increased strength.
- Formed lip on enclosure excludes flowing liquids and contaminants.
- Slotted quarter turn oil-tight latches secure the lid, with optional tamper resistant and locking latches available.
- Stainless steel models utilize stainless steel hardware.
- Oil resistant gaskets are permanently secured.



- Features several internal stud locations for mounting Desk Inner Panel.
- A bonding screw is provided on the lid and a grounding stud is provided in the enclosure.

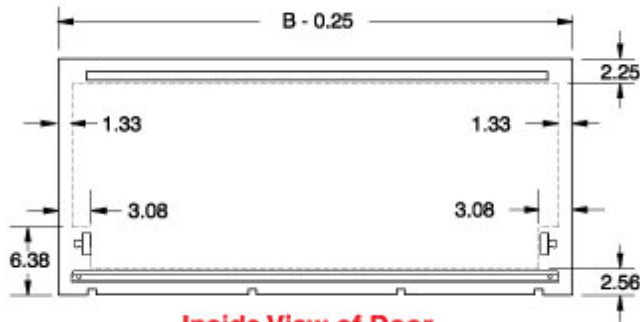
Accessories

- Available in RAL 7035 light gray textured powder coating and natural stainless steel with a smooth, brushed finish.
- Desk covers available in same finishes.

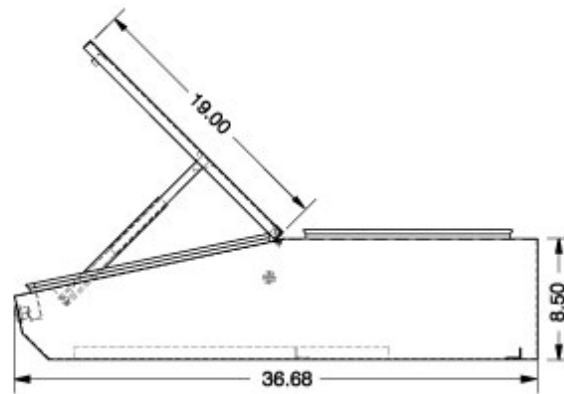
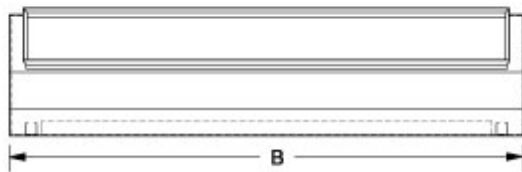
Accessories

- Desk Cover
- Desk Inner Panel
- Ground Wire Kits

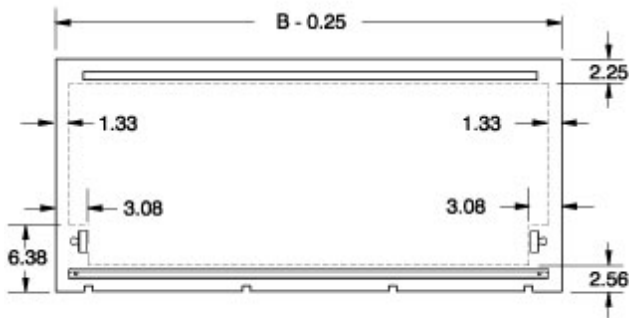
Standard Desk Unit



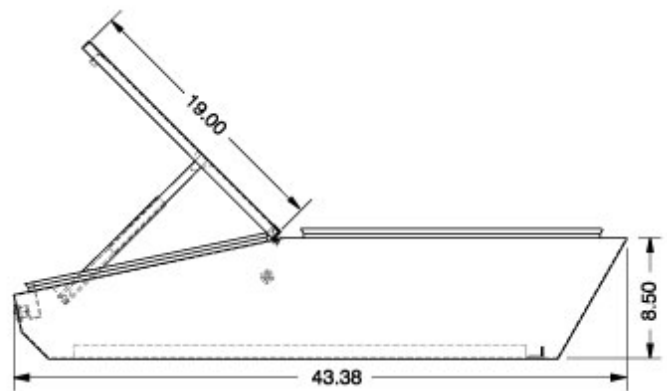
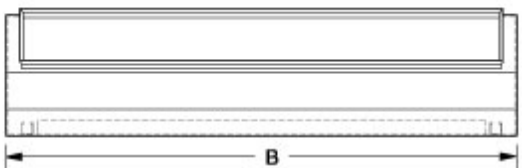
Inside View of Door
Clearance area for mounting hardware on desk unit sloping door



Deep Desk Unit



Inside View of Door
Clearance area for mounting hardware on desk unit sloping door



RAL 7035 Light Gray		Stainless Steel	
Part No.	Part No.	B	
2CLD82436	2CSD82436	24.00	
2CLD83636	2CSD83636	36.00	
2CLD84836	2CSD84836	48.00	
2CLD86036	2CSD86036	60.00	

RAL 7035 Light Gray		Stainless Steel	
Part No.	Part No.	B	
2CLD82443	2CSD82443	24.00	
2CLD83643	2CSD83643	36.00	
2CLD84843	2CSD84843	48.00	
2CLD86043	2CSD86043	60.00	

Data subject to change without notice

© 2017. Hammond Manufacturing Ltd. All rights reserved.