

# Customer Information Sheet

DRAWING No.: M30-610XX46 SHEET 2 OF 2

IF IN DOUBT - ASK



NOT TO SCALE

THIRD ANGLE PROJECTION

ALL DIMENSIONS IN mm

**SPECIFICATION:**

**MATERIAL:**  
 MOULDING = NYLON 66, UL94V-0, NATURAL  
 CONTACTS = BRASS

**FINISH:**  
 CONTACTS = 2.03µ - 2.54µ 100% TIN  
 OVER 0.76µ NICKEL

**ELECTRICAL:**  
 CURRENT RATING = 1A AC/DC  
 VOLTAGE RATING = 150V AC/DC  
 CONTACT RESISTANCE = 30mΩ MAX  
 INSULATION RESISTANCE = 500MΩ MIN  
 DIELECTRIC WITHSTANDING VOLTAGE = 500V AC  
 FOR ONE MINUTE

**ENVIRONMENTAL:**  
 TEMPERATURE RANGE = -25°C TO +85°C

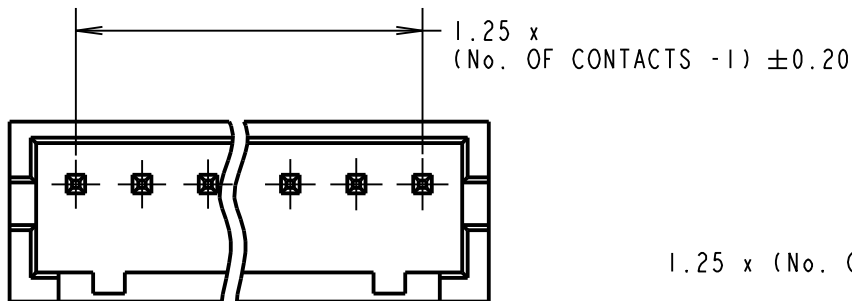
**PACKING:**  
 02 CONTACTS = BOX  
 03 - 15 CONTACTS = TUBE  
 FOR COMPLETE SPECIFICATION, SEE COMPONENT  
 SPECIFICATION C025XX (LATEST ISSUE)

ORDER CODE:

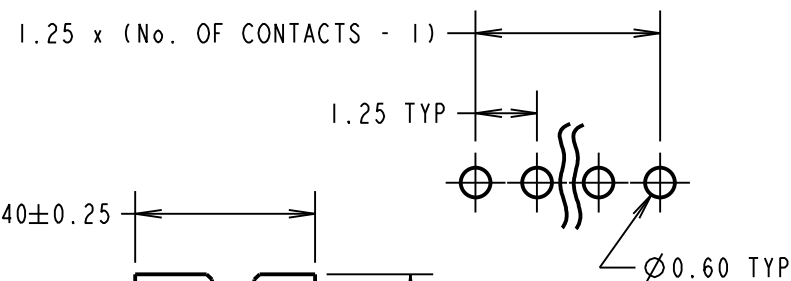
**M30-610XX46**

No. OF CONTACTS \_\_\_\_\_  
 02 TO 15

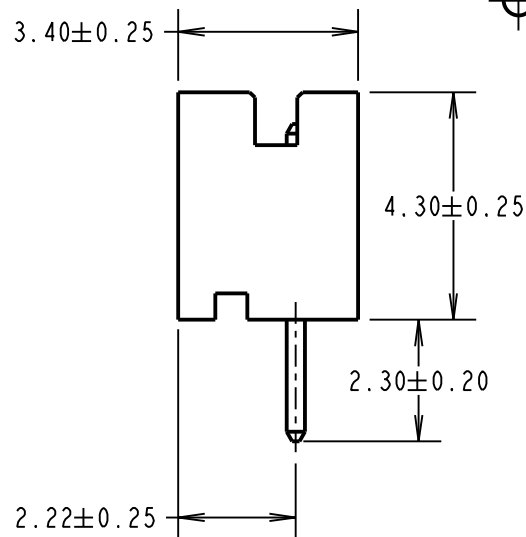
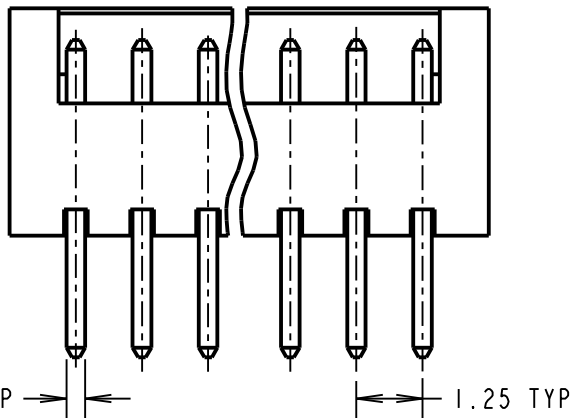
FINISH: \_\_\_\_\_  
 46 = 100% TIN



RECOMMENDED PCB LAYOUT  
 (TOLERANCE ±0.05)



(1.25 x No. OF CONTACTS)  
 + 1.25 ±0.25



MSP	10	07.10.15	13098
NAME	ISS.	DATE	C/NOTE
APPROVED:		M. PERREN	
CHECKED:		S. BENNETT	
DRAWN:		W. BOURNE	
CUSTOMER REF.:			
ASSEMBLY DRG:			

**NOTES:**  
 1. MATES WITH M30-1050046 AND M30-1060046 CRIMP CONTACTS,  
 WITH M30-110XX00 CRIMP MOULDING.

**HARWIN**

www.harwin.com  
 technical@harwin.com

THIS DRAWING AND ANY  
 INFORMATION OR DESCRIPTIVE  
 MATTER SET OUT HEREON ARE  
 CONFIDENTIAL AND COPYRIGHT  
 PROPERTY OF THE HARWIN  
 GROUP AND MUST NOT BE  
 DISCLOSED, LOANED, COPIED  
 OR USED FOR MANUFACTURING,  
 TENDERING OR FOR ANY  
 OTHER PURPOSE WITHOUT  
 THEIR WRITTEN PERMISSION.

**TOLERANCES**  
 X. = ±1mm  
 X.X = ±0.50mm  
 X.XX = ±0.10mm  
 X.XXX = ±0.01mm  
 ANGLES = ±5°  
 UNLESS STATED

**MATERIAL:**  
 SEE ABOVE  
**FINISH:** SEE ABOVE  
**S/AREA:** mm<sup>2</sup>

**TITLE:**  
 1.25mm PITCH SIL PC TAIL  
 BOARD MOUNT CONNECTOR  
**DRAWING NUMBER:**  
**M30-610XX46**

SHT  
 2 OF 2