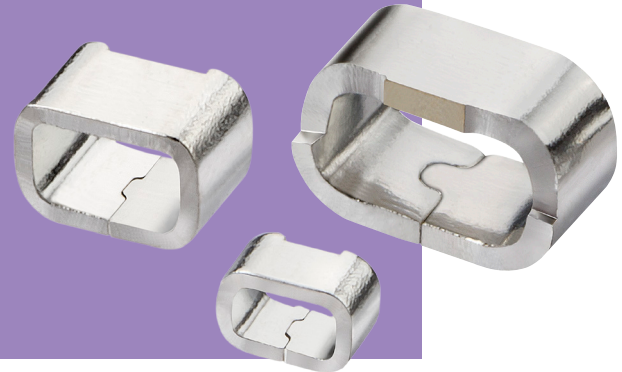


SMT Test Point

- ❖ Ideal for use with standard probes, clips and hooks.
- ❖ Can be placed using industry standard equipment.
- ❖ Suitable for automatic or manual test.
- ❖ High speed placement.
- ❖ Industry standard Tape & Reel packaging.
- ❖ Strong and durable.



SPECIFICATION		2.00mm HIGH									
<p>Materials</p> <p>Material: Copper Alloy Finish: Tin</p> <p>Packaging</p> <p>Format: Tape & Reel or Loose Reel quantity: S1751: 2,500 on a Ø330mm reel S2751: 2,500 on a Ø178mm reel S2761: 3,000 on a Ø178mm reel</p>		<table border="1"> <thead> <tr> <th>ORDER CODE</th> <th>PACKAGING</th> </tr> </thead> <tbody> <tr> <td>S1751-46R</td> <td>Tape & Reeled </td> </tr> <tr> <td>S1751-46</td> <td>Loose </td> </tr> </tbody> </table> <p>Recommended PC Board Pattern</p>		ORDER CODE	PACKAGING	S1751-46R	Tape & Reeled	S1751-46	Loose		
ORDER CODE	PACKAGING										
S1751-46R	Tape & Reeled										
S1751-46	Loose										
<p>1.40mm HIGH</p> <table border="1"> <thead> <tr> <th>ORDER CODE</th> <th>PACKAGING</th> </tr> </thead> <tbody> <tr> <td>S2751-46R</td> <td>Tape & Reeled </td> </tr> </tbody> </table> <p>Recommended PC Board Pattern</p>		ORDER CODE	PACKAGING	S2751-46R	Tape & Reeled	<p>1.15mm HIGH</p> <table border="1"> <thead> <tr> <th>ORDER CODE</th> <th>PACKAGING</th> </tr> </thead> <tbody> <tr> <td>S2761-46R</td> <td>Tape & Reeled </td> </tr> </tbody> </table> <p>Recommended PC Board Pattern</p>		ORDER CODE	PACKAGING	S2761-46R	Tape & Reeled
ORDER CODE	PACKAGING										
S2751-46R	Tape & Reeled										
ORDER CODE	PACKAGING										
S2761-46R	Tape & Reeled										

All dimensions in mm.