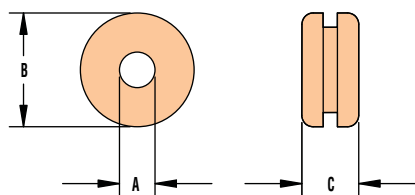




## Heyco® Rubber Grommets

For Panels .125" (3,2 mm) to .188" (4,8 mm) Thick

- **Used to protect through holes.** Help eliminate sharp edges so your wires are protected and add aesthetic value to your application.
- 113 sizes available that will accommodate mounting holes ranging from .250" (6,4 mm) to holes as large as 2.375" (60,3 mm) diameter and panel thicknesses from .063" (1,6 mm) to .188" (4,8 mm).
- Rubber grommets are constructed of SBR (unless otherwise noted) with an operating temperature range of -40°F (-40°C) to 221°F (105°C).
- SBR grommets have good water resistant characteristics and are suitable for most moderate chemicals and wet or dry organic acids.
- Provide vibration dampening.



MOUNTING HOLE DIAMETER		PART NO. Black	DESCRIPTION	MATERIAL	PART DIMENSIONS					
in.	mm.				A Inside Diameter	B Head Diameter		C Overall Height		
					in.	mm.	in.	mm.	in.	mm.
For .125" (3,2 mm) Thick Panels (continued)										
1.375	34,9	<b>G1322</b>	RG 1375-32-4	SBR	1.00	25,4	1.75	44,5	.50	12,7
1.500	38,1	<b>G1350</b>	RG 1500-40-4	SBR	1.25	31,8	1.88	47,6	.41	10,3
1.625	41,3	<b>G1363</b>	RG 1625-42-4	SBR	1.31	33,4	2.00	50,8	.44	11,1
		<b>G1364</b>	RG 1625-44-4	SBR	1.38	34,9	1.88	47,6	.41	10,3
1.750	44,5	<b>G1371</b>	RG 1750-48-4	SBR	1.50	38,1	2.13	54,0	.50	12,7
2.000	50,8	<b>G1392</b>	RG 2000-56-4	SBR	1.75	44,5	2.38	60,3	.38	9,5
2.500	63,5	<b>G1423</b>	RG 2.5-68-4	SBR	2.13	54,0	2.88	73,0	.44	11,1
For .156" (4,0 mm) Thick Panels										
.500	12,7	<b>G1094</b>	RG 500-12-5	SBR	.38	9,5	.69	17,5	.31	8,0
.750	19,1	<b>G1181</b>	RG 750-16-5	SBR	.50	12,7	.94	23,8	.41	10,3
1.500	38,1	<b>G1348</b>	RG 1500-38-5	SBR	1.19	30,2	1.75	44,5		
For .188" (4,8 mm) Thick Panels										
.312	7,9	<b>G1022</b>	RG 312-6-6	SBR	.19	4,8	.44	11,8	.31	8,0
.375	9,5	<b>G1034</b>	RG 375-6-6	SBR	.19	4,8	.63	15,9	.38	9,5
.437	11,1	<b>G1057</b>	RG 437-8-6	SBR	.25	6,4	.63	15,9	.31	8,0
.562	14,3	<b>G1110</b>	RG 562-6-6	Nitrile	.19	4,8	.75	19,1	.31	8,0
		<b>G1115</b>	RG 562-10-6	SBR	.31	8,0	.81	20,7	.38	9,5
		<b>G1116</b>	RG 562-10-6A	SBR	.31	8,0	.81	20,7	.44	11,1
		<b>G1120</b>	RG 562-12-6	SBR	.38	9,5	.81	20,7	.38	9,5
.625	15,9	<b>G1133</b>	RG 625-12-6	SBR	.38	9,5	.88	22,2	.44	11,1
		<b>G1135</b>	RG 625-13-6	Nitrile	.40	10,2	1.10	27,9		
.687	17,5	<b>G1153</b>	RG 687-14-6	SBR	.44	11,1	.94	23,8	.44	11,1
.750	19,1	<b>G1172</b>	RG 750-10-6	SBR	.31	8,0	1.00	25,4		
.812	20,6	<b>G1194</b>	RG 812-16-6	SBR	.50	12,7	1.06	27,0		
		<b>G1199</b>	RG 812-18-6	SBR	.56	14,3	1.06	27,0		
.875	22,2	<b>G1213</b>	RG 875-18-6	SBR	.56	14,3	1.06	27,0	.50	12,7
		<b>G1219</b>	RG 875-20-6	SBR	.63	15,9	1.13	28,6		
1.000	25,4	<b>G1256</b>	RG 1000-22-6	SBR	.69	17,5	1.31	33,4	.56	14,3
		<b>G1261</b>	RG 1000-24-6	SBR	.75	19,1	1.25	31,8	.56	14,3
1.062	27,0	<b>G1272</b>	RG 1062-24-6	SBR	.75	19,1	1.38	34,9	.50	12,7
1.250	31,8	<b>G1306</b>	RG 1250-28-6	SBR	.88	22,2	1.63	41,3	.56	14,3
		<b>G1312</b>	RG 1250-32-6	SBR	1.00	25,4	1.50	38,1	.44	11,1
1.375	34,9	<b>G1323</b>	RG 1375-32-6	SBR	1.00	25,4	1.75	44,5	.56	14,3
		<b>G1329</b>	RG 1375-36-6	SBR	1.13	28,6	1.88	47,6	.50	12,7
1.500	38,1	<b>G1351</b>	RG 1500-40-6	EPDM	1.25	31,8	2.00	50,8	.63	15,9
1.750	44,5	<b>G1372</b>	RG 1750-48-6	SBR	1.50	38,1	2.13	54,0	.56	14,3
2.000	50,8	<b>G1390</b>	RG 2000-52-6	SBR	1.63	41,3	2.25	57,2	.75	19,1
2.200	55,9	<b>G1404</b>	RG 2.200-64-6	SBR	2.00	50,8	2.75	69,9	.56	14,2
2.375	60,3	<b>G1414</b>	RG 2.375-64-6	PVC	2.00	50,8	2.75	69,9		

Standard color black.

Quick Specs

Material  
Temperature Range

SBR, Nitrile, EPDM, or PVC  
-40°F (-40°C) to 221°F (105°C)