

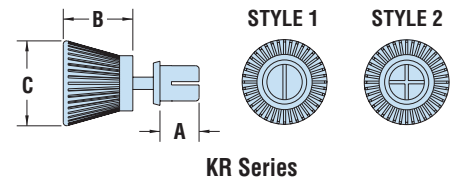


## HEYClip™ Releasable Type T Rivets

WILL FIT THESE PANELS					PART NO.		DESCRIPTION	PART DIMENSIONS						STYLE	
MOUNTING HOLE DIA.	ASSEMBLED PANEL THICKNESS				Black	White		A		B		C			
	in.	mm.	Min.	Max.				Length	Head Height	Head Diameter	in.	mm.	in.		mm.
<b>KR Series</b>															
.122	3,1	.04	1,0	.08	2,0	<b>9088</b>	<b>9089</b>	KR 122-039	.14	3,5					1
		.08	2,0	.12	3,0	<b>9090</b>	<b>9091</b>	KR 122-079	.18	4,5					
		.12	3,0	.16	4,0	<b>9092</b>	<b>9093</b>	KR 122-118	.22	5,5					
		.16	4,0	.20	5,0	<b>9094</b>	<b>9095</b>	KR 122-157	.26	6,5	.32	8,0	.39	10,0	
		.20	5,0	.24	6,0	<b>9194</b>	<b>9195</b>	KR 122-197	.30	7,5					
		.22	5,5	.26	6,5	<b>9096</b>	<b>9097</b>	KR 122-217	.32	8,0					
.142	3,6	.04	1,0	.08	2,0	<b>9098</b>	<b>9099</b>	KR 142-039	.14	3,5					2
		.08	2,0	.12	3,0	<b>9100</b>	<b>9101</b>	KR 142-079	.18	4,5					
		.12	3,0	.16	4,0	<b>9102</b>	<b>9103</b>	KR 142-118	.22	5,5					
		.14	3,5	.18	4,5	<b>9104</b>	<b>9105</b>	KR 142-137	.24	6,0	.32	8,0	.39	10,0	
		.18	4,5	.22	5,5	<b>9106</b>	<b>9107</b>	KR 142-177	.28	7,0					
		.22	5,5	.26	6,5	<b>9196</b>	<b>9197</b>	KR 142-217	.32	8,0					
.161	4,1	.10	2,5	.14	3,5	<b>9108</b>	<b>9109</b>	KR 161-098	.20	5,0					2
		.14	3,5	.18	4,5	<b>9110</b>	<b>9111</b>	KR 161-137	.24	6,0					
		.18	4,5	.22	5,5	<b>9112</b>	<b>9113</b>	KR 161-177	.28	7,0					
		.22	5,5	.26	6,5	<b>9114</b>	<b>9115</b>	KR 161-217	.32	8,0	.32	8,0	.47	12,0	
		.26	6,5	.30	7,5	<b>9198</b>	<b>9199</b>	KR 161-256	.35	9,0					
		.30	7,5	.34	8,5	<b>9116</b>	<b>9117</b>	KR 161-295	.39	10,0					

Standard colors black and white.

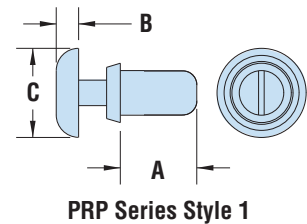
- The “T” style rivet is designed with a **large finger grip**, knob-shaped head for optimal installation and removal by simply pushing or pulling the rivet from the hole.
- Can be used multiple times.
- Part Description Key: KR X-Y where X = Mounting Hole Diameter (inches) and Y = minimum Panel Thickness (inches).
- Standard Material: Nylon 6. Nylon 6/6 UL 94V-0 available by special order, consult Heyco.
- Standard Pack - 1,000/bag.



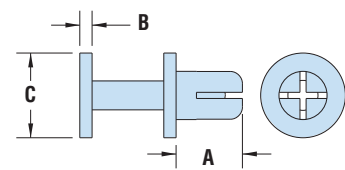
## HEYClip™ Type P Snap Rivets Polysulfone High Temperature Snap Rivets

WILL FIT THESE PANELS					PART NO.		DESCRIPTION	PART DIMENSIONS						STYLE
MOUNTING HOLE DIA.	ASSEMBLED PANEL THICKNESS				Black			A		B		C		
	in.	mm.	Min.	Max.				Length	Head Height	Head Diameter	in.	mm.	in.	
<b>PRP Series</b>														
.122	3,1	.078	2,0	.118	3,0	<b>9349</b>	PRP 122-079	.18	4,5	.06	1,6	.25	6,4	1
		.118	3,0	.157	4,0	<b>9350</b>	PRP 122-118	.22	5,6					
.161	4,1	.157	4,0	.197	5,0	<b>9351</b>	PRP 122-157	.26	6,5	.04	1,0	.28	7,0	2

Standard color black.



PRP Series Style 1



PRP Series Style 2

	KR	PRP
Material	Nylon 6	Polysulfone (PSU)
Flammability Rating	94V-2	94-HB
Temperature Range	-4°F (-18°C) to 185°F (85°C)	32°F (0°C) to 302°F (150°C)

Quick Specs