

“Stay Connected with” HEYware

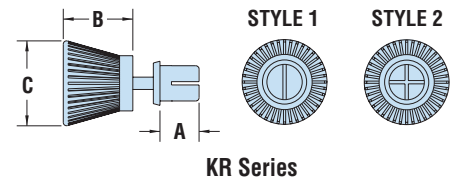


HEYClip™ Releasable Type T Rivets

WILL FIT THESE PANELS					PART NO.		DESCRIPTION	PART DIMENSIONS						STYLE		
MOUNTING HOLE DIA.	ASSEMBLED PANEL THICKNESS				Black	White		A		B		C				
	in.	mm.	Min.	Max.				Length	Head Height	Head Diameter	in.	mm.	in.		mm.	
KR Series																
.122	3,1	.04	1,0	.08	2,0	9088	9089	KR 122-039	.14	3,5						
		.08	2,0	.12	3,0	9090	9091	KR 122-079	.18	4,5						
		.12	3,0	.16	4,0	9092	9093	KR 122-118	.22	5,5						
		.16	4,0	.20	5,0	9094	9095	KR 122-157	.26	6,5	.32	8,0	.39	10,0		1
		.20	5,0	.24	6,0	9194	9195	KR 122-197	.30	7,5						
		.22	5,5	.26	6,5	9096	9097	KR 122-217	.32	8,0						
.142	3,6	.04	1,0	.08	2,0	9098	9099	KR 142-039	.14	3,5						
		.08	2,0	.12	3,0	9100	9101	KR 142-079	.18	4,5						
		.12	3,0	.16	4,0	9102	9103	KR 142-118	.22	5,5						
		.14	3,5	.18	4,5	9104	9105	KR 142-137	.24	6,0	.32	8,0	.39	10,0		2
		.18	4,5	.22	5,5	9106	9107	KR 142-177	.28	7,0						
		.22	5,5	.26	6,5	9196	9197	KR 142-217	.32	8,0						
.161	4,1	.10	2,5	.14	3,5	9108	9109	KR 161-098	.20	5,0						
		.14	3,5	.18	4,5	9110	9111	KR 161-137	.24	6,0						
		.18	4,5	.22	5,5	9112	9113	KR 161-177	.28	7,0						
		.22	5,5	.26	6,5	9114	9115	KR 161-217	.32	8,0	.32	8,0	.47	12,0		2
		.26	6,5	.30	7,5	9198	9199	KR 161-256	.35	9,0						
		.30	7,5	.34	8,5	9116	9117	KR 161-295	.39	10,0						

Standard colors black and white.

- The “T” style rivet is designed with a **large finger grip**, knob-shaped head for optimal installation and removal by simply pushing or pulling the rivet from the hole.
- Can be used multiple times.
- Part Description Key: KR X-Y where X = Mounting Hole Diameter (inches) and Y = minimum Panel Thickness (inches).
- Standard Material: Nylon 6. Nylon 6/6 UL 94V-0 available by special order, consult Heyco.
- Standard Pack - 1,000/bag.

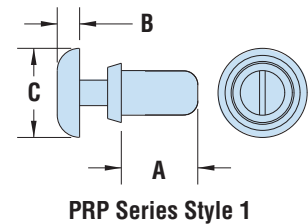


HEYClip™ Type P Snap Rivets

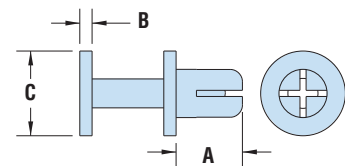
Polysulfone High Temperature Snap Rivets

WILL FIT THESE PANELS					PART NO.		DESCRIPTION	PART DIMENSIONS						STYLE	
MOUNTING HOLE DIA.	ASSEMBLED PANEL THICKNESS				Black			A		B		C			
	in.	mm.	Min.	Max.				Length	Head Height	Head Diameter	in.	mm.	in.		mm.
PRP Series															
.122	3,1	.078	2,0	.118	3,0	9349	PRP 122-079	.18	4,5	.06	1,6	.25	6,4		1
		.118	3,0	.157	4,0	9350	PRP 122-118	.22	5,6						
.161	4,1	.157	4,0	.197	5,0	9351	PRP 122-157	.26	6,5	.04	1,0	.28	7,0		2

Standard color black.



PRP Series Style 1



PRP Series Style 2

	KR	PRP
Material	Nylon 6	Polysulfone (PSU)
Flammability Rating	94V-2	94-HB
Temperature Range	-4°F (-18°C) to 185°F (85°C)	32°F (0°C) to 302°F (150°C)

Quick Specs