

MICRO SWITCH

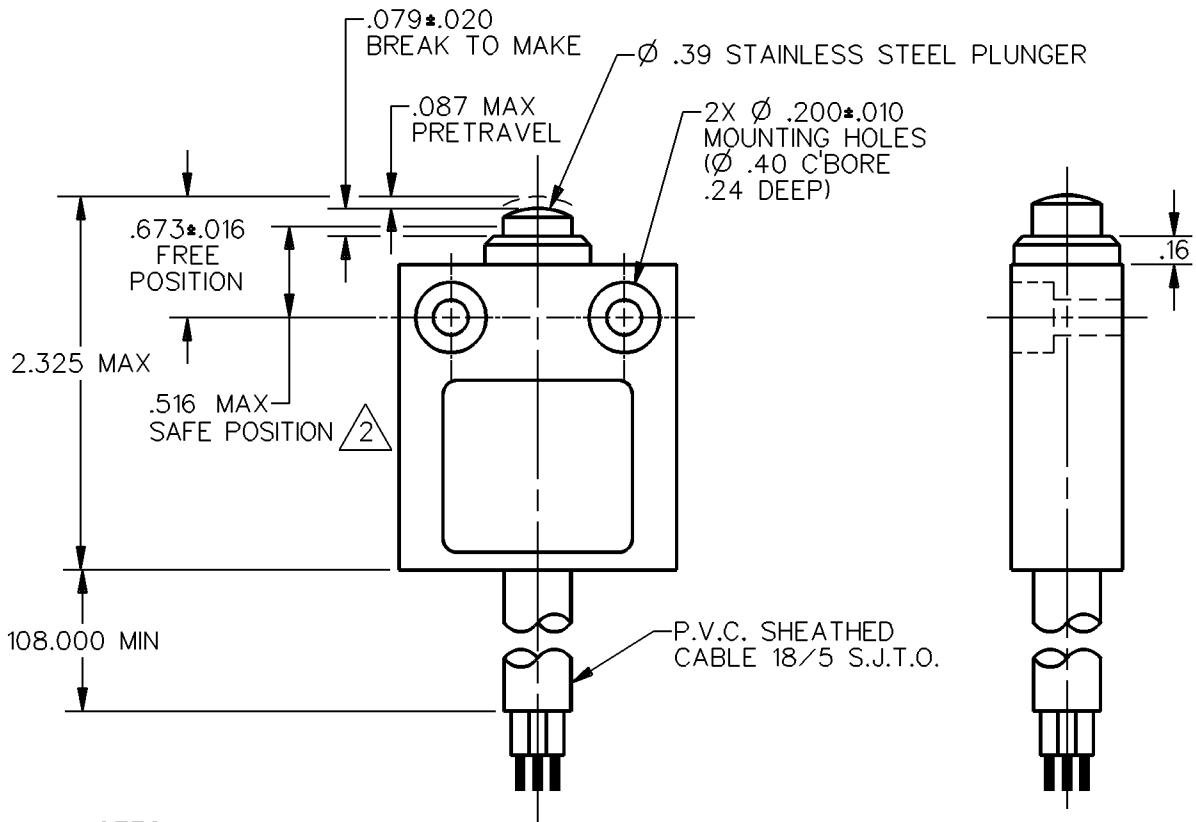
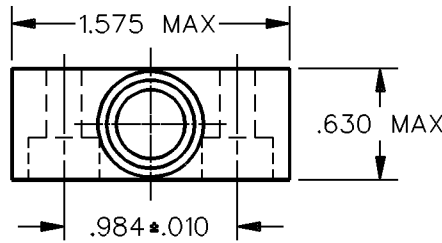
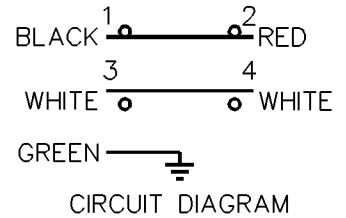
a Honeywell Division

FED. MFG. CODE 91929

MINIATURE PRECISION LIMIT SWITCH

CATALOG LISTING

924CE1-S9



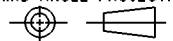
NOTES

- 1 - ZINC HOUSING FINISHED WITH GRAY PAINT
- 2 - THE MINIMUM PLUNGER TRAVEL PAST BREAK, FOR A SAFE CONTACT GAP IS .060
- 3 - SWITCH PROVIDES BREAK BEFORE MAKE CIRCUITRY

ANSI Y14.5M-1982 APPLIES

THIS DRAWING COVERS A PROPRIETARY ITEM AND IS THE PROPERTY OF MICRO SWITCH, A DIVISION OF HONEYWELL. THIS DRAWING IS NOT TO BE COPIED OR USED WITHOUT THE APPROVAL OF MICRO SWITCH.

THIRD ANGLE PROJECTION



CHARACTERISTICS	OPERATING FORCE — — — 5.1 LB MAX	ELECTRICAL DATA	SCALE FULL	DO NOT SCALE PRINT
	OVERTRAVEL — — — — .039 MIN		CONTACT ARRANGEMENT S P D T D B	
		10A-250 VAC 1/3HP-125 OR 250 VAC		ONE PLACE (.0) ±.030
			THREE PLACE (.000) ±.005	ANGLES ±
			WEIGHT	



924CE1-S9
 M
 DRAWING NUMBER
 ISSUE 1
 REVISIONS
 CHECK
 CHECK
 CHECK
 CHECK
 DRAWN
 S A V 10 OCT 91
 DDM/CAD
 REPLACES
 RELEASE NO. CO-69061