

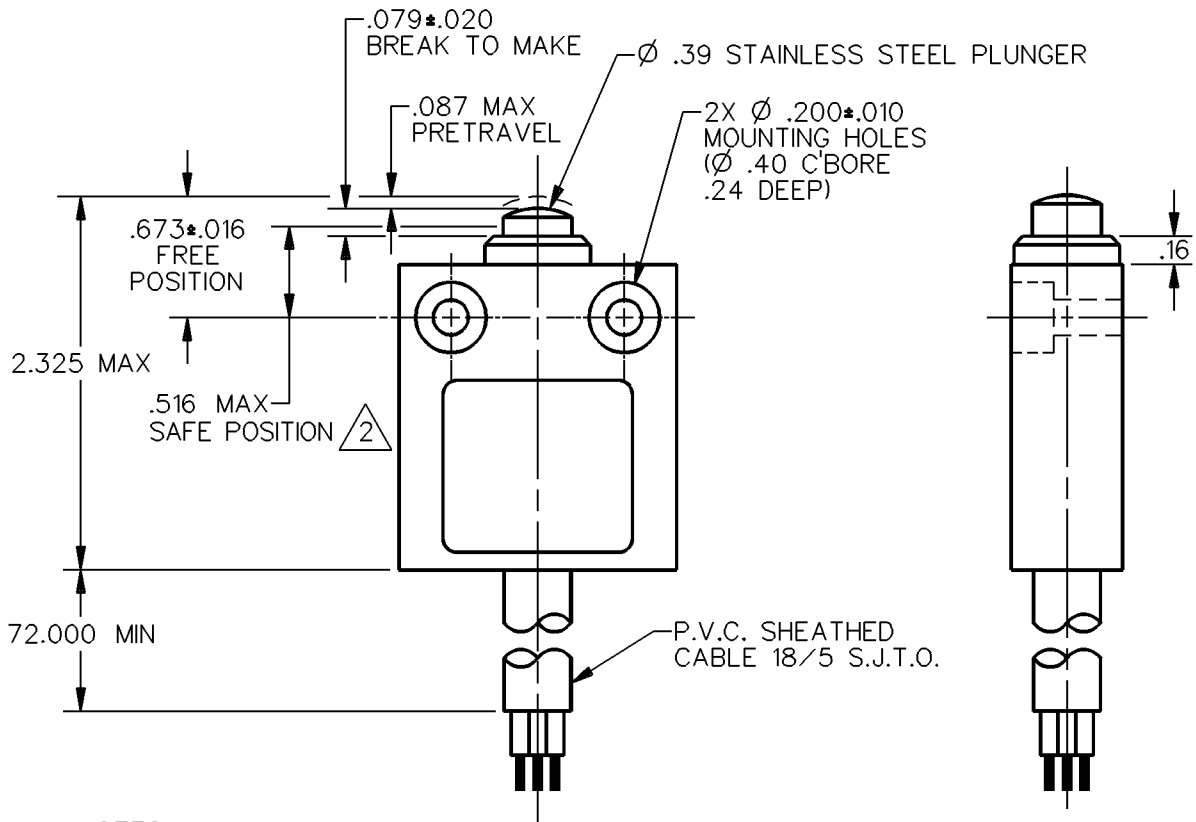
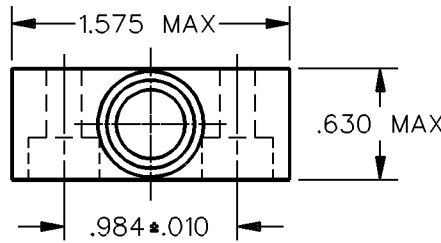
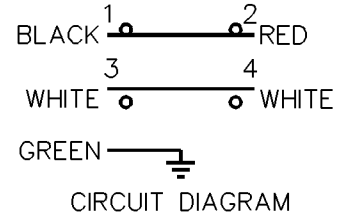
MICRO SWITCH
a Honeywell Division

FED. MFG. CODE 91929

**MINIATURE PRECISION
LIMIT SWITCH**

CATALOG LISTING

924CE1-S6

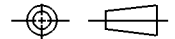


- NOTES
- 1 - ZINC HOUSING FINISHED WITH GRAY PAINT
 - 2 THE MINIMUM PLUNGER TRAVEL PAST BREAK, FOR A SAFE CONTACT GAP IS .060
 - 3 - SWITCH PROVIDES BREAK BEFORE MAKE CIRCUITRY

ANSI Y14.5M-1982 APPLIES

THIS DRAWING COVERS A PROPRIETARY ITEM AND IS THE PROPERTY OF MICRO SWITCH, A DIVISION OF HONEYWELL. THIS DRAWING IS NOT TO BE COPIED OR USED WITHOUT THE APPROVAL OF MICRO SWITCH.

THIRD ANGLE PROJECTION



CHARACTERISTICS	ELECTRICAL DATA	SCALE FULL	DO NOT SCALE PRINT
OPERATING FORCE — — — 5.1 LB MAX	CONTACT ARRANGEMENT S P D T D B	UNLESS OTHERWISE SPECIFIED TOLERANCES ARE	
OVERTRAVEL — — — — .039 MIN	10A-250 VAC 1/3HP-125 OR 250 VAC		
		ONE PLACE (.0) ±.030	
		TWO PLACE (.00) ±.015	
		THREE PLACE (.000) ±.005	
		ANGLES ±	
		WEIGHT	

924CE1-S6
 M
 DRAWING NUMBER
 2
 ISSUE
 REVISIONS
 A CO-69061
 S A V
 29 AUG 91
 CHECK
 CHECK
 DDM/CAD
 DRAWN
 S A V 29 AUG 91
 CHECK
 RELEASE NO. PR-16798
 REPLACES