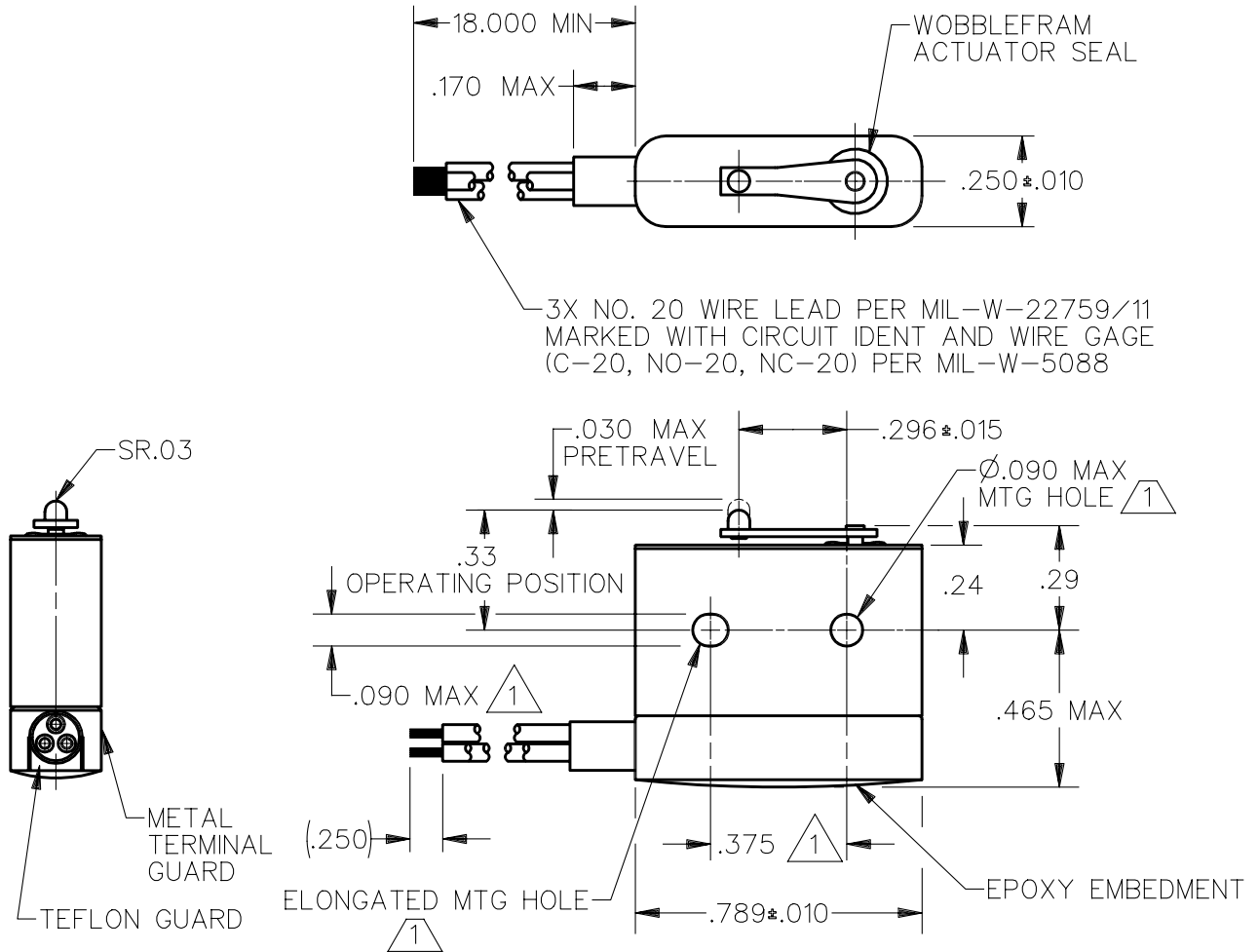


CATALOG LISTING
12HM12-2
PAGE 1 OF 1
RELEASE NO. PR-22432
REPLACES
M
ISSUE 2

REVISIONS
A C094220
DLT
24 MAR 99

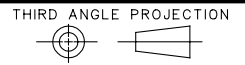
DDM/CAD
DRAWN
K D R 13 NOV 96
CHECK



- NOTES
- 1 MOUNTING HOLES WILL ACCEPT PINS OR SCREWS OF ϕ .087 MAX ON .375 ± .002 CENTERS
 - 2 - FOR USE IN TEMPERATURE RANGE -85°F TO +250°F (DOWN TO -300°F IF WIRE LEADS ARE NOT FLEXED)
 - 3 - HERMETICALLY SEALED (METAL-TO-METAL, GLASS-TO-METAL)
 - 4 - ALL EXPOSED PARTS ARE OF CORROSION RESISTANT MATERIALS
 - 5 WEIGHT OF SWITCH ONLY IS 0.22 OZ MAX. WEIGHT OF CONDUCTOR GROUP ONLY IS 0.09 OZ MAX PER FOOT
 - 6 - DO NOT APPLY MORE THAN 1 1/2 INCH LBS OF TORQUE WHEN TIGHTENING MOUNTING SCREWS

ANSI Y14.5M-1982 APPLIES

THIS DRAWING COVERS A PROPRIETARY ITEM AND IS THE PROPERTY OF MICRO SWITCH, A DIVISION OF HONEYWELL. THIS DRAWING IS NOT TO BE COPIED OR USED WITHOUT THE APPROVAL OF MICRO SWITCH.



CHARACTERISTICS		ELECTRICAL DATA			SCALE 2 : 1	DO NOT SCALE PRINT
OPERATING FORCE — — — — — 7 OZ MAX		CONTACT ARRANGEMENT S P D T			UNLESS OTHERWISE SPECIFIED TOLERANCES ARE	
RELEASE FORCE — — — — — 1 OZ MIN		LINE VOLTAGE	INDUCTIVE LOAD	RESISTIVE LOAD	ONE PLACE (.0)	± .030
DIFFERENTIAL TRAVEL — — — .006 MAX		28 VDC	1 AMP	3 AMP	TWO PLACE (.00)	± .015
OVERTRAVEL — — — — — .003 MIN		115 VAC (400 CYCLE)	1 AMP	3 AMP	THREE PLACE (.000)	± .005
					ANGLES	±
					WEIGHT	± .005