

14HM19-5  
 PAGE 1 OF 1

M

DRAWING NUMBER

4

ISSUE

REPLACES

RELEASE NO. PR-17073

CHECK

CHECK

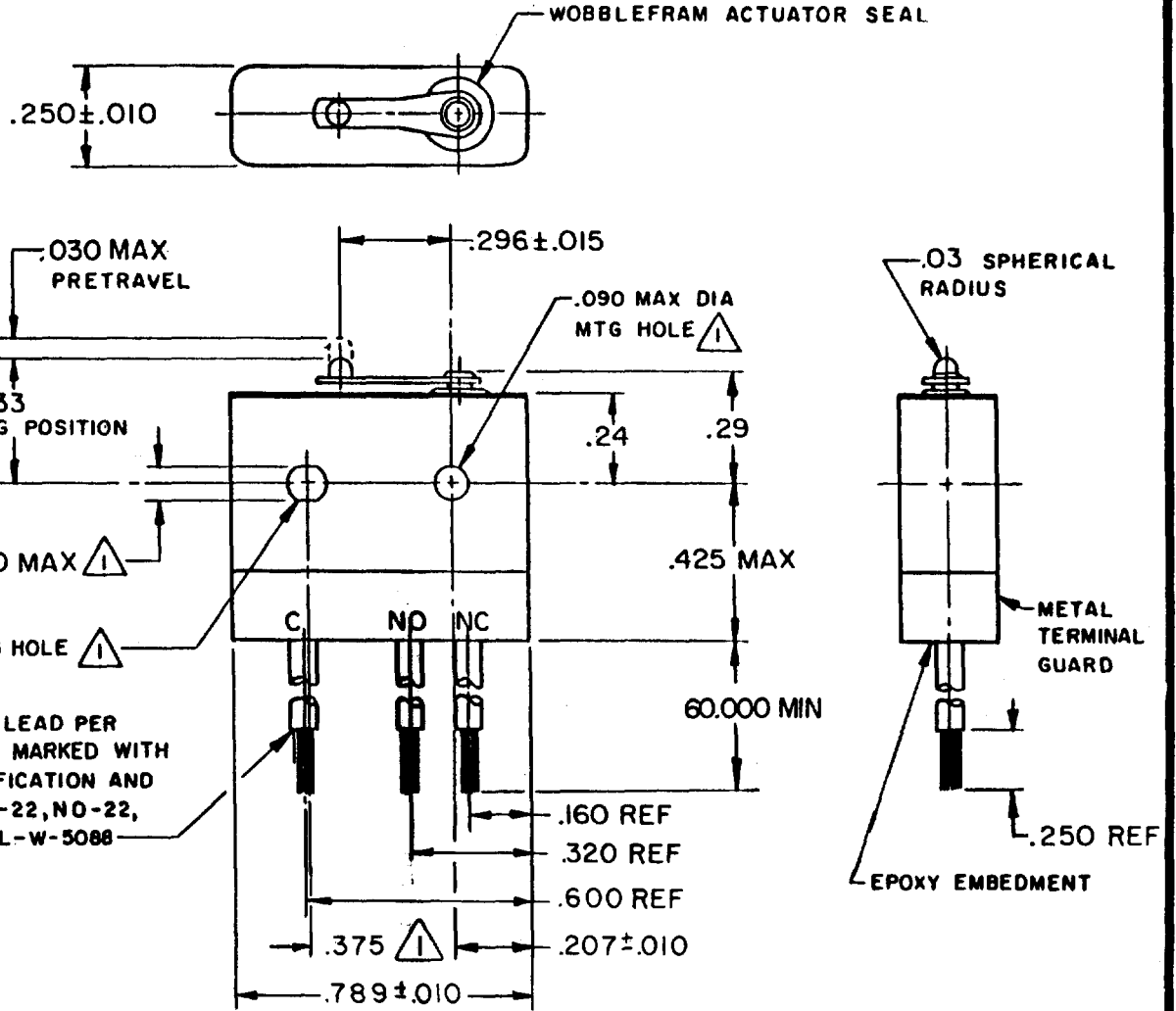
CHECK

REVISIONS

A	PR-17073
K A K	
30 JAN 89	
B	CO 71228
D A W	
29 OCT 91	
C	CO94220
D L T	
24 MAR 99	

FORMTEK  
 FO-52848-B  
 DRAWN

KAK 30J A N89



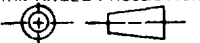
(3) NO. 22 WIRE LEAD PER MIL-W-22759/11 MARKED WITH CIRCUIT IDENTIFICATION AND WIRE GAGE (C-22, NO-22, NC-22) PER MIL-W-5088

NOTES

- 1 MOUNTING HOLES WILL ACCEPT PINS OR SCREWS OF .087 MAX DIA ON .375 ± .002 CENTERS
- 2 - FOR USE IN TEMPERATURE RANGE -85° F TO +325° F
- 3 - HERMETICALLY SEALED (METAL-TO-METAL, GLASS-TO-METAL)
- 4 - ALL EXPOSED PARTS ARE OF CORROSION RESISTANT MATERIALS
- 5 WEIGHT OF SWITCH ONLY IS 0.22 OZ MAX. WEIGHT OF CONDUCTOR GROUP ONLY IS 1.0 OZ MAX PER FOOT
- 6 - DO NOT APPLY MORE THAN 1½ INCH-POUNDS OF TORQUE WHEN TIGHTENING MOUNTING SCREWS
- 7 - SWITCH WILL REMAIN FUNCTIONAL AFTER BEING SUBJECTED TO THE SHOCK OF MIL-S-901 GRADE A, SUBASSEMBLY, CLASS 1 LIGHT WEIGHT TYPE C
- 8 - GOLD ALLOY STATIONARY CONTACTS
- 9 - 24K GOLD MOVABLE CONTACT

THIS DRAWING COVERS A PROPRIETARY ITEM AND IS THE PROPERTY OF MICRO SWITCH, A DIVISION OF HONEYWELL. THIS DRAWING IS NOT TO BE COPIED OR USED WITHOUT THE APPROVAL OF MICRO SWITCH.

THIRD ANGLE PROJECTION



CHARACTERISTICS	ELECTRICAL DATA		SCALE 2:1	DO NOT SCALE PRINT
	CONTACT ARRANGEMENT S P D T		UNLESS OTHERWISE SPECIFIED TOLERANCES ARE	
OPERATING FORCE ----- 7 OZ MAX	LOAD	SEA LEVEL	70,000FT	ONE PLACE (.0) ± .030
RELEASE FORCE ----- 1 OZ MIN		28 VDC	28 VDC	TWO PLACE (.00) ± .015
DIFFERENTIAL TRAVEL ----- .006 MAX OVERTRAVEL ----- .003 MIN	RESISTIVE	1 AMP	1 AMP	THREE PLACE (.000) ± .005
	INDUCTIVE	1/4 AMP	1/4 AMP	ANGLES ±
WEIGHT				△