

**MICRO SWITCH**  
a Honeywell Division

FED. MFG. CODE 91 929

**SWITCH - BASIC**

CATALOG LISTING  
**19HM3-CB**

X111559-HM

REPLACES

PR-23850

PAGE 1 OF 1

CHECK

APR 04

AK

CHECK

19 FEB 99

J A F

CHECK

19 FEB 99

L J K

CATALOG LISTING  
**19HM3-CB**

PAGE 1 OF 1

ISSUE  
**M**

2

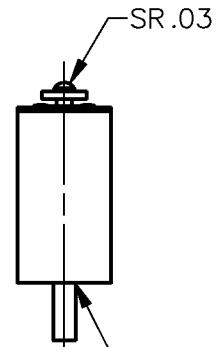
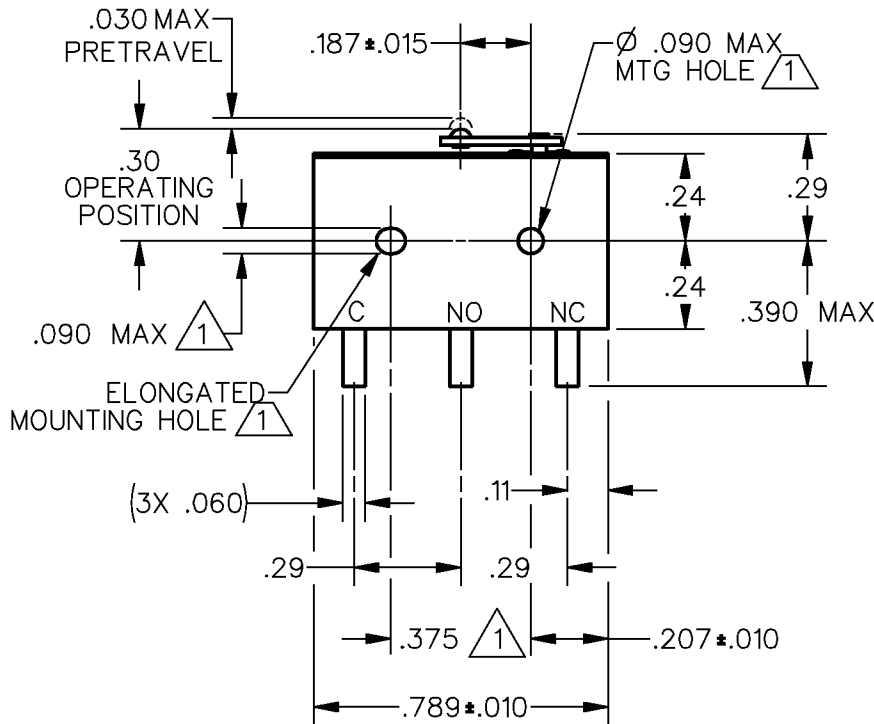
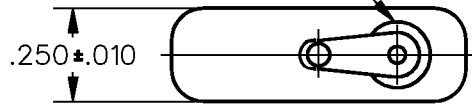
REVISIONS

A 0004462

KSR  
APR 04

FORMTEK  
DRAWN

WOBBLEFRAM ACTUATOR SEAL



TERMINAL AREA  
NOT EMBEDDED

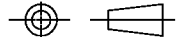
**NOTES**

- 1 MOUNTING HOLES WILL ACCEPT PINS OR SCREWS OF Ø .087 MAX ON .375 ± .002 CENTERS
- 2 - FOR USE IN TEMPERATURE RANGE -300°F TO +500°F
- 3 - HERMETICALLY SEALED (METAL-TO-METAL, GLASS-TO-METAL)
- 4 - ALL EXPOSED PARTS ARE OF CORROSION RESISTANT MATERIALS
- 5 - TERMINALS ARE TINNED FOR SOLDERING
- 6 - DO NOT: APPLY MORE THAN 1 1/2 INCH-LBS OF TORQUE WHEN TIGHTENING MOUNTING SCREWS
- 7 - GOLD ALLOY MOVABLE CONTACT AND GOLD ALLOY STATIONARY CONTACTS
- 8 - DRY NITROGEN FILL GAS

ANSI Y14.5M-1982 APPLIES

THIS DRAWING COVERS A PROPRIETARY ITEM AND IS THE PROPERTY OF MICRO SWITCH, A DIVISION OF HONEYWELL. THIS DRAWING IS NOT TO BE COPIED OR USED WITHOUT THE APPROVAL OF MICRO SWITCH.

THIRD ANGLE PROJECTION



CHARACTERISTICS	ELECTRICAL DATA	SCALE 2 : 1	DO NOT SCALE PRINT
OPERATING FORCE — — — 11.0 OZ MAX	CONTACT ARRANGEMENT SPDT	<b>UNLESS OTHERWISE SPECIFIED TOLERANCES ARE</b> ONE PLACE (.0) ± .030 TWO PLACE (.00) ± .015 THREE PLACE (.000) ± .005 ANGLES ± WEIGHT .014 LB MAX	
RELEASE FORCE — — — 1.5 OZ MIN	28 VOLTS DC RATING INDUCTIVE — SEA LEVEL - 1/4 AMP 70,000 FT - 1/4 AMP RESISTIVE — SEA LEVEL - 1/2 AMP 70,000 FT - 1/2 AMP		
DIFFERENTIAL TRAVEL — — — .004 MAX			
OVERTRAVEL — — — .006 MIN			