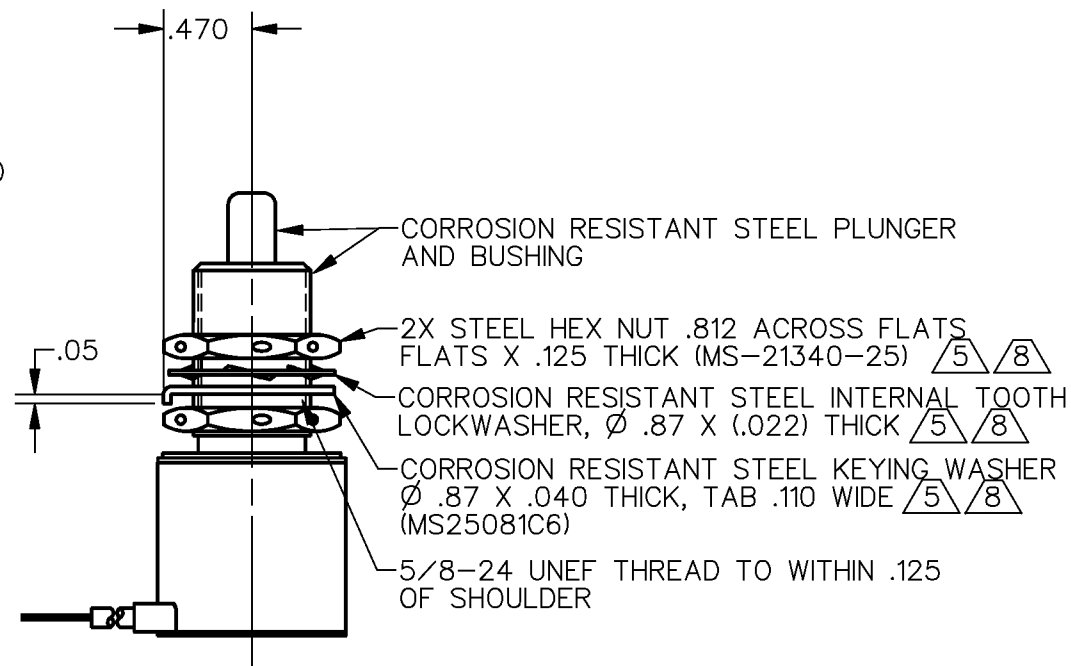
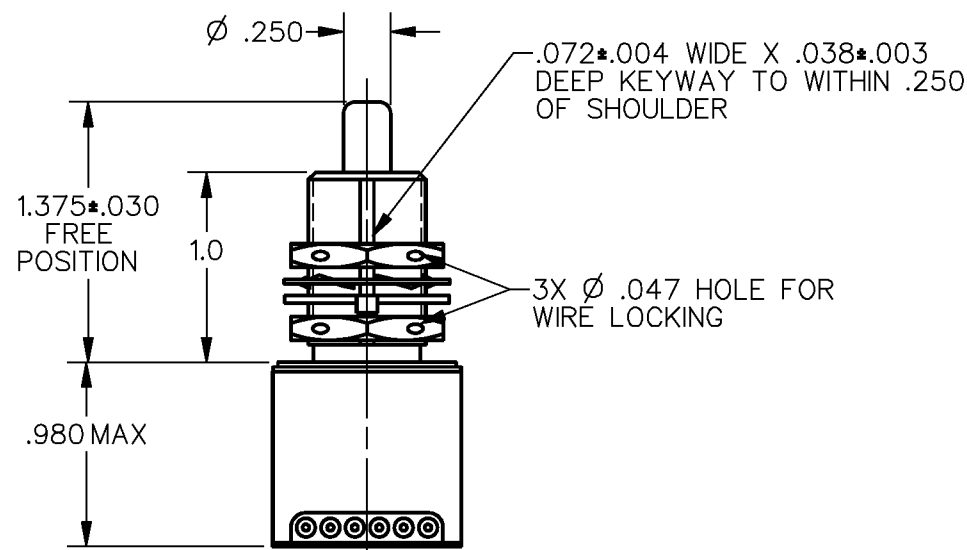
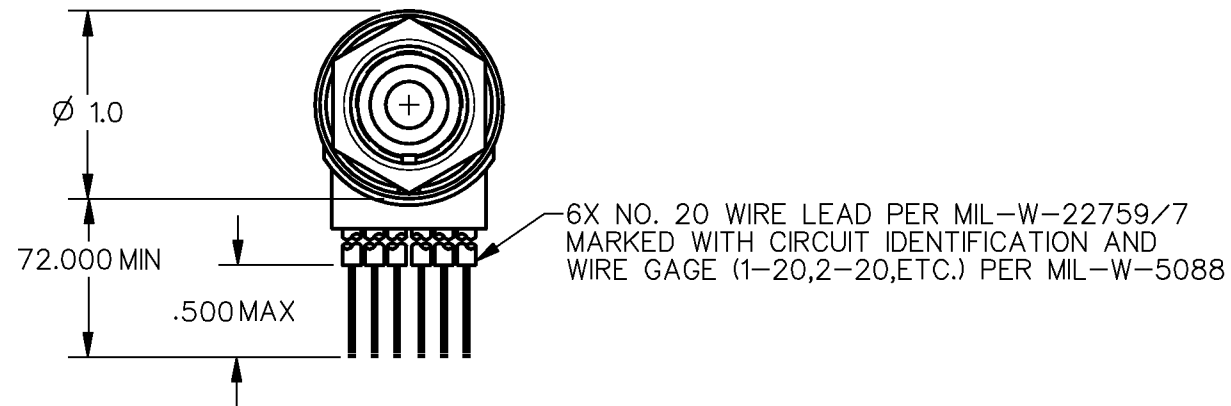
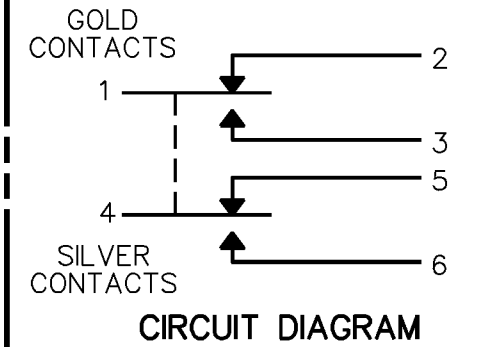


MICRO SWITCH
a Honeywell Division

FED. MFG. CODE 91929

SWITCH - ENCLOSED

CATALOG LISTING
1EN118-6



NOTES

- 1 - CORROSION RESISTANT STEEL ENCLOSURE
- 2 - SWITCH SEALED PER MIL-PRF-8805 SYMBOL 4
- 3 - COINCIDENCE OF OPERATING AND RELEASING POINTS: .004 OF PLUNGER TRAVEL
- 4 - CIRCUIT DIAGRAM, CATALOG LISTING, FED. MFG. CODE AND DATE CODE ARE PERMANENTLY MARKED ON SIDE OF HOUSING
- 5 8 HARDWARE MAY BE PACKAGED UNASSEMBLED PER MIL-PRF-8805
- 6 8 RATING APPLIES TO CIRCUIT 1-2-3
- 7 8 RATING APPLIES TO CIRCUIT 4-5-6
- 8 8 REPLACEMENT MOUNTING HARDWARE - PACKET 19PA8
- 9 - PLUNGER SEAL MATERIAL - FLOUROSILICONE

CATALOG LISTING
1EN118-6

PAGE 1 OF 1

ISSUE
M
5

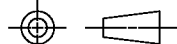
REVISIONS

A	PR	20292	TSM	14 DEC 92
B	CO	94194	D L	8 MAR 99
C	CO	201294	G J W	26 SEP 00

RELEASE NO. PR-20292
CHECK
D A W
14 DEC 92
CHECK
DRAWN
T S M
14 DEC 92

THIS DRAWING COVERS A PROPRIETARY ITEM AND IS THE PROPERTY OF MICRO SWITCH, A DIVISION OF HONEYWELL. THIS DRAWING IS NOT TO BE COPIED OR USED WITHOUT THE APPROVAL OF MICRO SWITCH

THIRD ANGLE PROJECTION



CHARACTERISTICS	
OPERATING FORCE	6-12 LB
FULL OVERTRAVEL FORCE	30 LB MAX
RELEASE FORCE	4 LB MIN
PRETRAVEL	.040 MAX
DIFFERENTIAL TRAVEL	.020 MAX
OVERTRAVEL	.250 MIN

ELECTRICAL DATA				
CONTACT ARRANGEMENT 2X S P D T				
LOAD	28 VDC			
	7 SEA LEVEL	6	7 50,000 FT.	6
RES	4	1	4	1
IND	2	.5	2	.5
MOTOR	4			

SCALE	FULL
DO NOT SCALE PRINT	
UNLESS OTHERWISE SPECIFIED TOLERANCES ARE	
ONE PLACE	(.0) ±.030
TWO PLACE	(.00) ±.015
THREE PLACE	(.000) ±.005
ANGLES	±
WEIGHT	.46 LB MAX

ANSI Y14.5M-1982 APPLIES