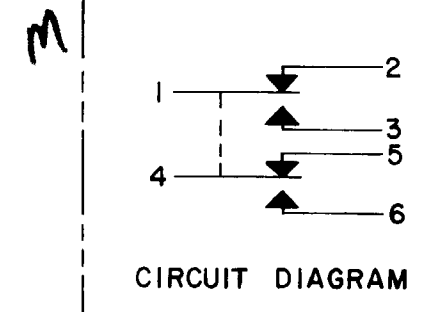


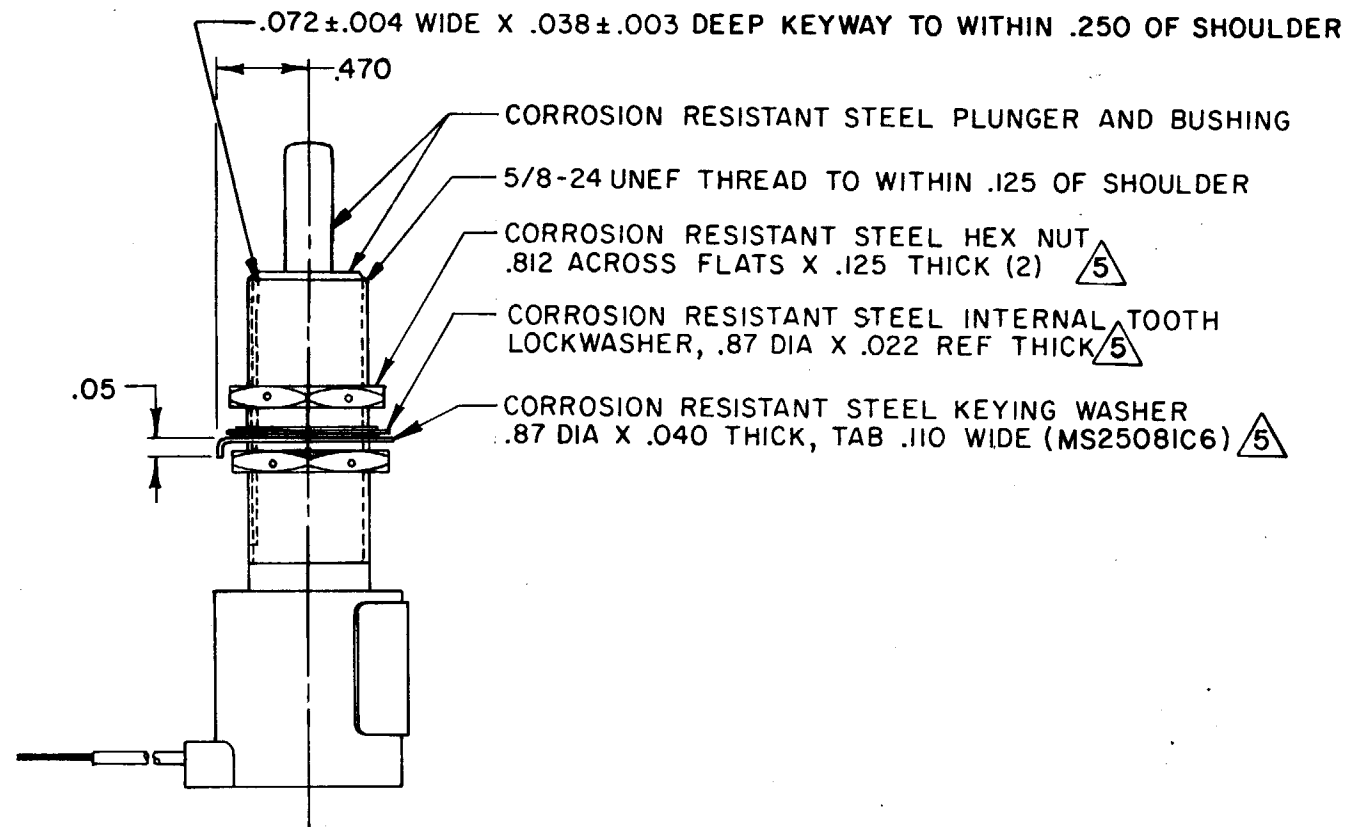
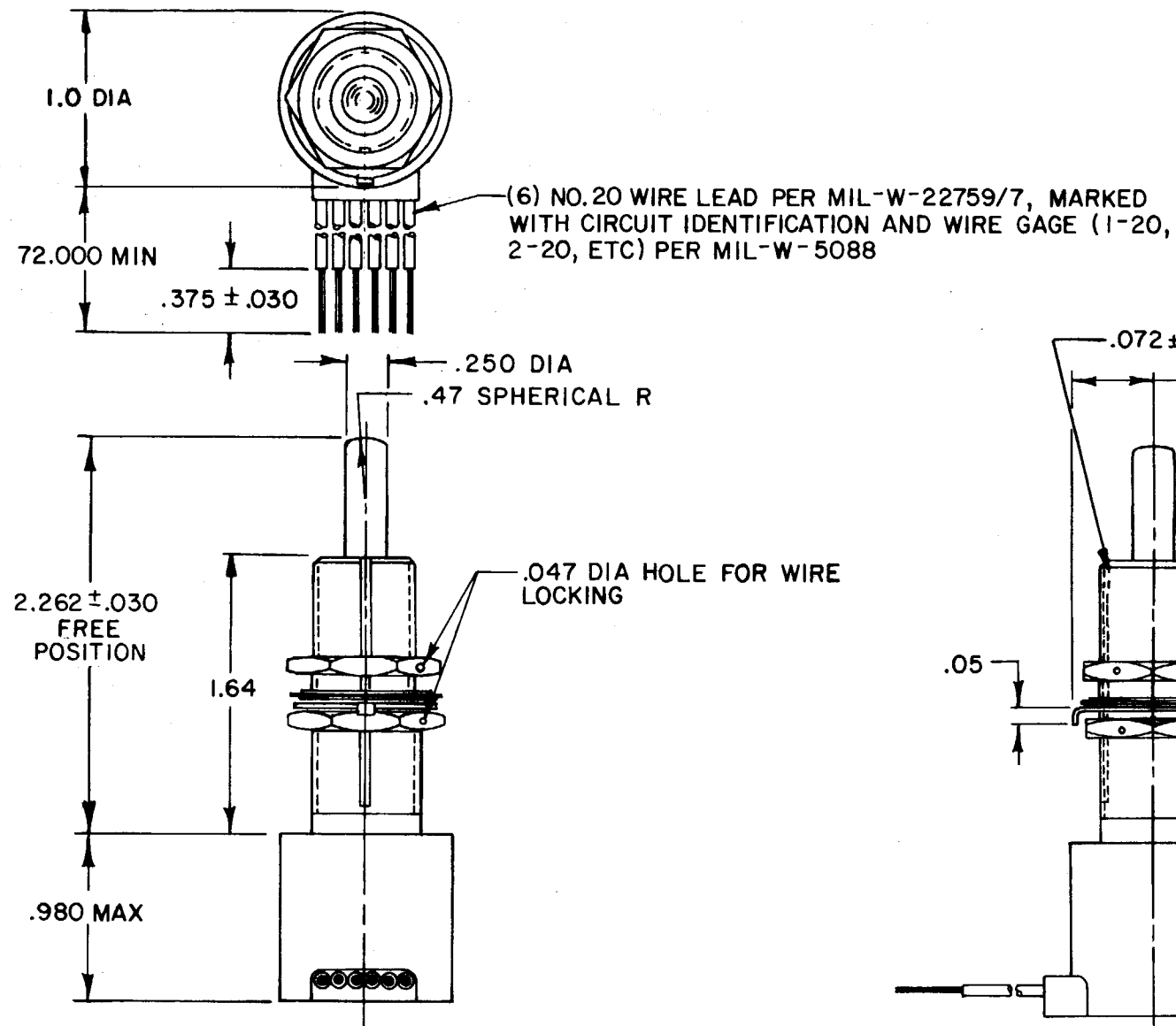
MICRO SWITCH
 FREEPORT ILLINOIS U S A
 A DIVISION OF HONEYWELL
 FED. MFG. CODE 91929

SWITCH - ENCLOSED

CATALOG LISTING
1EN341-6



M 1EN341-6
 DRAWING NUMBER
 8
 ISSUE
 6
 REVISIONS
 A C044251 PART 7 WJM 4 APR 79
 B C047573 J A P 5 AUG 80
 C C057370 TSK 14 MAY 85
 D C074101 G J W 18 JAN 93
 E C077504A JJO 12 MAR 94
 CHECK
 20 APR 79
 4 APR 79
 WJM 4 APR 79
 FO-52851-A
 DRAWN



- NOTES**
- 1 - CORROSION RESISTANT STEEL ENCLOSURE
 - 2 - SWITCH SEALED PER MIL-S-8805 SYMBOL 4
 - 3 - CIRCUIT DIAGRAM, CATALOG LISTING, AND CUSTOMER PART NUMBER ARE SHOWN ON NAMEPLATE
 - 4 - COINCIDENCE OF OPERATING AND RELEASING POINTS: .010 OF PLUNGER TRAVEL
 - 5 - HARDWARE MAY BE PACKAGED UNASSEMBLED PER MIL-S-8805

THIS DRAWING COVERS A PROPRIETARY ITEM AND IS THE PROPERTY OF MICRO SWITCH, A DIVISION OF HONEYWELL. THIS DRAWING IS NOT TO BE COPIED OR USED WITHOUT THE APPROVAL OF MICRO SWITCH.		THIRD ANGLE PROJECTION	SCALE FULL
CHARACTERISTICS		ELECTRICAL DATA	
OPERATING FORCE ----- 6-12 LBS		CONTACT ARRANGEMENT	
FULL OVERTRAVEL FORCE --- 30 LBS MAX		SPDT (2)	
RELEASE FORCE ----- 4 LBS MIN		LOAD	
PRETRAVEL ----- .040 MAX		28 VDC	
DIFFERENTIAL TRAVEL ----- .020 MAX		SEA LEVEL	50,000 FT.
OVERTRAVEL ----- .500 MIN		RES	4
		IND	2
		MOTOR	4
		WEIGHT 8.0 OZ MAX	

DO NOT SCALE PRINT			
TOLERANCES			
APPLY TO DESIGN UNITS. CONVERSIONS ARE ONLY FOR REFERENCE. UNLESS NOTED, TOLERANCES ARE ±			
DIM.	TOL.	DIM.	TOL.
mm	mm/in	in	mm/in
NO PLACES	X	1/04	
ONE PLACE	X,X	0.47/016	X X 0.81/03
TWO PLACES	X,XX	0.151/006	X XX 0.381/015
THREE PLACES	X,XXX		X XXX 0.131/005
ANGLES			
SI METRIC		US CUSTOMARY	
DESIGN UNITS: <input type="checkbox"/>		<input checked="" type="checkbox"/>	
RAW MATERIAL-COMMERCIAL STANDARD			
MICRO SWITCH STANDARDS APPLY			
DIMENSIONS ARE TO BE MET BEFORE PROTECTIVE COATINGS ARE APPLIED			