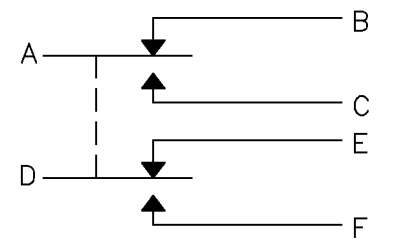


MICRO SWITCH
a Honeywell Division

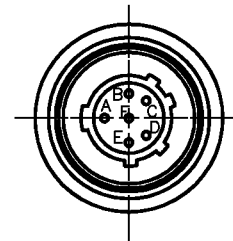
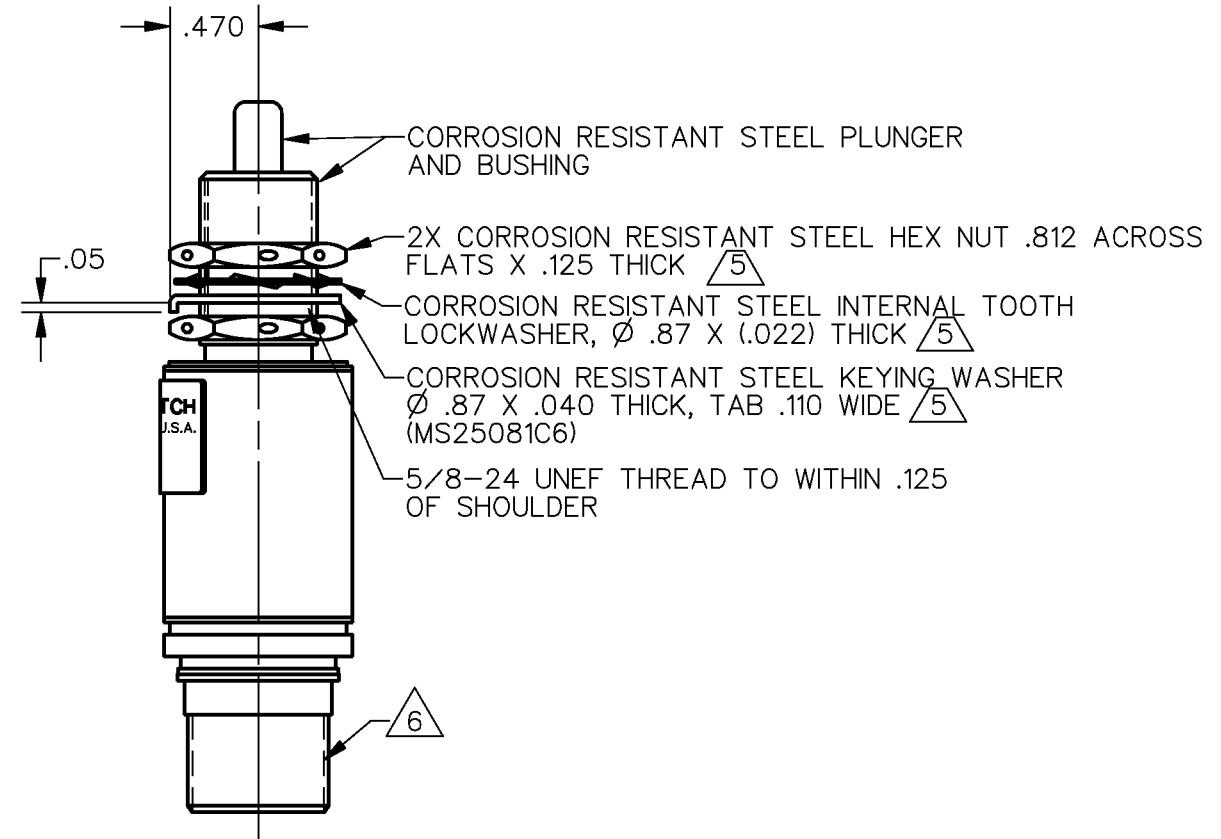
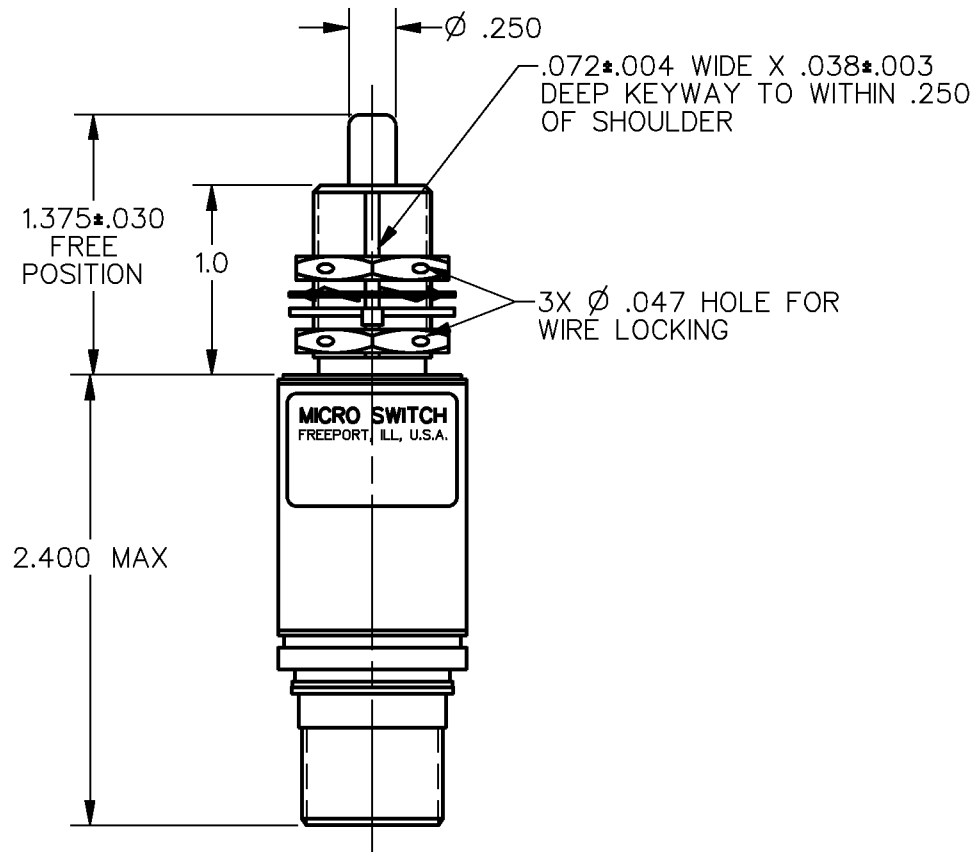
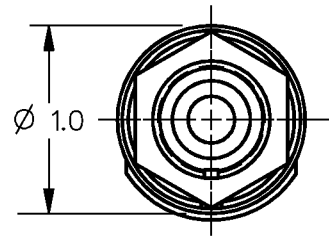
FED. MFG. CODE 91929

SWITCH — ENCLOSED

CATALOG LISTING
1EN415-RB



CIRCUIT DIAGRAM



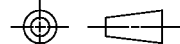
NOTES

- 1 - CORROSION RESISTANT STEEL ENCLOSURE
- 2 - SWITCH SEALED PER MIL-S-8805 SYMBOL 4
- 3 - COINCIDENCE OF OPERATING AND RELEASING POINTS: .010 OF PLUNGER TRAVEL
- 4 - CIRCUIT DIAGRAM, DATE CODE, FED. MFG. CODE AND CATALOG LISTING ARE SHOWN ON NAMEPLATE
- (5) HARDWARE MAY BE PACKAGED UNASSEMBLED PER MIL-S-8805
- (6) D38999/25YB98PN
- (7) GOLD CONTACT BASIC SWITCHES

DDM/CAD DRAWN J J A 30AUG95
 CHECK T S M 1 SEP 95
 CHECK J J A 30AUG95
 REVISIONS
 A PR 21754 JJA 30 AUG 95
 B CO 93970 SAV 14 JAN 99
 ISSUE 3
 M
 PAGE 1 OF 1
 RELEASE NO. PR-21754 REPLACES
 CATALOG LISTING 1EN415-RB

THIS DRAWING COVERS A PROPRIETARY ITEM AND IS THE PROPERTY OF MICRO SWITCH, A DIVISION OF HONEYWELL. THIS DRAWING IS NOT TO BE COPIED OR USED WITHOUT THE APPROVAL OF MICRO SWITCH

THIRD ANGLE PROJECTION



CHARACTERISTICS

OPERATING FORCE	4 LB NOM
FULL OVERTRAVEL FORCE	17 LB MAX
RELEASE FORCE	2 LB MIN
PRETRAVEL	.040 MAX
DIFFERENTIAL TRAVEL	.020 MAX
OVERTRAVEL	.250 MIN

ELECTRICAL DATA

CONTACT ARRANGEMENT		
2X SPDT (7)		
28 VDC		
LOAD	SEA LEVEL	50,000 FT.
RES	1	1
IND	.5	.5

SCALE FULL

DO NOT SCALE PRINT

UNLESS OTHERWISE SPECIFIED TOLERANCES ARE

ONE PLACE	(.0)	±.030
TWO PLACE	(.00)	±.015
THREE PLACE	(.000)	±.005
ANGLES		±

WEIGHT 5.0 OZ MAX

ANSI Y14.5M-1982 APPLIES