

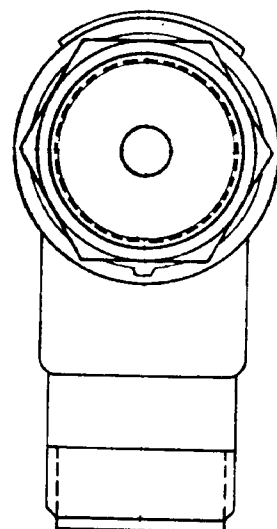
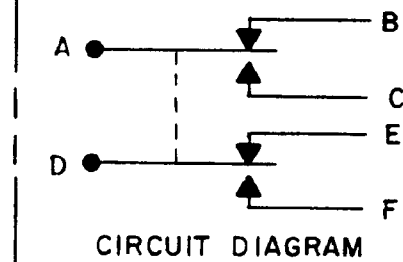
MICRO SWITCH

FREEPORT ILLINOIS U.S.A.
A DIVISION OF HONEYWELL

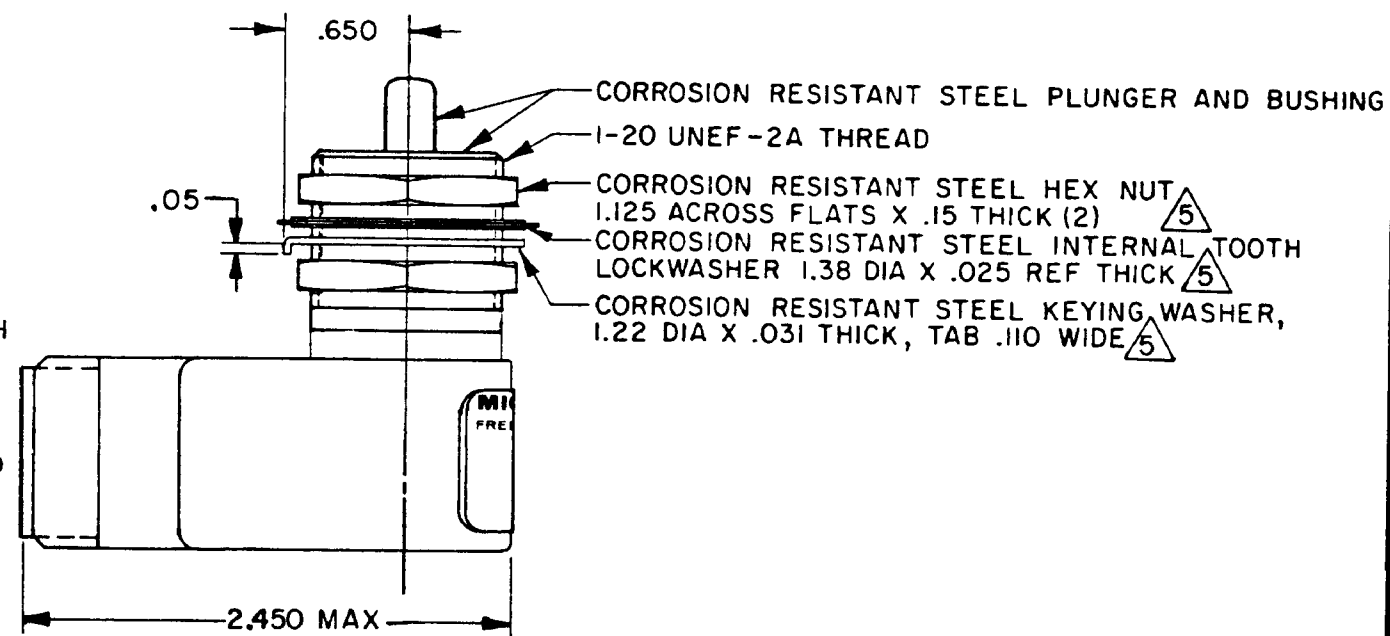
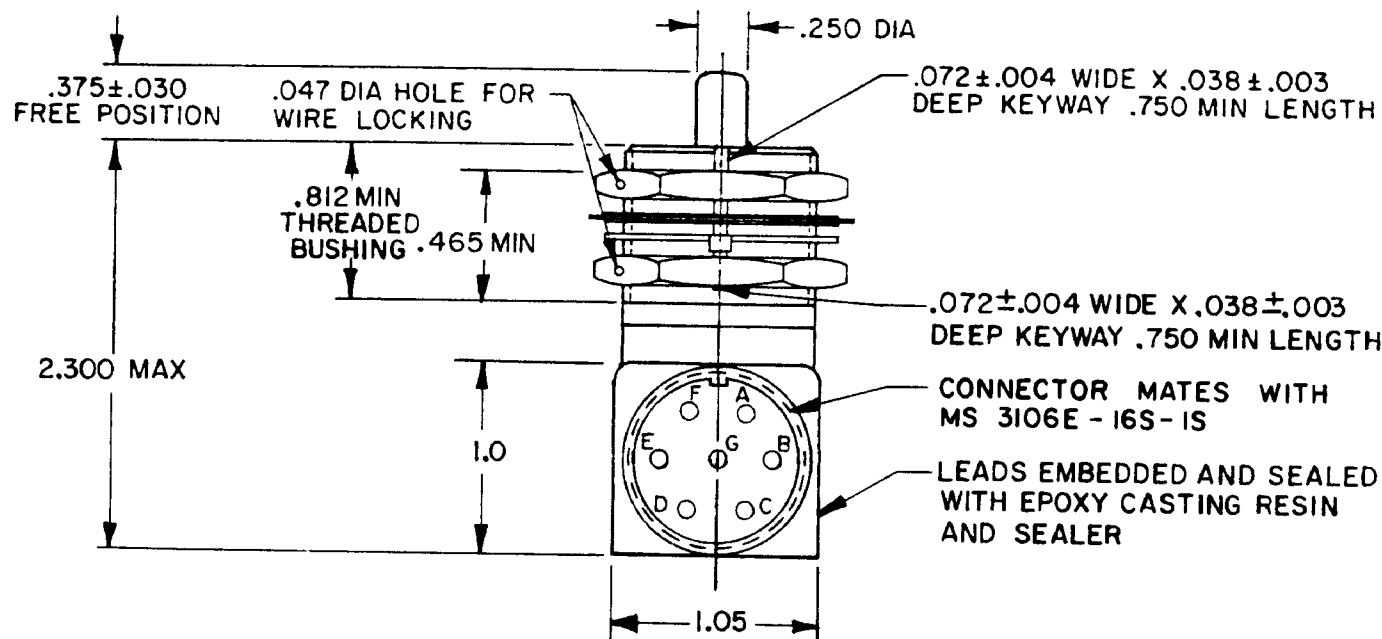
FED MFG CODE 91929

SWITCH-ENCLOSED

CATALOG LISTING
1EN76-R4



M 1EN76-R4
 DRAWING NUMBER
 ISSUE 4
 CHECK KAG 10 DEC 83
 WJM 9 DEC 83
 F0-52851-A
 RELEASE NO PR-12593
 REPLACES
 REVISIONS
 A CO-68547 SAV 15 OCT 90
 B CO68501 TSM 2 JAN 91
 C CO73874 TSM 5 DEC 92



THIS DRAWING COVERS A PROPRIETARY ITEM AND IS THE PROPERTY OF MICRO SWITCH, A DIVISION OF HONEYWELL. THIS DRAWING IS NOT TO BE COPIED OR USED WITHOUT THE APPROVAL OF MICRO SWITCH

THIRD ANGLE PROJECTION

SCALE FULL

DO NOT SCALE PRINT

TOLERANCES
APPLY TO DESIGN UNITS. CONVERSIONS ARE ONLY FOR REFERENCE. UNLESS NOTED, TOLERANCES ARE ±

	DIM	TOL	DIM	TOL
	mm	mm/in	in	mm/in
NO PLACES	X	1/04	X	
ONE PLACE	X,X	0.4/018	X,X	0.8/03
TWO PLACES	X,XX	0.15/006	X,XX	0.38/018
THREE PLACES	X,XXX		X,XXX	0.13/005
ANGLES				

DESIGN UNITS SI METRIC US CUSTOMARY

RAW MATERIAL-COMMERCIAL STANDARD
MICRO SWITCH STANDARDS APPLY
DIMENSIONS ARE TO BE MET BEFORE
PROTECTIVE COATINGS ARE APPLIED

WEIGHT

CHARACTERISTICS	ELECTRICAL DATA
OPERATING FORCE ——— 6-12 LB	CONTACT ARRANGEMENT
FULL OVERTRAVEL FORCE — 30 LB MAX	SPDT (2)
RELEASE FORCE ——— 4 LB MIN	LOAD
PRETRAVEL ——— .040 MAX	28 VDC
DIFFERENTIAL TRAVEL — .020 MAX	SEA LEVEL 50,000 FT.
OVERTRAVEL ——— .250 MIN	RES 5
	IND 3
	MOTOR 4

NOTES

- 1 - CORROSION RESISTANT STEEL ENCLOSURE
- 2 - SWITCH SEALED PER MIL-S-8805 SYMBOL 4
- 3 - CIRCUIT DIAGRAM AND CATALOG LISTING ARE SHOWN ON NAMEPLATE
- 4 - COINCIDENCE OF OPERATING AND RELEASING POINTS: .010 OF PLUNGER TRAVEL
- 5 - HARDWARE MAY BE PACKAGED UNASSEMBLED PER MIL-S-8805