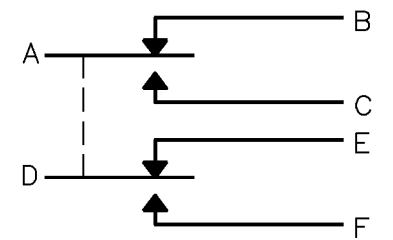


MICRO SWITCH
a Honeywell Division

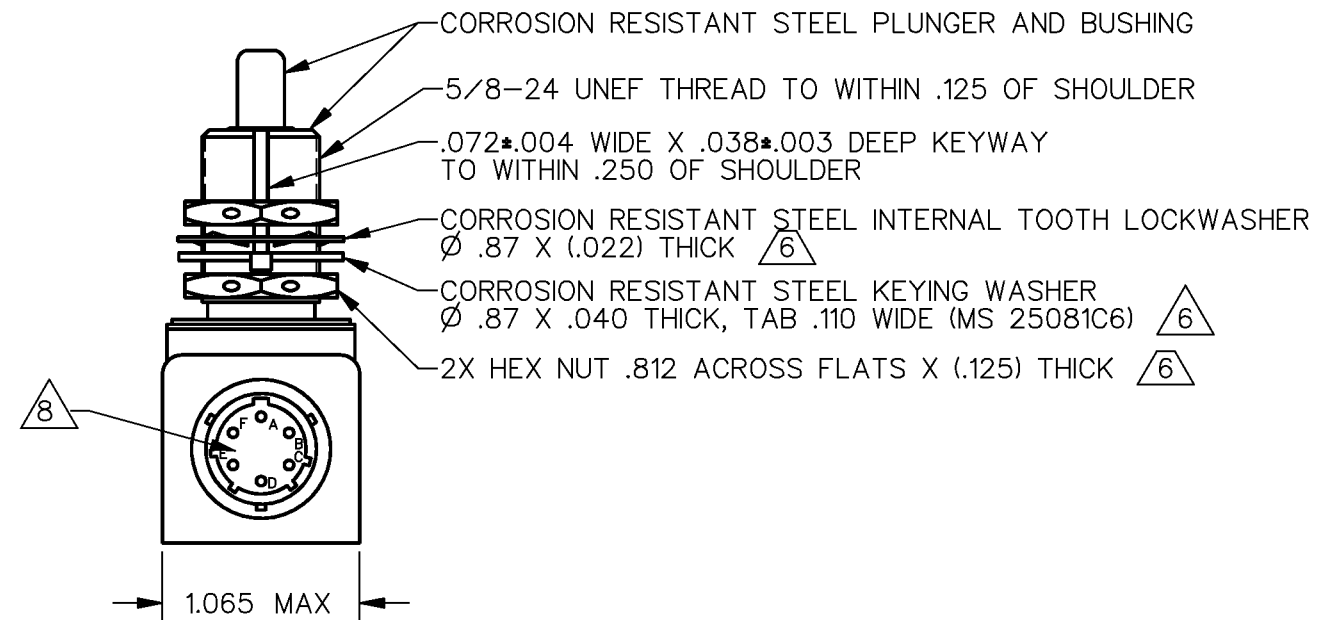
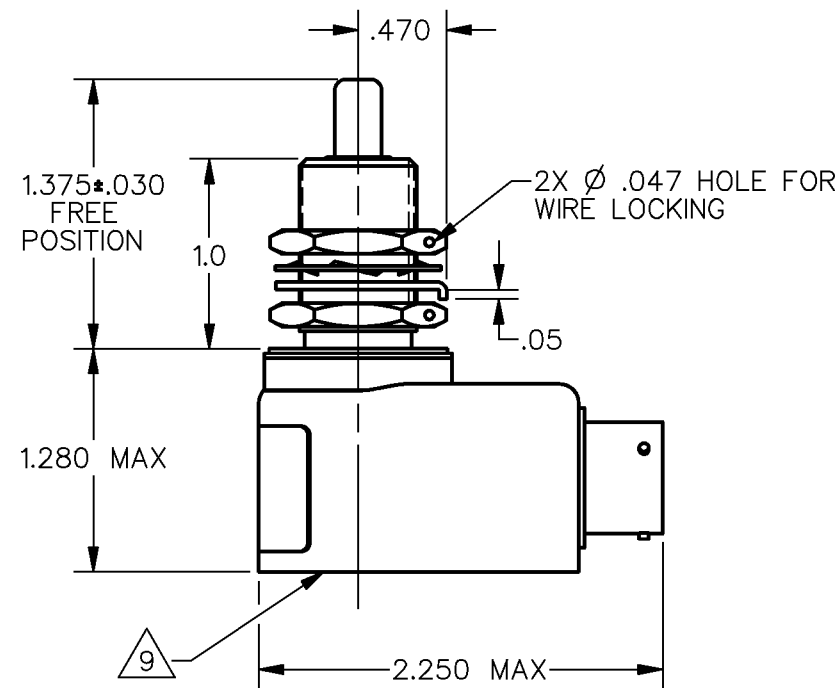
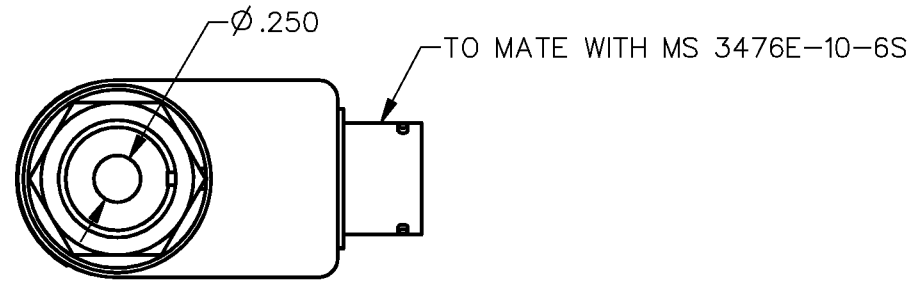
FED. MFG. CODE 91929

SWITCH-ENCLOSED

CATALOG LISTING
1HE44-R



CIRCUIT DIAGRAM



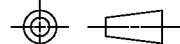
NOTES

- 1 - CORROSION RESISTANT STEEL ENCLOSURE
- 2 - SWITCH SEALED PER MIL-S-8805 SYMBOL 5
- 3 - FOR OPERATION IN TEMPERATURES OF -65°F TO +257°F
- 4 - COINCIDENCE OF OPERATING AND RELEASING POINTS: .010 INCH OF PLUNGER TRAVEL
- 5 - CIRCUIT DIAGRAM AND CATALOG LISTING ARE SHOWN ON NAMEPLATE
- (6) HARDWARE MAY BE PACKAGED UNASSEMBLED PER MIL-S-8805
- 7 - PLUNGER SEAL MATERIAL E.P. RUBBER
- (8) INTERFACIAL SEAL
- (9) LEADS EMBEDDED AND SEALED WITH EPOXY CASTING SEALER

CATALOG LISTING
 1HE44-R
 PAGE 1 OF 1
 RELEASE NO. PR-5613
 REPLACES
 ISSUE
 9
 CHECK
 REVISIONS
 A CO-81044B
 G J W
 29 SEP 96
 CHECK
 CHECK
 DDM/CAD
 DRAWN
 G J W 29 SEP 96
 CHECK

THIS DRAWING COVERS A PROPRIETARY ITEM AND IS THE PROPERTY OF MICRO SWITCH, A DIVISION OF HONEYWELL. THIS DRAWING IS NOT TO BE COPIED OR USED WITHOUT THE APPROVAL OF MICRO SWITCH

THIRD ANGLE PROJECTION



CHARACTERISTICS	
OPERATING FORCE	6-12 LB
FULL OVERTRAVEL FORCE	30 LB MAX
RELEASE FORCE	4 LB MIN
PRETRAVEL	.040 MAX
DIFFERENTIAL TRAVEL	.020 MAX
OVERTRAVEL	.250 MIN

ELECTRICAL DATA		
CONTACT ARRANGEMENT 2X S P D T		
LOAD	28 VDC	
	SEA LEVEL	100,000 FT
RES	5	5
IND	3	3
MOTOR	4	4

SCALE FULL	
DO NOT SCALE PRINT	
UNLESS OTHERWISE SPECIFIED TOLERANCES ARE	
ONE PLACE	(.0) ± .030
TWO PLACE	(.00) ± .015
THREE PLACE	(.000) ± .005
ANGLES	±
WEIGHT 6 OZ MAX	

ANSI Y14.5M-1982 APPLIES