

MICRO SWITCH

A DIVISION OF MINNEAPOLIS-HONEYWELL REGULATOR COMPANY
 PHOENIX, ARIZONA
 FED. MFR. CODE 91929

SWITCH - BASIC

CATALOG LISTING

1HS104

S

1HS104

M

DRAWING NUMBER

ISSUE

REPLACES

RELEASE NO. SR 10464

CHECK

REVISIONS

CHECK

CHECK

CHECK

CHECK

CHECK

CHECK

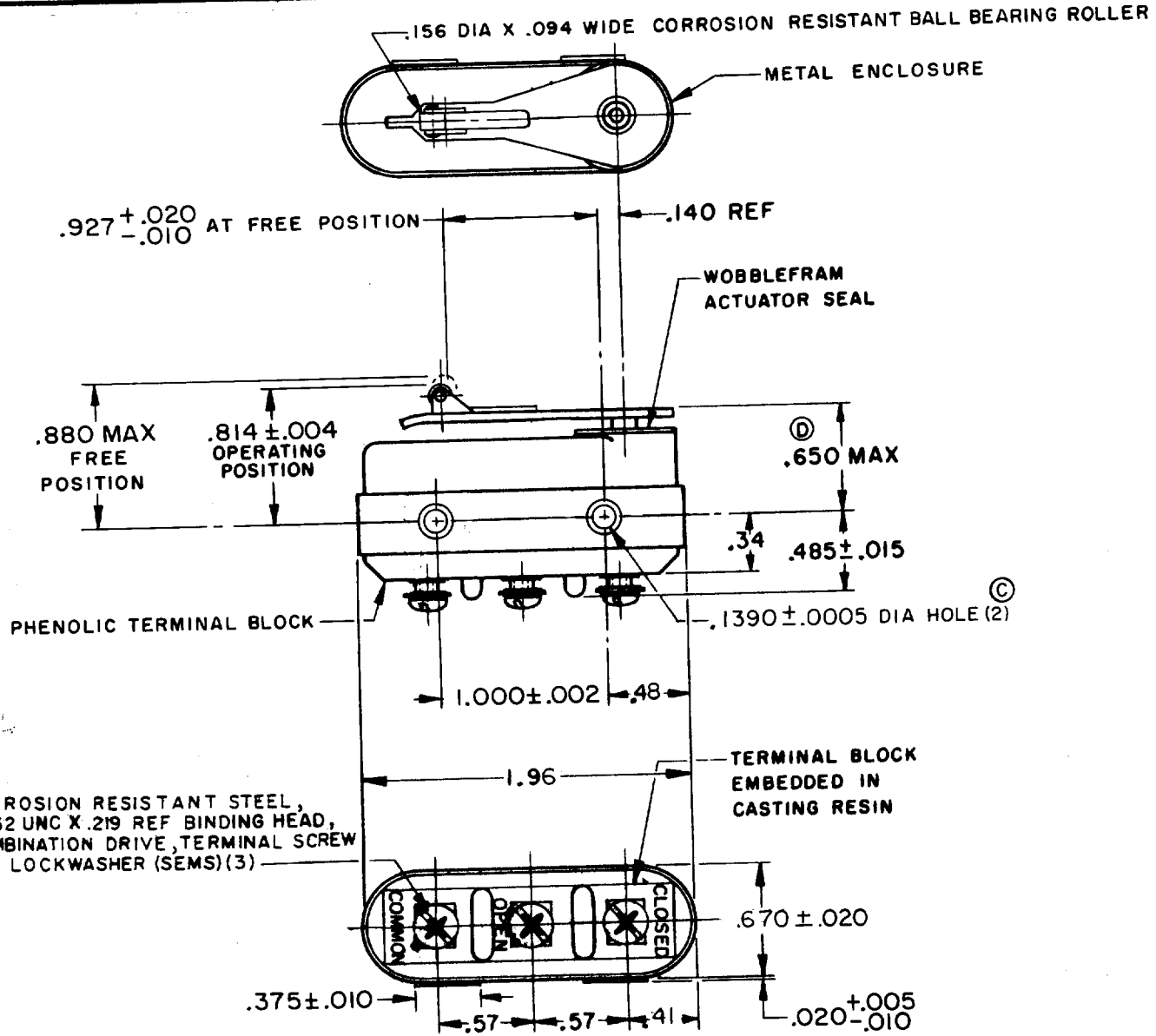
CHECK

CHECK

CHECK

CHECK

CHECK



NOTE -

- 1 - THIS SWITCH FOR RIGHT HAND MOUNTING ONLY
- 2 - THIS SWITCH IS RECOMMENDED FOR USE IN AMBIENT TEMPERATURES FROM MINUS 65° F TO PLUS 250° F
- 3 - .006 MAX ROLLER SLANT ACROSS LENGTH OF ROLLER MEASURED FROM CENTER LINE OF MOUNTING HOLES
- 4 - THE MASS OF THE MOVING CONTACT IS .22 GRAM

THIS DRAWING COVERS A PROPRIETARY ITEM AND IS THE PROPERTY OF MICRO SWITCH, A DIVISION OF MINNEAPOLIS-HONEYWELL REGULATOR CO. THIS DRAWING IS NOT TO BE COPIED OR USED WITHOUT THE APPROVAL OF MICRO SWITCH.

CHARACTERISTICS		ELECTRICAL DATA			SCALE FULL
OPERATING FORCE	-----10-22 OZ	CONTACT ARRANGEMENT S P D T			DO NOT SCALE PRINT
RELEASE FORCE	-----4 OZ MIN	LINE VOLTAGE	INDUCTIVE LOAD	RESISTIVE LOAD	UNLESS OTHERWISE SPECIFIED DIMENSIONS ARE IN INCHES TOLERANCES ARE: ONE PLACE (.0) \pm .030 TWO PLACE (.00) \pm .015 THREE PLACE (.000) \pm .008 ANGLES \pm
DIFFERENTIAL TRAVEL	-----0.013 MAX	28 V.D.C.	5 AMP.	15 AMP.	
OVERTRAVEL	-----0.035-.047				
WEIGHT 1.9 OZ MAX					

FO-50378

DRAWN
O M W 17 APR 61