

**MICRO SWITCH**

A DIVISION OF MINNEAPOLIS-HONEYWELL REGULATOR COMPANY  
 PROSPERITY, ILLINOIS  
 FED. MFR. CODE 91929

**SWITCH - BASIC**

(M) IHS38  
 ISSUE 3

REPLACES

RELEASE NO.

CHECK

CHECK

CHECK

CHECK

RE R 12 JAN 60

IHS38

M

DRAWING NUMBER

DOM

ISSUE 13

REVISIONS

A CO14269  
 RER 12 JAN 60

B CO14585  
 MRF 28 DEC 60

C CO15761  
 OMW 3 APR 61

D CO16599  
 DWV 11 JAN 62

E CO16599  
 LMH 8 FEB 63

F CO55162-J  
 CJH 20 JUN 65

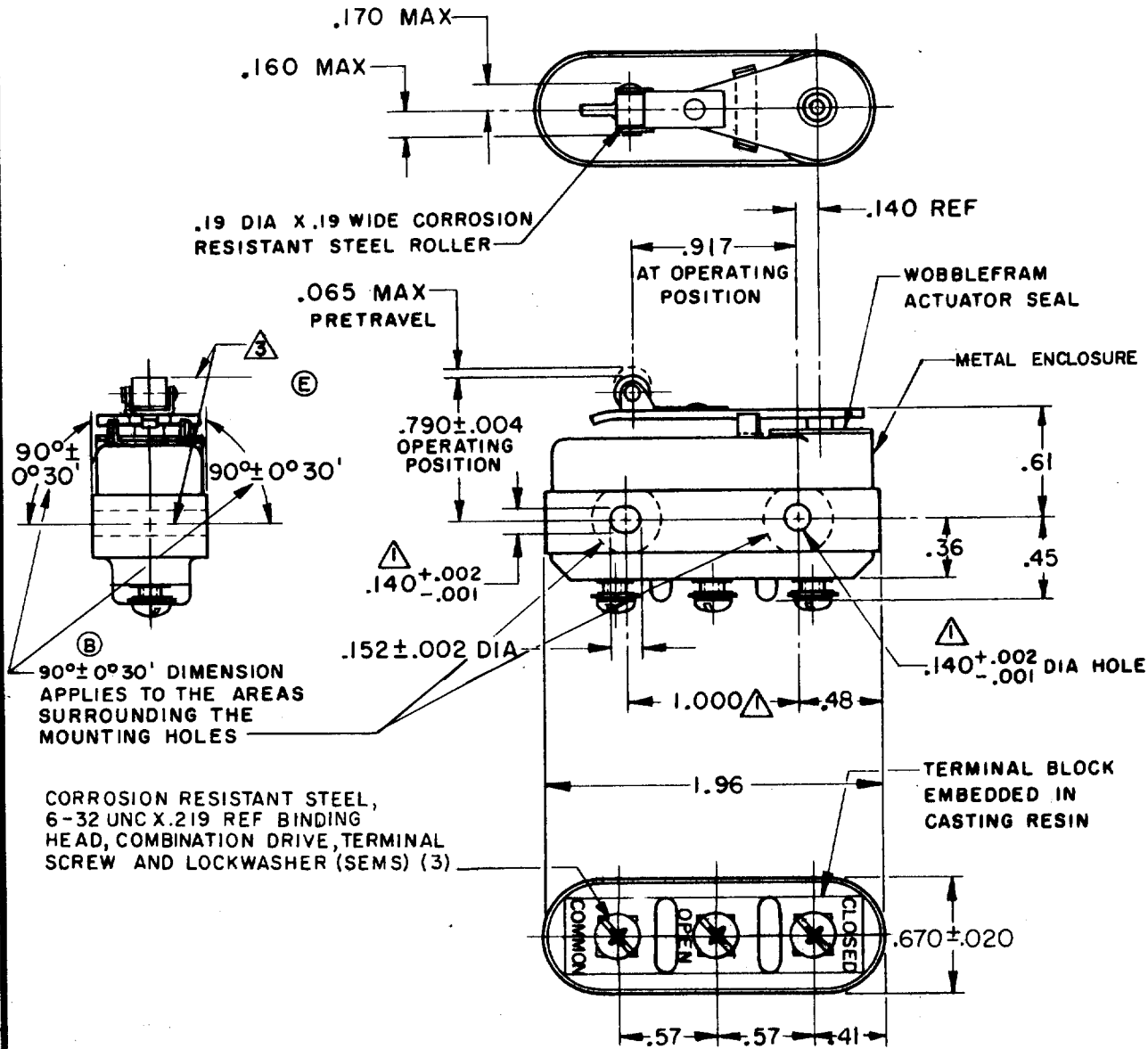
G CO58121  
 TRF 27 AUG 65

H CO65768  
 TSK 12 JUN 69

J CO-6043  
 MAM 20 SEP 69

K CO 76375  
 WES 31 AUG 93

FC-50378



CORROSION RESISTANT STEEL,  
 6-32 UNC X .219 REF BINDING  
 HEAD, COMBINATION DRIVE, TERMINAL  
 SCREW AND LOCKWASHER (SEMS) (3)

90° ± 0°30' DIMENSION  
 APPLIES TO THE AREAS  
 SURROUNDING THE  
 MOUNTING HOLES

- ▲ MOUNTING HOLES WILL ACCEPT PINS OR SCREWS OF .139 MAX DIA ON 1.000 ± .002 CENTERS
- 2 - SWITCH SIDES SUPPORTED AT MOUNTING HOLES BY RIGID INSERTS
- ▲ ROLLER IS PARALLEL TO PLANE OF MTG HOLES WITHIN .015 PER INCH
- ③ 4 - FOR USE IN AMBIENT TEMPERATURE RANGE FROM MINUS 65° TO PLUS 250° F

THIS DRAWING COVERS A PROPRIETARY ITEM AND IS THE PROPERTY OF MICRO SWITCH, A DIVISION OF MINNEAPOLIS-HONEYWELL REGULATOR CO. THIS DRAWING IS NOT TO BE COPIED OR USED WITHOUT THE APPROVAL OF MICRO SWITCH.

CHARACTERISTICS	ELECTRICAL DATA			SCALE FULL
OPERATING FORCE ----- 10-22 OZ	CONTACT ARRANGEMENT S P D T			DO NOT SCALE PRINT
RELEASE FORCE ----- 4 OZ MIN	LINE VOLTAGE	INDUCTIVE LOAD	RESISTIVE LOAD	UNLESS OTHERWISE SPECIFIED DIMENSIONS ARE IN INCHES
DIFFERENTIAL TRAVEL ----- .013 MAX	28 V.D.C.	5 AMP	15 AMP	<b>TOLERANCES ARE:</b>
OVERTRAVEL ----- .028 MIN				ONE PLACE (.0) ±.030
				TWO PLACE (.00) ±.015
				THREE PLACE (.000) ±.005
				ANGLES ±
				WEIGHT 1.9 OZ MAX ③