

MICRO SWITCH

FREEPORT ILLINOIS, U.S.A
A DIVISION OF HONEYWELL

FED. MFG. CODE 91929

SWITCH - BASIC

CATALOG LISTING

ISE119

ISE119
PAGE 1 OF 1

M

DRAWING NUMBER
23

ISSUE
23

CHECK

REVISIONS
A PR-15159
JAS
24 OCT 86
B C095210
DLM
25 MAY 99

CHECK

CHECK

CHECK

CHECK

CHECK

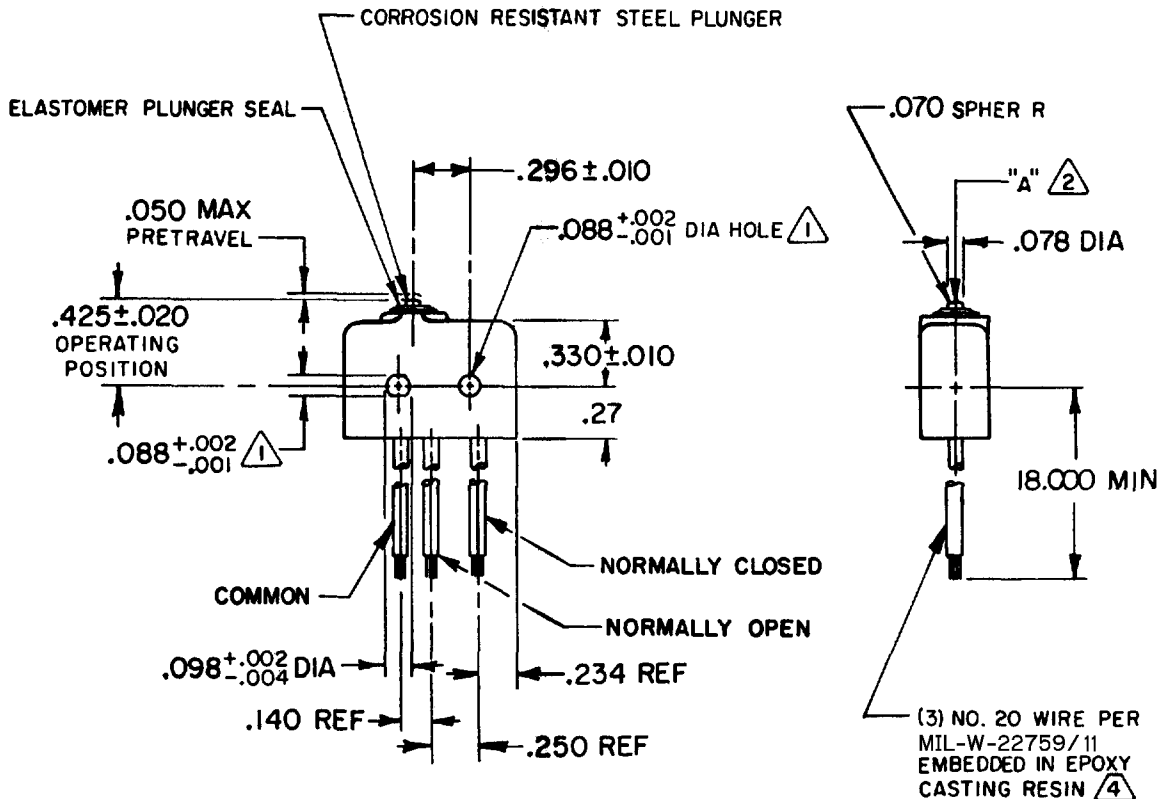
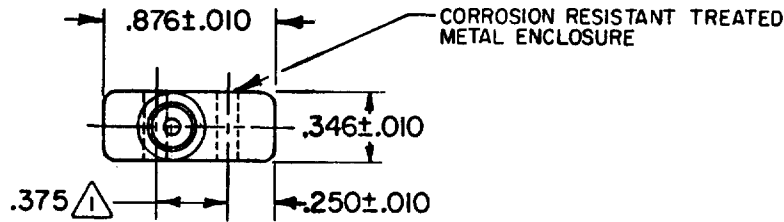
CHECK

CHECK

CHECK

FORMITEK
FO-52848-A

REPLACES
RELEASE NO. PR-15159
CHECK
NOV 86
4
J A S 24 OCT 86
DRAWN

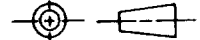


NOTES

- ① MOUNTING HOLES WILL ACCEPT .087 MAX DIA PINS OR SCREWS ON .375±.002 CENTERS
- ② ACTUATION IN LINE WITH ARROW "A" IS RECOMMENDED
- ③ WEIGHT OF SWITCH ONLY IS .26 OZ MAX WEIGHT OF SWITCH WITH WIRE LEADS IS .65 OZ MAX
- 4 - BASIC SWITCH HAS 24K SOLID GOLD CONTACT MATERIAL

THIS DRAWING COVERS A PROPRIETARY ITEM AND IS THE PROPERTY OF MICRO SWITCH, A DIVISION OF HONEYWELL. THIS DRAWING IS NOT TO BE COPIED OR USED WITHOUT THE APPROVAL OF MICRO SWITCH.

THIRD ANGLE PROJECTION



CHARACTERISTICS

OPERATING FORCE-----5-17 OZ
RELEASE FORCE-----4 OZ MIN
RELEASE TRAVEL-----.004 MIN
DIFFERENTIAL TRAVEL-----.004 MAX
OVERTRAVEL-----.003 MIN

ELECTRICAL DATA

CONTACT ARRANGEMENT
S P D T
10 VDC ----- 0.5 AMP
30 VOLTS DC RATING
INDUCTIVE-----SEA LEVEL-----1/2 AMP
50,000 FT-----1/2 AMP
RESISTIVE-----SEA LEVEL-----1 AMP
50,000 FT-----1 AMP
MAXIMUM INRUSH-----2 AMP

SCALE FULL

DO NOT SCALE PRINT

TOLERANCES

APPLY TO DESIGN UNITS. CONVERSIONS ARE ONLY FOR REFERENCE. UNLESS NOTED, TOLERANCES ARE Z

DIM.	TOL.	DIM.	TOL.
NO PLACES	X	1/04	
ONE PLACE	X,X	0.4/018	X X 0.8/03
TWO PLACES	X,XX	0.15/006	X XX 0.38/015
THREE PLACES	X,XXX		X XXX 0.13/005

DESIGN UNITS SI METRIC

US CUSTOMARY

WEIGHT ③