

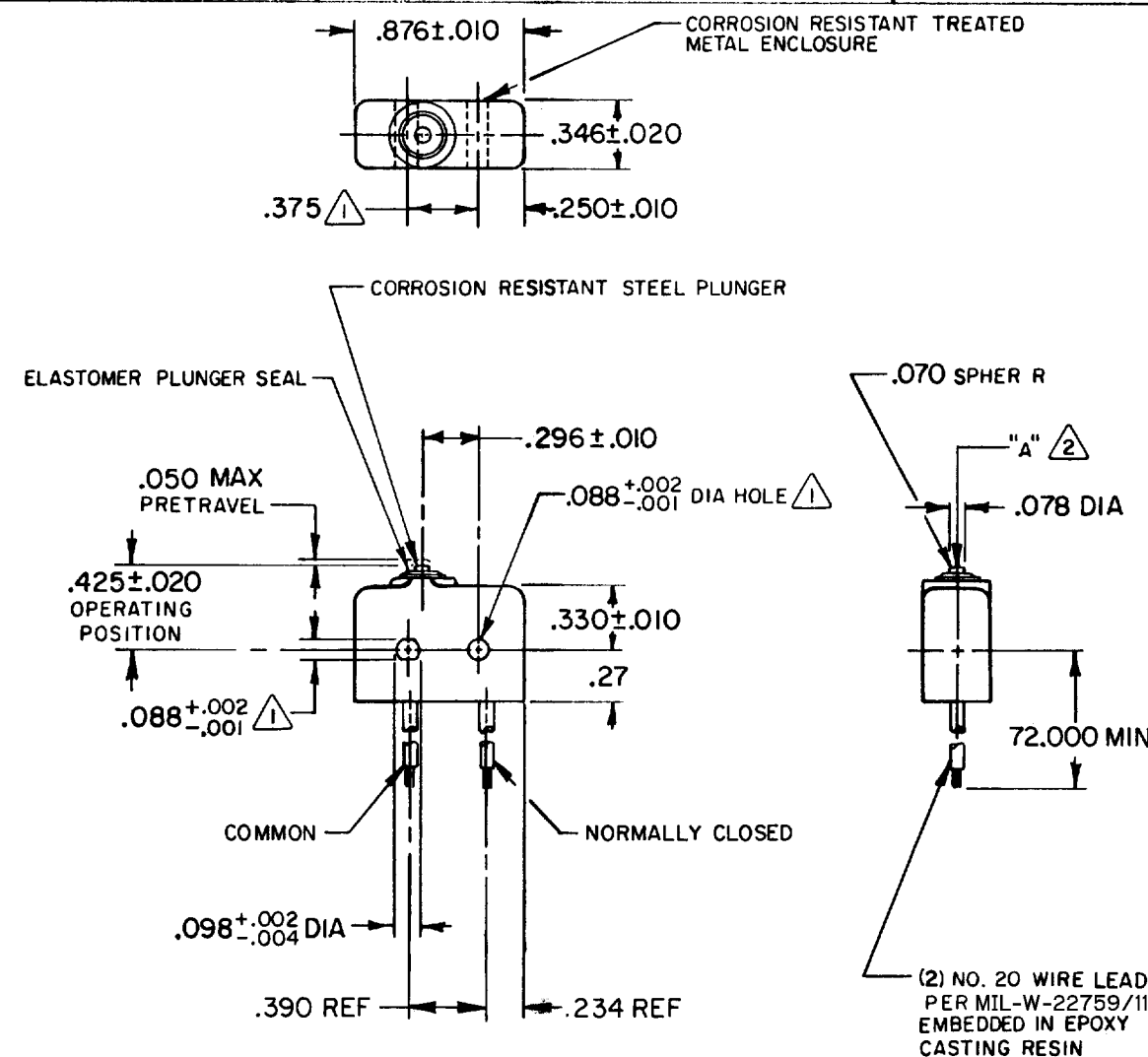
MICRO SWITCH

FREEPORT ILLINOIS, U.S.A
A DIVISION OF HONEYWELL
FED. MFG. CODE 91929

SWITCH - BASIC

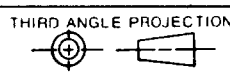
CATALOG LISTING
ISE 2-6

FORMTEK
 FO-52848-A
 DRAWN
 KAG 26 JUL 82
 CHECK
 JEE 5 AUG 82
 CHECK
 5 AUG 82
 REVISIONS
 A C051463
 KAG
 26 JUL 82
 B C057041A
 CJH
 MAR 85
 C C094274
 DLM
 MAR 99
 ISSUE
 X 8
 9
 DRAWING NUMBER
 M
 ISE 2-6
 PAGE 1 OF 1
 REPLACES
 RELEASE NO.



- NOTES**
- 1 MOUNTING HOLES WILL ACCEPT .087 MAX DIA PINS OR SCREWS ON .375±.002 CENTERS
 - 2 ACTUATION IN LINE WITH ARROW "A" IS RECOMMENDED
 - 3 WEIGHT OF SWITCH ONLY IS .26 OZ MAX
WEIGHT OF SWITCH WITH WIRE LEADS IS 1.72 OZ MAX

THIS DRAWING COVERS A PROPRIETARY ITEM AND IS THE PROPERTY OF MICRO SWITCH, A DIVISION OF HONEYWELL. THIS DRAWING IS NOT TO BE COPIED OR USED WITHOUT THE APPROVAL OF MICRO SWITCH.



CHARACTERISTICS	
OPERATING FORCE	5-17 OZ
RELEASE FORCE	4 OZ MIN
RELEASE TRAVEL	.004 MIN
DIFFERENTIAL TRAVEL	.004 MAX
OVERTRAVEL	.003 MIN

ELECTRICAL DATA	
CONTACT ARRANGEMENT S P N C	
250 VAC	5 AMP
30 VOLTS DC RATING	
INDUCTIVE	SEA LEVEL-- 3 AMP
	50,000 FT-- 2.5 AMP
RESISTIVE	SEA LEVEL-- 5 AMP
	50,000 FT-- 5 AMP
MAXIMUM INRUSH	24 AMP

SCALE FULL			
DO NOT SCALE PRINT			
TOLERANCES			
APPLY TO DESIGN UNITS. CONVERSIONS ARE ONLY FOR REFERENCE. UNLESS NOTED, TOLERANCES ARE ±			
DIM.	TOL.	DIM.	TOL.
mm	mm/in	in	mm/in
NO PLACES	X	1/04	X X
ONE PLACE	X,X	0.4/018	X X X
TWO PLACES	X,X,X	0.16/008	X X X X
THREE PLACES	X,X,X,X		X X X X X
ANGLES			
DESIGN UNITS		US CUSTOMARY	
SI METRIC <input type="checkbox"/>		US CUSTOMARY <input checked="" type="checkbox"/>	
WEIGHT 3			