

MICRO SWITCH

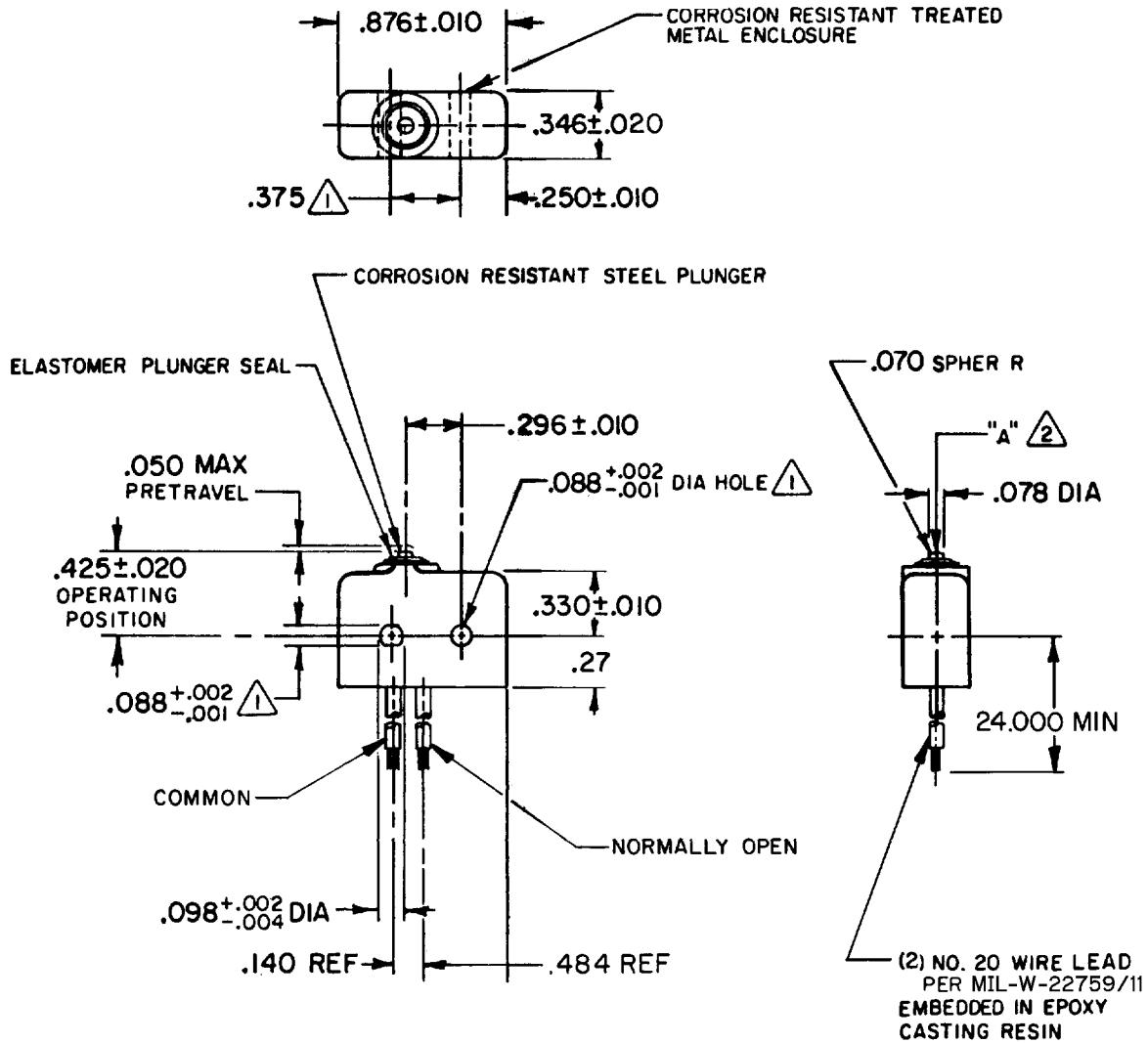
FREERPORT ILLINOIS, U.S.A
A DIVISION OF HONEYWELL
FED. MFG. CODE 91929

SWITCH - BASIC

CATALOG LISTING

ISE3-2

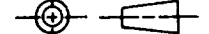
ISE3-2
 PAGE 1 OF 1
 M
 DRAWING NUMBER
 X
 ISSUE
 34
 3
 REVISIONS
 A C056103
 CJH NOV 84
 B C057041A
 CJH MAR 85
 C C094274
 DLM MAR 99
 FORMTEK
 FO-32848-A
 DRAWN
 CJH 2 JUN 83
 CHECKED
 JUN 83
 CHECK
 JUN 83
 RELEASE NO. PR-12204
 REPLACES



- NOTES**
- 1 MOUNTING HOLES WILL ACCEPT .087 MAX DIA PINS OR SCREWS ON .375 ± .002 CENTERS
 - 2 ACTUATION IN LINE WITH ARROW "A" IS RECOMMENDED
 - 3 WEIGHT OF SWITCH ONLY IS .26 OZ MAX; WEIGHT OF SWITCH WITH WIRE LEADS IS .65 OZ MAX

THIS DRAWING COVERS A PROPRIETARY ITEM AND IS THE PROPERTY OF MICRO SWITCH, A DIVISION OF HONEYWELL. THIS DRAWING IS NOT TO BE COPIED OR USED WITHOUT THE APPROVAL OF MICRO SWITCH.

THIRD ANGLE PROJECTION



CHARACTERISTICS

OPERATING FORCE — — — — — 5-17 OZ

RELEASE FORCE — — — — — 4 OZ MIN

RELEASE TRAVEL — — — — — .004 MIN

DIFFERENTIAL TRAVEL — — — .004 MAX

OVERTRAVEL — — — — — .003 MIN

ELECTRICAL DATA

CONTACT ARRANGEMENT
S P N O

250 VAC — — — — — 5 AMP

30 VOLTS DC RATING

INDUCTIVE — — — — — SEA LEVEL — 3 AMP
50,000 FT — 2.5 AMP

RESISTIVE — — — — — SEA LEVEL — 5 AMP
50,000 FT — 5 AMP

MAXIMUM INRUSH — — — — — 24 AMP

SCALE FULL

DO NOT SCALE PRINT

TOLERANCES

APPLY TO DESIGN UNITS. CONVERSIONS ARE ONLY FOR REFERENCE. UNLESS NOTED, TOLERANCES ARE:

	DIM. mm	TOL. mm/in	DIM. in	TOL. mm/in
NO PLACES	X	1/64	X, X	0.01/00
ONE PLACE	X, X	0.01/016	X, XX	0.001/016
TWO PLACES	X, XX	0.001/008	X, XXX	0.0001/008
THREE PLACES	X, XXX			
ANGLES				

DESIGN UNITS SI METRIC US CUSTOMARY

WEIGHT 3