

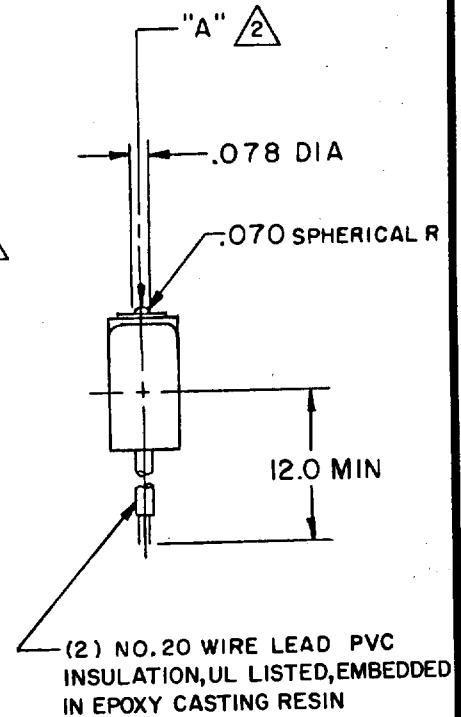
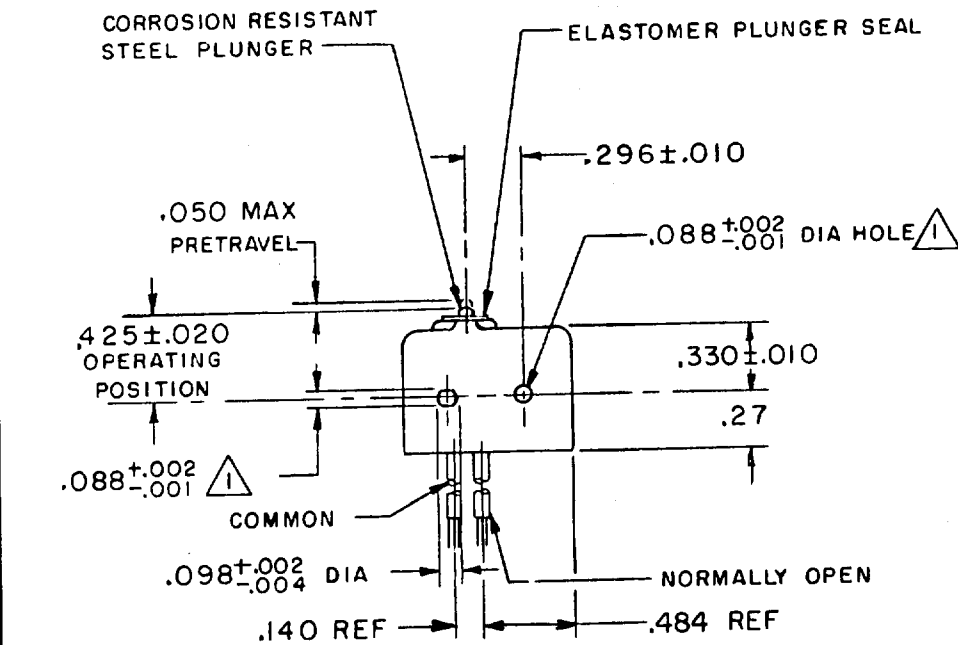
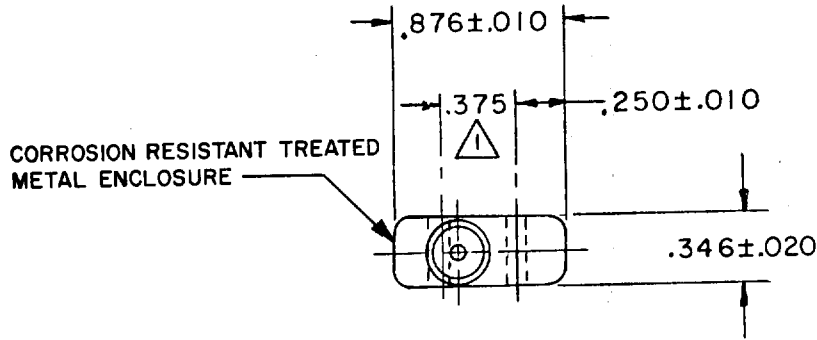
MICRO SWITCH

FREEPORT ILLINOIS, U.S.A
A DIVISION OF HONEYWELL
FED. MFG. CODE 91929

SWITCH-BASIC

CATALOG LISTING
ISE65

ISE65
 M
 X2
 .ISSUE
 DRAWING NUMBER
 REVISIONS
 A C057041A
 21 CJH
 MAR 85
 CHECK
 25 JAN 77
 DRAWN
 K P K124 JAN 77
 CHECKED
 DAW
 FO-52848-A



- NOTE -
- 1 MOUNTING HOLES WILL ACCEPT .087 MAX DIA PINS OR SCREWS ON .375±.002 CENTERS
 - 2 ACTUATION IN LINE WITH ARROW "A" IS RECOMMENDED
 - 3 WEIGHT OF SWITCH ONLY IS .26 OZ MAX, WEIGHT OF SWITCH WITH WIRE LEADS IS .40 OZ MAX
 - 4 - TEMPERATURE RATING +14°F TO +221°F

THIS DRAWING COVERS A PROPRIETARY ITEM AND IS THE PROPERTY OF MICRO SWITCH, A DIVISION OF HONEYWELL. THIS DRAWING IS NOT TO BE COPIED OR USED WITHOUT THE APPROVAL OF MICRO SWITCH.

THIRD ANGLE PROJECTION

CHARACTERISTICS

OPERATING FORCE ----- 5-17 OZ
 RELEASE FORCE ----- 4 OZ MIN
 RELEASE TRAVEL ----- .004 MIN
 DIFFERENTIAL TRAVEL ----- .004 MAX
 OVERTRAVEL ----- .003 MIN

ELECTRICAL DATA

CONTACT ARRANGEMENT
S P N O

250 VAC ----- 5 AMP

VOLTS DC RATING

INDUCTIVE ----- SEA LEVEL --- 3 AMP
 50,000 FT --- 2.5 AMP

RESISTIVE ----- SEA LEVEL --- 5 AMP
 50,000 FT --- 5 AMP

MAXIMUM INRUSH ----- 24 AMP

SCALE FULL

DO NOT SCALE PRINT

TOLERANCES

APPLY TO DESIGN UNITS. CONVERSIONS ARE ONLY FOR REFERENCE. UNLESS NOTED, TOLERANCES ARE ±

	DIM. mm	TOL. mm/in	DIM. in	TOL. mm/in
NO PLACES	X	1/64	X X	0.01/0.3
ONE PLACE	X, X	0.47/0.18	X X X	0.38/0.15
TWO PLACES	X, XX	0.157/0.06	X X X X	0.13/0.05
THREE PLACES	X, XXX		X X X X X	
ANGLES				

DESIGN UNITS SI METRIC US CUSTOMARY

WEIGHT **3**