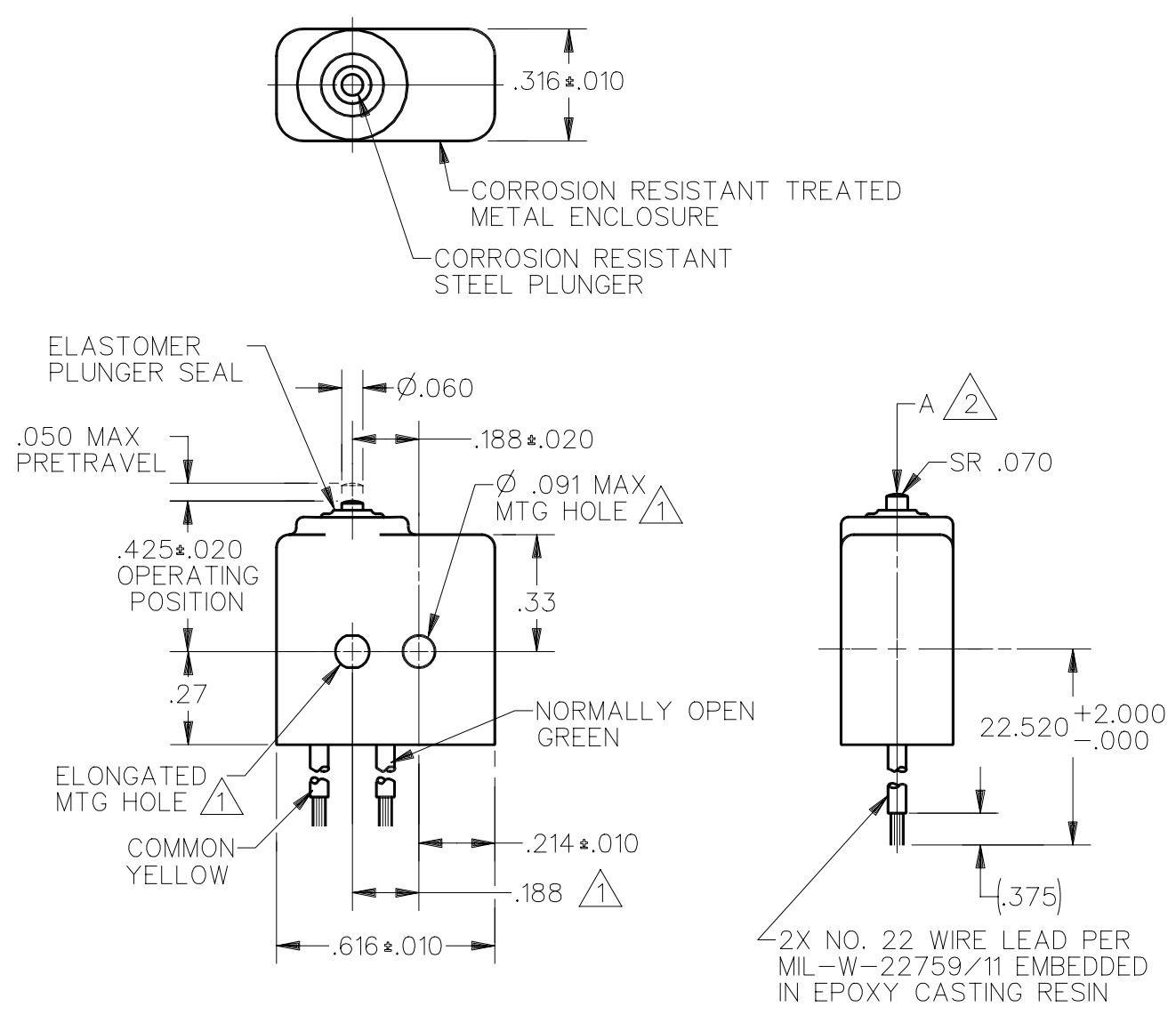
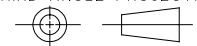


CATALOG LISTING  
 1XE24-2  
 PAGE 1 OF 1  
 ISSUE 5  
 REVISIONS  
 A PR-20839 MAM 5 NOV 93  
 B CO-77283 JAL 23 MAY 94  
 C CO-80793 K D R 11 APR 95  
 CHECK  
 W L S  
 CHECK  
 8 MAY 93  
 CHECK  
 5 NOV 93  
 DRAWN  
 DDM/CAD



THIS DRAWING COVERS A PROPRIETARY ITEM AND IS THE PROPERTY OF MICRO SWITCH, A DIVISION OF HONEYWELL. THIS DRAWING IS NOT TO BE COPIED OR USED WITHOUT THE APPROVAL OF MICRO SWITCH.

THIRD ANGLE PROJECTION



| CHARACTERISTICS                    | ELECTRICAL DATA                       | SCALE 2:1  | DO NOT SCALE PRINT |
|------------------------------------|---------------------------------------|--|--------------------|
| OPERATING FORCE — — — — 5-17 OZ    | CONTACT ARRANGEMENT<br>S P N O        | <b>UNLESS OTHERWISE SPECIFIED TOLERANCES ARE</b><br>ONE PLACE (.0) $\pm .030$<br>TWO PLACE (.00) $\pm .015$<br>THREE PLACE (.000) $\pm .005$<br>ANGLES $\pm$ | WEIGHT ③           |
| RELEASE FORCE — — — — 4 OZ MIN     | 28 VOLTS DC RATING                    |  |                    |
| RELEASE TRAVEL — — — — .004 MIN    | INDUCTIVE — — — SEA LEVEL — — — 4 AMP |  |                    |
| DIFFERENTIAL TRAVEL — — — .005 MAX | 50,000 FT — — — 2.5 AMP               |  |                    |
| OVERTRAVEL — — — — .004 MIN        | RESISTIVE — — — SEA LEVEL — — — 7 AMP |  |                    |
|                                    | 50,000 FT — — — 7 AMP                 |  |                    |
|                                    | 115 VOLTS 400 CYCLES — — — SEA LEVEL  |  |                    |
|                                    | RESISTIVE — — — — — 7 AMP             |  |                    |
|                                    | INDUCTIVE — — — — — 4 AMP             |  |                    |
|                                    | LAMP — — — — — 1 AMP                  |  |                    |
|                                    | MOTOR — — — — — 1.5 AMP               |  |                    |