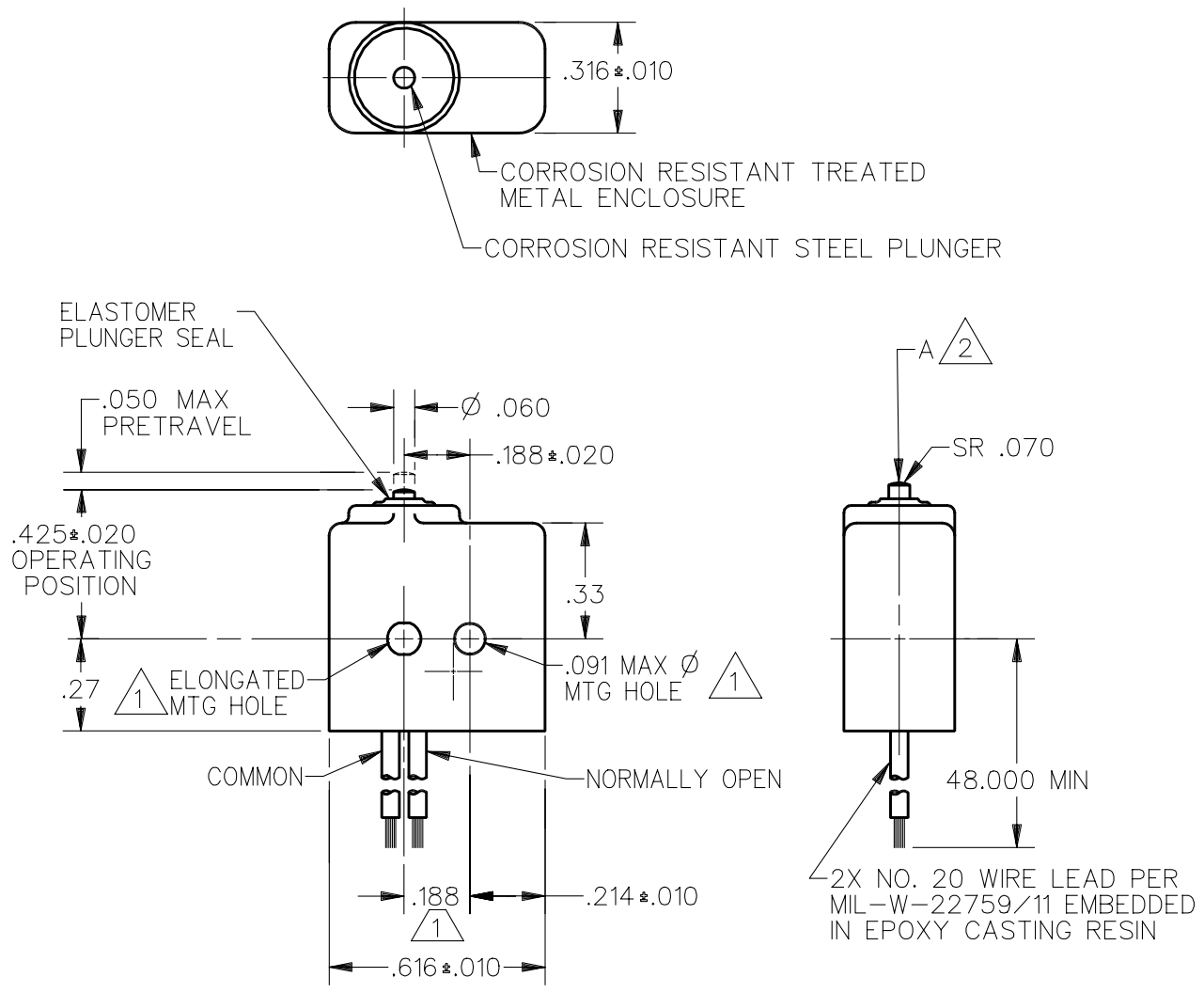


CATALOG LISTING
 PAGE 1 OF 1
 ISSUE 2
 REVISIONS
 A CO-1
 94274
 J J A
 23 MAR 99
 DDM/CAD
 DRAWN
 T S M
 4 OCT 91
 CHECK
 D A W
 7 OCT 91
 CHECK
 1XE3-4
 REPLACES
 RELEASE NO. PR-19628

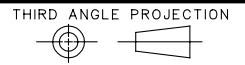


NOTES

- ① MOUNTING HOLES WILL ACCEPT $.087 \text{ MAX } \phi$ PINS OR SCREWS ON $.188 \pm .002$ CENTERS
- ② ACTUATION IN LINE WITH ARROW "A" IS RECOMMENDED
- ③ WEIGHT OF SWITCH ONLY IS $.16 \text{ OZ MAX}$ WEIGHT OF SWITCH WITH WIRE LEADS IS $.90 \text{ OZ MAX}$

ANSI Y14.5M-1982 APPLIES

THIS DRAWING COVERS A PROPRIETARY ITEM AND IS THE PROPERTY OF MICRO SWITCH, A DIVISION OF HONEYWELL. THIS DRAWING IS NOT TO BE COPIED OR USED WITHOUT THE APPROVAL OF MICRO SWITCH.



CHARACTERISTICS	ELECTRICAL DATA	SCALE 2:1	DO NOT SCALE PRINT
OPERATING FORCE — — — — 5-17 OZ	CONTACT ARRANGEMENT S P N O	UNLESS OTHERWISE SPECIFIED TOLERANCES ARE ONE PLACE (.0) ±.030 TWO PLACE (.00) ±.015 THREE PLACE (.000) ±.005 ANGLES ± WEIGHT ③	
RELEASE FORCE — — — — 4 OZ MIN	28 VOLTS DC RATING		
RELEASE TRAVEL — — — — .004 MIN	INDUCTIVE — — — SEA LEVEL — — — 4 AMP		
DIFFERENTIAL TRAVEL — — — .005 MAX	50,000 FT — 2.5 AMP		
OVERTRAVEL — — — — .004 MIN	RESISTIVE — — — SEA LEVEL — — — 7 AMP		
	50,000 FT — 7 AMP		
	MAXIMUM INRUSH — — — — 24 AMP		