

MICRO SWITCH

FREEMONT ILLINOIS, U.S.A.
A DIVISION OF HONEYWELL
FED. MFG. CODE 91929

SWITCH-BASIC

CATALOG LISTING

IXE401-6

IXE401-6

PAGE 1 OF 1

REPLACES

RELEASE NO. PR-4770

DRAWING NUMBER

M

5

ISSUE

6

CHECK

REVISIONS

A	CO-51463
	KAG
	23 JUL 82
B	CO 57328-A
	WJM
	15 APR 85
C	C094274
	DLM
	16 MAR 99

CHECK

30 JULY 82

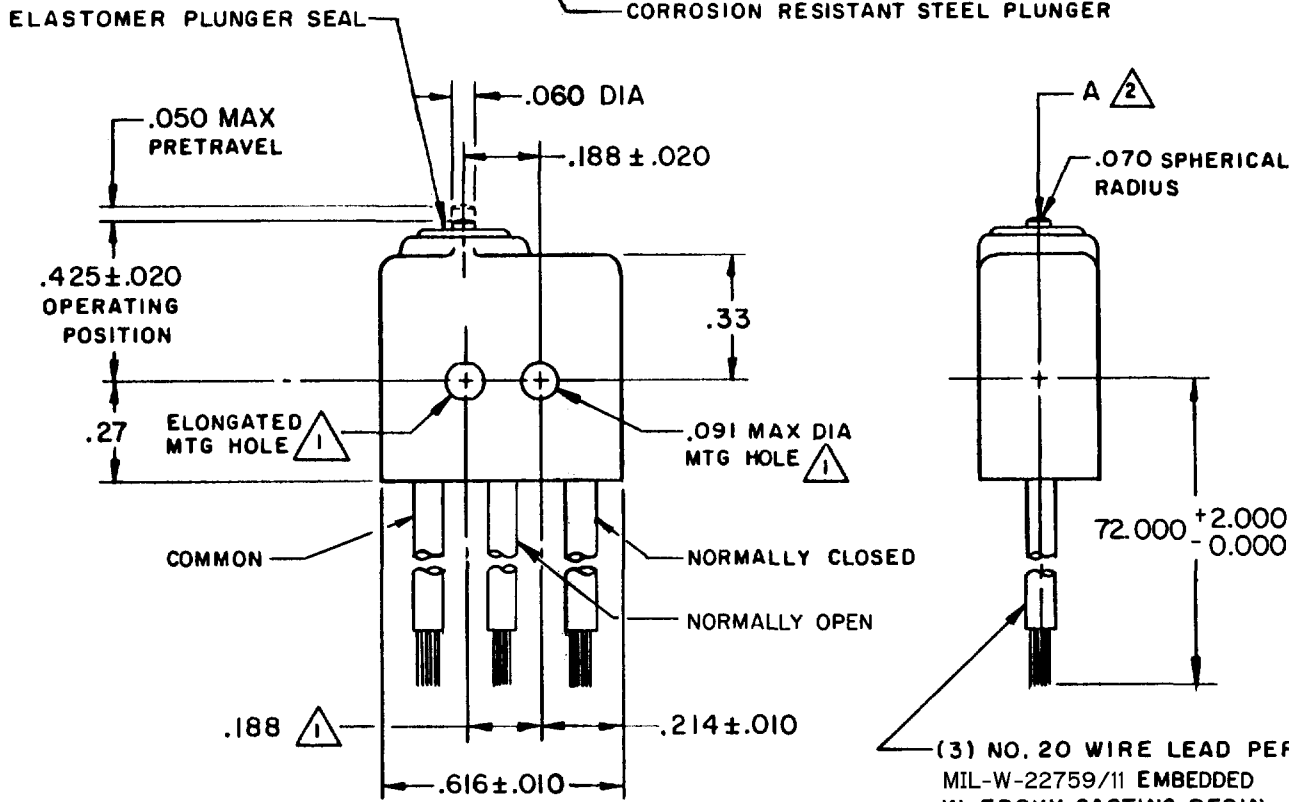
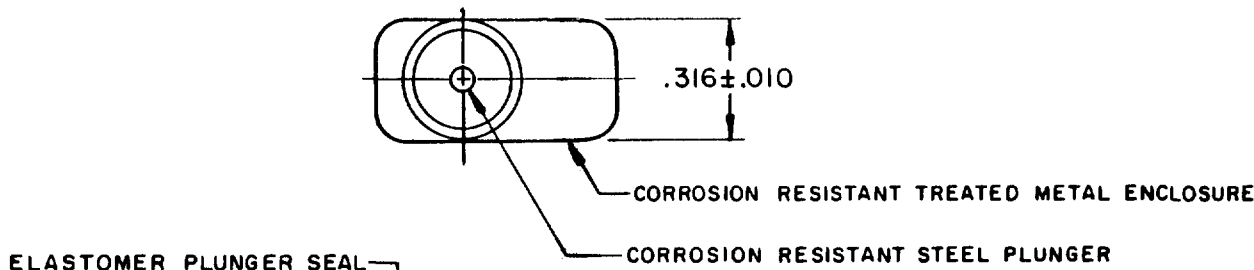
C E B

82 JUL 23

FORMTEK

FO-52848-A

DRAWN

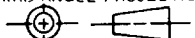


NOTES

- (1) MOUNTING HOLES WILL ACCEPT .087 MAX DIA PINS OR SCREWS ON $.188 \pm .002$ CENTERS
- (2) ACTUATION IN LINE WITH ARROW "A" IS RECOMMENDED
- (3) WEIGHT OF SWITCH ONLY IS .16 OZ MAX. WEIGHT OF SWITCH WITH WIRE LEADS IS 2.23 OZ MAX

THIS DRAWING COVERS A PROPRIETARY ITEM AND IS THE PROPERTY OF MICRO SWITCH, A DIVISION OF HONEYWELL. THIS DRAWING IS NOT TO BE COPIED OR USED WITHOUT THE APPROVAL OF MICRO SWITCH.

THIRD ANGLE PROJECTION



CHARACTERISTICS

OPERATING FORCE ----- 5-17 OZ
RELEASE FORCE ----- 3 OZ MIN
RELEASE TRAVEL ----- .004 MIN
DIFFERENTIAL TRAVEL ----- .005 MAX
OVERTRAVEL ----- .004 MIN

ELECTRICAL DATA

CONTACT ARRANGEMENT
S P D T

28 VDC
INDUCTIVE ----- SEA LEVEL ----- 0.5 AMP
RESISTIVE ----- SEA LEVEL ----- 1.0 AMP

SCALE 2:1

DO NOT SCALE PRINT

TOLERANCES
APPLY TO DESIGN UNITS. CONVERSIONS ARE ONLY FOR REFERENCE. UNLESS NOTED, TOLERANCES ARE ±

	DIM. mm	TOL. mm/in	DIM. in	TOL. mm/in
NO PLACES	X	1/.04	X	X
ONE PLACE	X,X	0.4/.016	X,X	0.8/.015
TWO PLACES	X,X,X	0.16/.006	X,X,X	0.36/.015
THREE PLACES	X,X,X,X		X,X,X,X	0.13/.005

DESIGN UNITS BI METRIC

US CUSTOMARY

WEIGHT (3)