

MICRO SWITCH

FREERPORT ILLINOIS, U.S.A
A DIVISION OF HONEYWELL
FED. MFG. CODE 91929

SWITCH - BASIC

CATALOG LISTING
IXE79-3

MIXE79-3

REPLACES
RELEASE NO. PR-5812

DRAWING
NUMBER

X2

ISSUE

CHECK

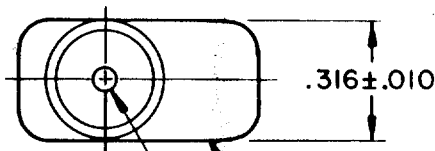
CHECK
29 APRIL 76

CHECK
C E B

CHECK
76 APR 22 R

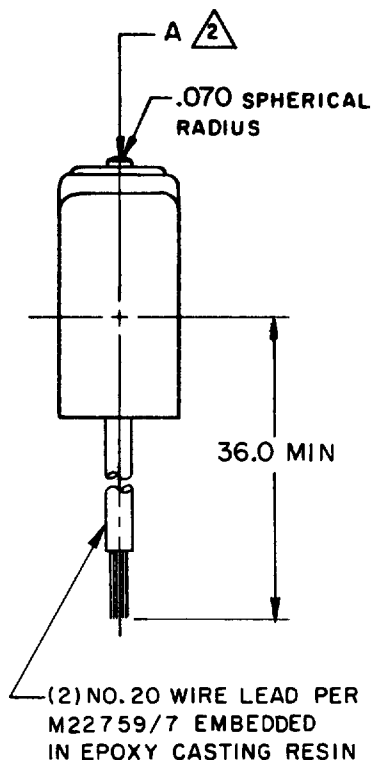
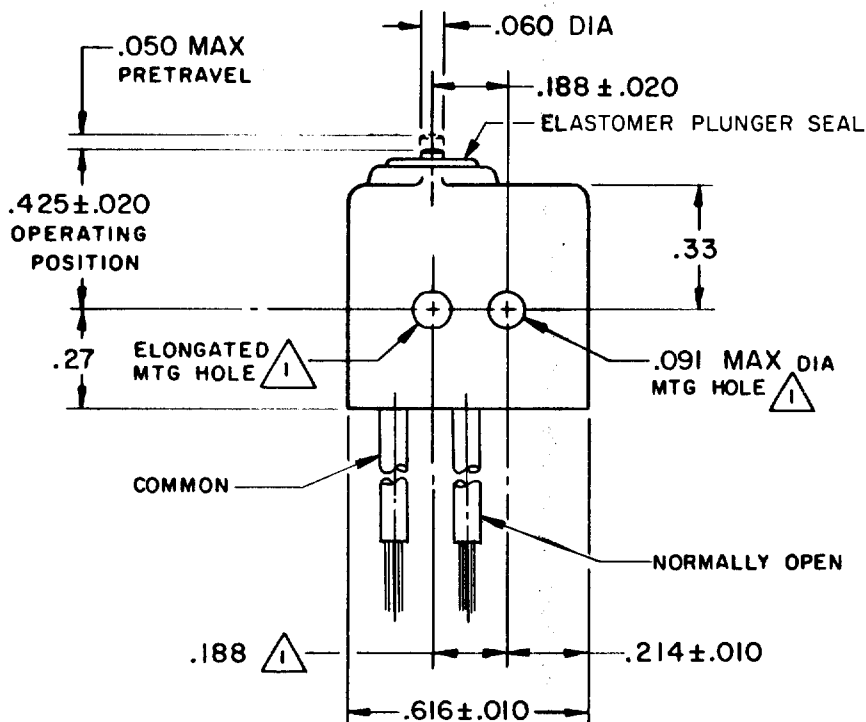
FO-52848-A

DRAWN



CORROSION RESISTANT TREATED METAL ENCLOSURE

CORROSION RESISTANT STEEL PLUNGER

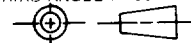


NOTE-

- 1 MOUNTING HOLES WILL ACCEPT .087 MAX DIA PINS OR SCREWS ON .188 ± .002 CENTERS
- 2 ACTUATION IN LINE WITH ARROW "A" IS RECOMMENDED
- 3 WEIGHT OF SWITCH ONLY IS .16 OZ MAX. WEIGHT OF SWITCH WITH WIRE LEADS IS .75 OZ MAX

THIS DRAWING COVERS A PROPRIETARY ITEM AND IS THE PROPERTY OF MICRO SWITCH, A DIVISION OF HONEYWELL. THIS DRAWING IS NOT TO BE COPIED OR USED WITHOUT THE APPROVAL OF MICRO SWITCH.

THIRD ANGLE PROJECTION



CHARACTERISTICS	
OPERATING FORCE	5-17 OZ
RELEASE FORCE	4 OZ MIN
RELEASE TRAVEL	.004 MIN
DIFFERENTIAL TRAVEL	.005 MAX
OVERTRAVEL	.004 MIN

ELECTRICAL DATA	
CONTACT ARRANGEMENT S P N O	
28 VOLTS DC RATING	
INDUCTIVE	SEA LEVEL --- 4 AMP
	50,000 FT --- 2.5 AMP
RESISTIVE	SEA LEVEL --- 7 AMP
	50,000 FT --- 7 AMP
MAXIMUM INRUSH	24 AMP

SCALE 2 TO 1			
DO NOT SCALE PRINT			
TOLERANCES			
APPLY TO DESIGN UNITS. CONVERSIONS ARE ONLY FOR REFERENCE. UNLESS NOTED, TOLERANCES ARE ±			
DIM.	TOL.	DIM.	TOL.
mm	mm/in	in	mm/in
NO PLACES	X	1/.04	
ONE PLACE	X X	0.4/.018	X X 0.8/.03
TWO PLACES	X X X	0.15/.006	X X X 0.387/.015
THREE PLACES	X X X X		X X X X 0.13/.005
ANGLES			
SI METRIC		US CUSTOMARY	
DESIGN UNITS		<input type="checkbox"/> SI METRIC <input checked="" type="checkbox"/> US CUSTOMARY	

WEIGHT **3**