

1XE97

**M**

DRAWING NUMBER

2

ISSUE

REPLACES

RELEASE NO. PR-20069

CHECK

CHECK

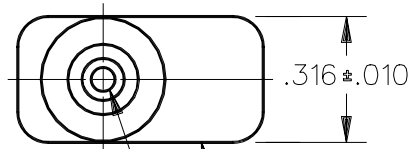
CHECK

CHECK

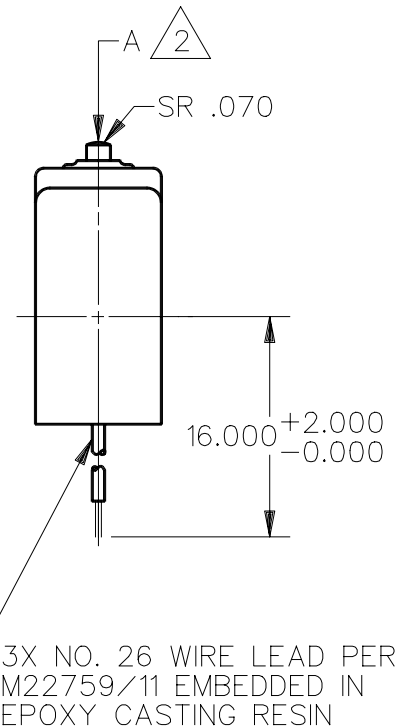
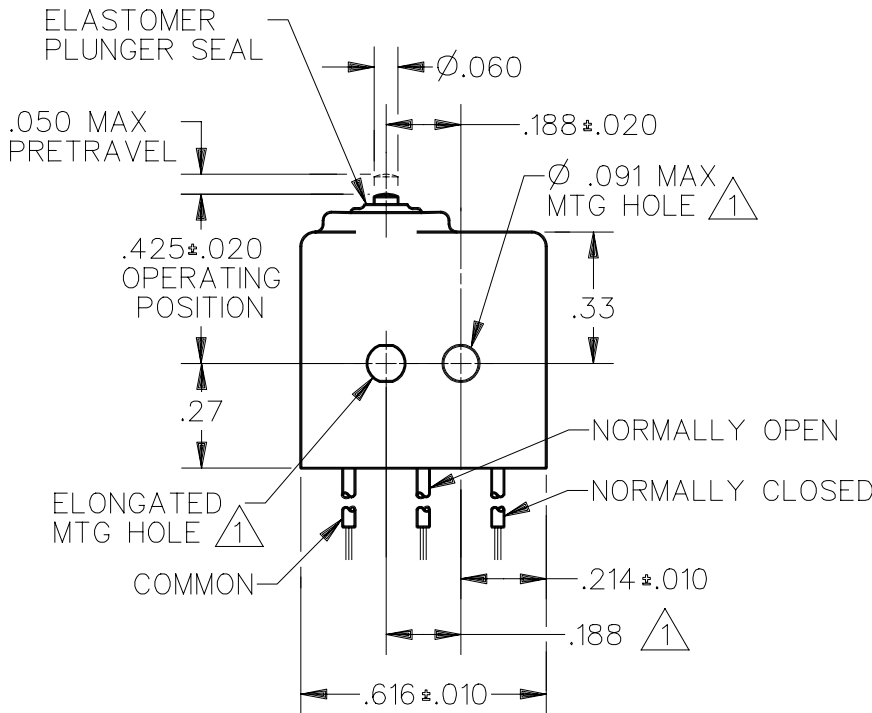
CHECK

REVISIONS

A	PR20069
TSM	11 MAY 92



CORROSION RESISTANT TREATED METAL ENCLOSURE  
CORROSION RESISTANT STEEL PLUNGER

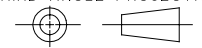


NOTES

- (1) MOUNTING HOLES WILL ACCEPT .087 MAX DIA PINS OR SCREWS ON .188±.002 CENTERS
- (2) ACTUATION IN LINE WITH ARROW "A" IS RECOMMENDED
- (3) WEIGHT OF SWITCH ONLY IS .16 OZ MAX. WEIGHT OF SWITCH WITH WIRE LEADS IS .55 OZ MAX

THIS DRAWING COVERS A PROPRIETARY ITEM AND IS THE PROPERTY OF MICRO SWITCH, A DIVISION OF HONEYWELL. THIS DRAWING IS NOT TO BE COPIED OR USED WITHOUT THE APPROVAL OF MICRO SWITCH.

THIRD ANGLE PROJECTION



CHARACTERISTICS

OPERATING FORCE	5-17 OZ
RELEASE FORCE	4 OZ MIN
RELEASE TRAVEL	.004 MIN
DIFFERENTIAL TRAVEL	.005 MAX
OVERTRAVEL	.004 MIN

ELECTRICAL DATA

CONTACT ARRANGEMENT S P D T	
28 VOLTS DC RATING	
INDUCTIVE	SEA LEVEL --- 4 AMP
	50,000 FT --- 2.5 AMP
RESISTIVE	SEA LEVEL --- 7 AMP
	50,000 FT --- 7 AMP
115 VOLTS 400 CYCLES --- SEA LEVEL	
RESISTIVE	--- 7 AMP
INDUCTIVE	--- 4 AMP
LAMP	--- 1 AMP
MOTOR	--- 1.5 AMP

SCALE 2:1

DO NOT SCALE PRINT

<b>UNLESS OTHERWISE SPECIFIED TOLERANCES ARE</b>		
ONE PLACE (.0)		±.030
TWO PLACE (.00)		±.015
THREE PLACE (.000)		±.005
ANGLES		±

WEIGHT (3)

DDM/CAD

DRAWN

T S M 11 MAY 92