

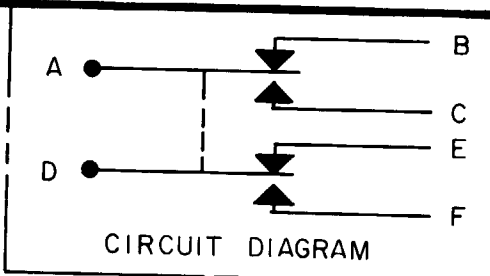
MICRO SWITCH

FREEPORT, ILLINOIS, U.S.A.
A DIVISION OF HONEYWELL

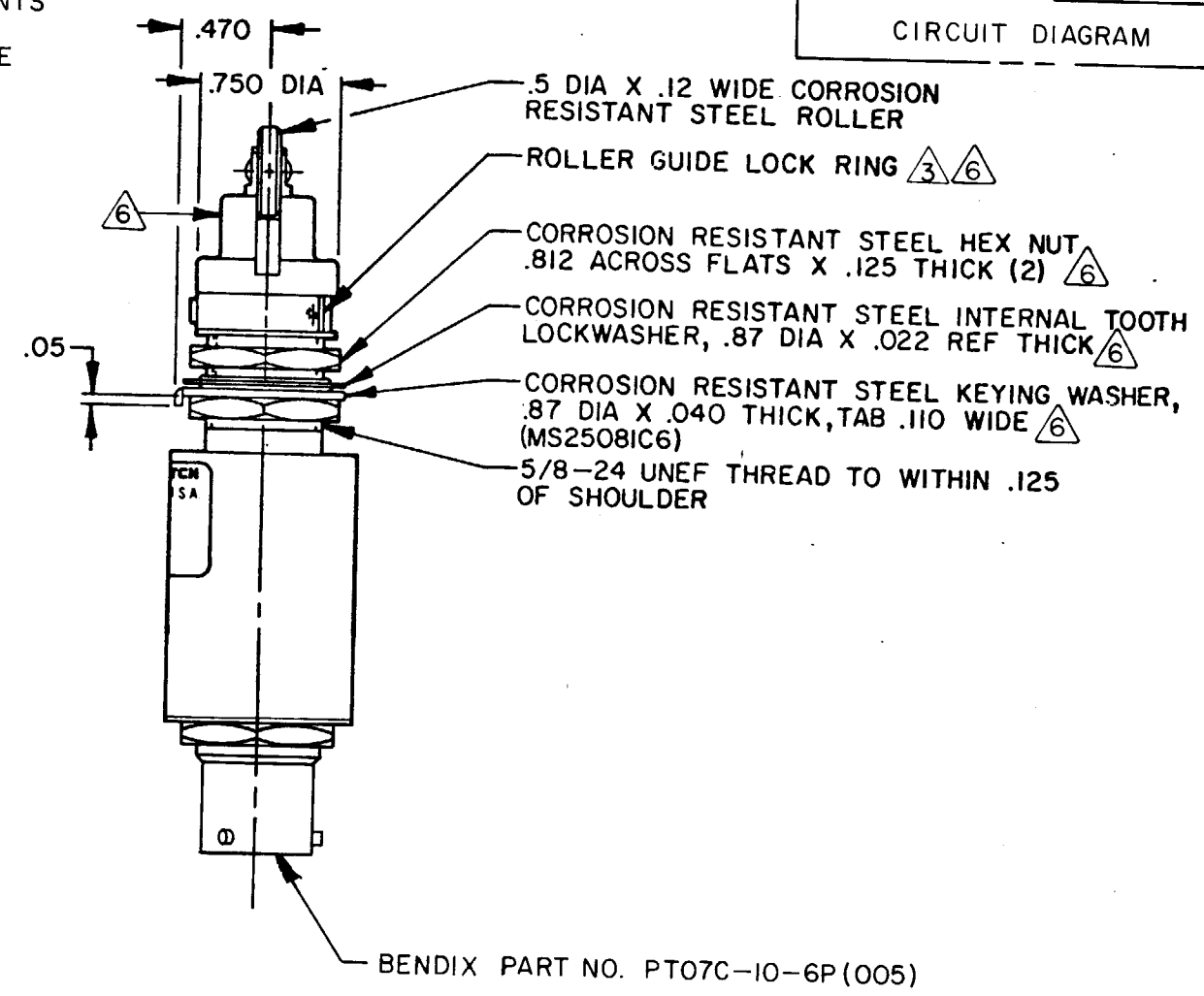
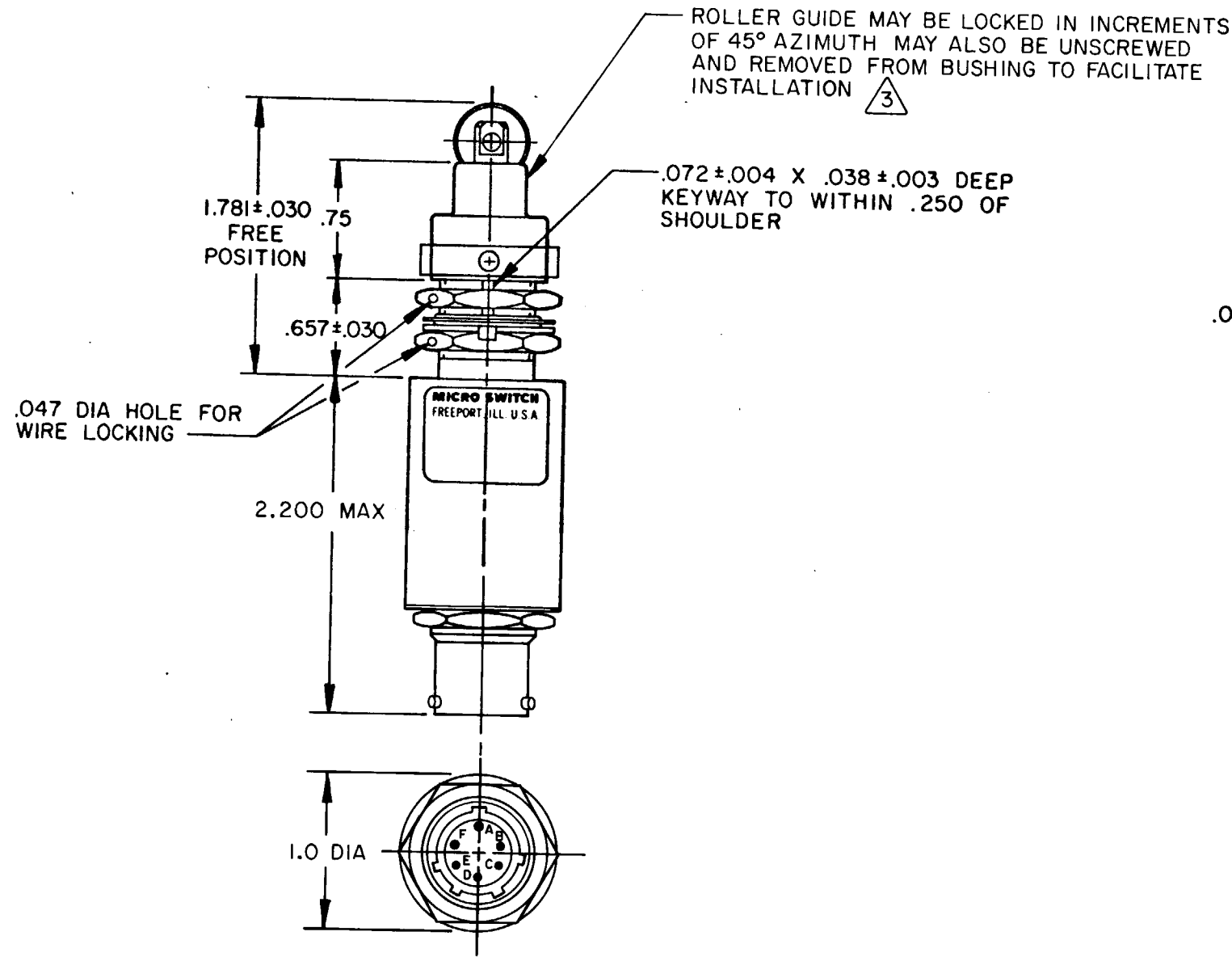
FED. MFG. CODE 91929

SWITCH-ENCLOSED

CATALOG LISTING
21EN65-RB1



21EN65-RB1
 M
 DRAWING NUMBER
 ISSUE
 REVISIONS
 A CO44351
 J A P
 13 SEPT 79
 B PR 8581
 G J W
 21 MAR 80
 C CO47573
 PART 4
 R J H
 11 AUG 80
 CHECK
 CEE
 5 OCT 79
 CHECK
 J A P
 13 SEPT 79
 DRAWN
 FO-5285 1-B



- NOTES
- 1 - CORROSION RESISTANT STEEL ENCLOSURE
 - 2 - SWITCH SEALED PER MIL-S-8805 SYMBOL 4
 - 3 TO ADJUST ROLLER DIRECTION, REMOVE ROLLER GUIDE LOCK RING, SCREW ROLLER GUIDE DOWN AS FAR AS POSSIBLE, THEN UNSCREW TO DESIRED DIRECTION. SECURE BY REPLACING ROLLER GUIDE LOCK RING
 - 4 - CIRCUIT DIAGRAM AND CAT. LIST. ARE SHOWN ON NAMEPLATE
 - 5 - CONTACTS "A" - "C" AND "D" - "F" MAKE WITHIN .003 CONTACTS "A" - "B" AND "D" - "E" MAKE WITHIN .006
 - 6 - HARDWARE MAY BE PACKAGED UNASSEMBLED PER MIL-S-8805

THIS DRAWING COVERS A PROPRIETARY ITEM AND IS THE PROPERTY OF MICRO SWITCH, A DIVISION OF HONEYWELL. THIS DRAWING IS NOT TO BE COPIED OR USED WITHOUT THE APPROVAL OF MICRO SWITCH.

CHARACTERISTICS		ELECTRICAL DATA	
OPERATING FORCE	6-12 LB	CONTACT ARRANGEMENT	
DIFFERENTIAL FORCE	30 LB MAX	S P D T (2)	
RELEASE FORCE	4 LB MIN	28 VDC	
PRETRAVEL	.040 MAX	LOAD	SEA LEVEL 50,000 FT.
DIFFERENTIAL TRAVEL	.020 MAX	RES	4 4
OVERTRAVEL	.250 MIN	IND	2 2
		MOTOR	4

SCALE FULL			
DO NOT SCALE PRINT			
TOLERANCES			
APPLY TO DESIGN UNITS. CONVERSIONS ARE ONLY FOR REFERENCE. UNLESS NOTED, TOLERANCES ARE ±			
DIM.	TOL.	DIM.	TOL.
NO PLACES	mm	in	mm/in
ONE PLACE	X	1/64	X X
TWO PLACES	X.X	0.01/016	X.XX
THREE PLACES	X.XX	0.15/006	X.XXX
ANGLES			0.38/015 0.13/005
DESIGN UNITS		SI METRIC <input type="checkbox"/> US CUSTOMARY <input checked="" type="checkbox"/>	
THIRD ANGLE PROJECTION			
WEIGHT 3.75 OZ MAX			