

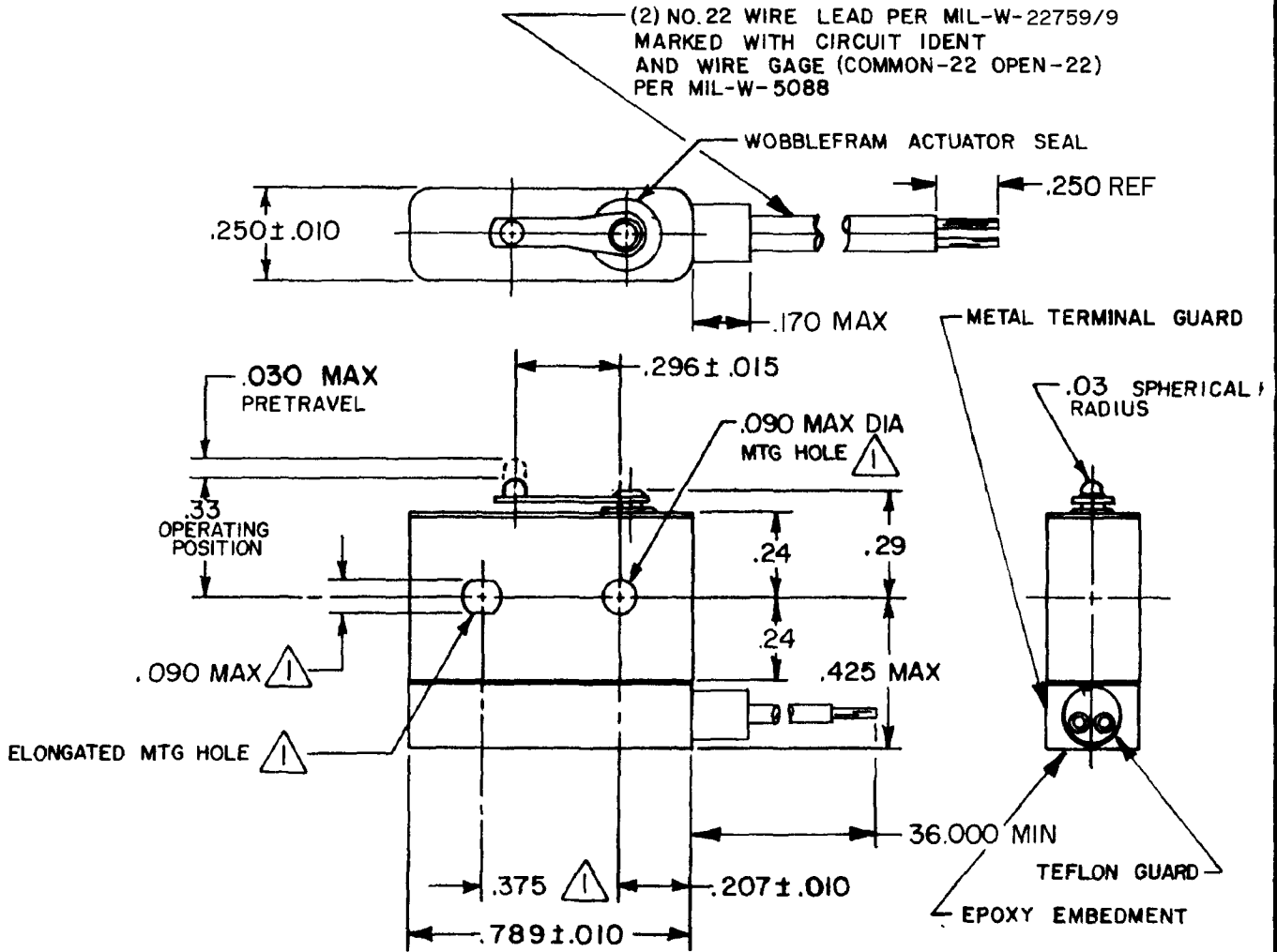
# MICRO SWITCH

FREEPORT ILLINOIS, U S A  
A DIVISION OF HONEYWELL INC.  
FED. MFG. CODE 91929

## SWITCH - BASIC

CATALOG LISTING

2 HM17-3



### NOTES

- 1 MOUNTING HOLES WILL ACCEPT PINS OR SCREWS OF .087 MAX DIA ON .375 ± .002 CENTERS
- 2 - FOR USE IN TEMPERATURE RANGE -85°F TO +250°F
- 3 - HERMETICALLY SEALED (METAL-TO-METAL, GLASS-TO-METAL)
- 4 - ALL EXPOSED PARTS ARE OF CORROSION RESISTANT MATERIALS
- 5 WEIGHT OF SWITCH ONLY IS 0.22 OZ MAX WEIGHT OF CONDUCTOR GROUP ONLY IS 0.20 OZ MAX PER FOOT
- 6 - DO NOT APPLY MORE THAN 1 1/2 INCH-LBS OF TORQUE WHEN TIGHTENING MOUNTING SCREWS

THIS DRAWING COVERS A PROPRIETARY ITEM AND IS THE PROPERTY OF MICRO SWITCH, A DIVISION OF HONEYWELL. THIS DRAWING IS NOT TO BE COPIED OR USED WITHOUT THE APPROVAL OF MICRO SWITCH.

THIRD ANGLE PROJECTION

### CHARACTERISTICS

OPERATING FORCE ----- 7 OZ MAX

RELEASE FORCE ----- 1 OZ MIN

DIFFERENTIAL TRAVEL ----- .006 MAX

OVERTRAVEL ----- .003 MIN

### ELECTRICAL DATA

CONTACT ARRANGEMENT  
S P N O

LOAD	SEA LEVEL		70,000 FT
	28 VDC	115 VAC, 400 CPS	28 VDC
RESISTIVE	4 AMPS	2 AMPS	4 AMPS
INDUCTIVE	2 AMPS	2 AMPS	2 AMPS
LAMP	1 AMP.	0.5 AMP	1 AMP

SCALE 2:1

DO NOT SCALE PRINT

UNLESS OTHERWISE SPECIFIED TOLERANCES ARE

ONE PLACE (.0) ± .030

TWO PLACE (.00) ± .015

THREE PLACE (.000) ± .005

ANGLES ±

RAW MATERIAL - COMMERCIAL STANDARD

DIMENSIONS ARE IN INCHES AND ARE TO BE MET BEFORE PROTECTIVE COATINGS ARE APPLIED

MICRO SWITCH STANDARDS APPLY

WEIGHT 5

2 HM17-3

PAGE 1 OF 1

M

DRAWING NUMBER

6

ISSUE

### REVISIONS

A	PR-13481	16 NOV 84
T	A D	10 NOV 84
B	CO71228	16 NOV 91
D	CO94220	24 MAR 99

FORMTEK

FD-52848-B

DRAWN

REPLACES

RELEASE NO. PR-13481

CHECK

16 NOV 84

CHECK

16 NOV 91

CHECK

16 NOV 84

CHECK

16 NOV 84

CHECK

16 NOV 84

CHECK

16 NOV 84

CHECK

16 NOV 84

CHECK

16 NOV 84

CHECK

16 NOV 84

CHECK

16 NOV 84

CHECK

16 NOV 84

CHECK

16 NOV 84

CHECK

16 NOV 84

CHECK

16 NOV 84

CHECK

16 NOV 84

CHECK

16 NOV 84

CHECK

16 NOV 84

CHECK

16 NOV 84

CHECK

16 NOV 84

CHECK

16 NOV 84

CHECK

16 NOV 84

CHECK

16 NOV 84

CHECK

16 NOV 84

CHECK