

MICRO SWITCH
a Honeywell Division

FED. MFG. CODE 91 929

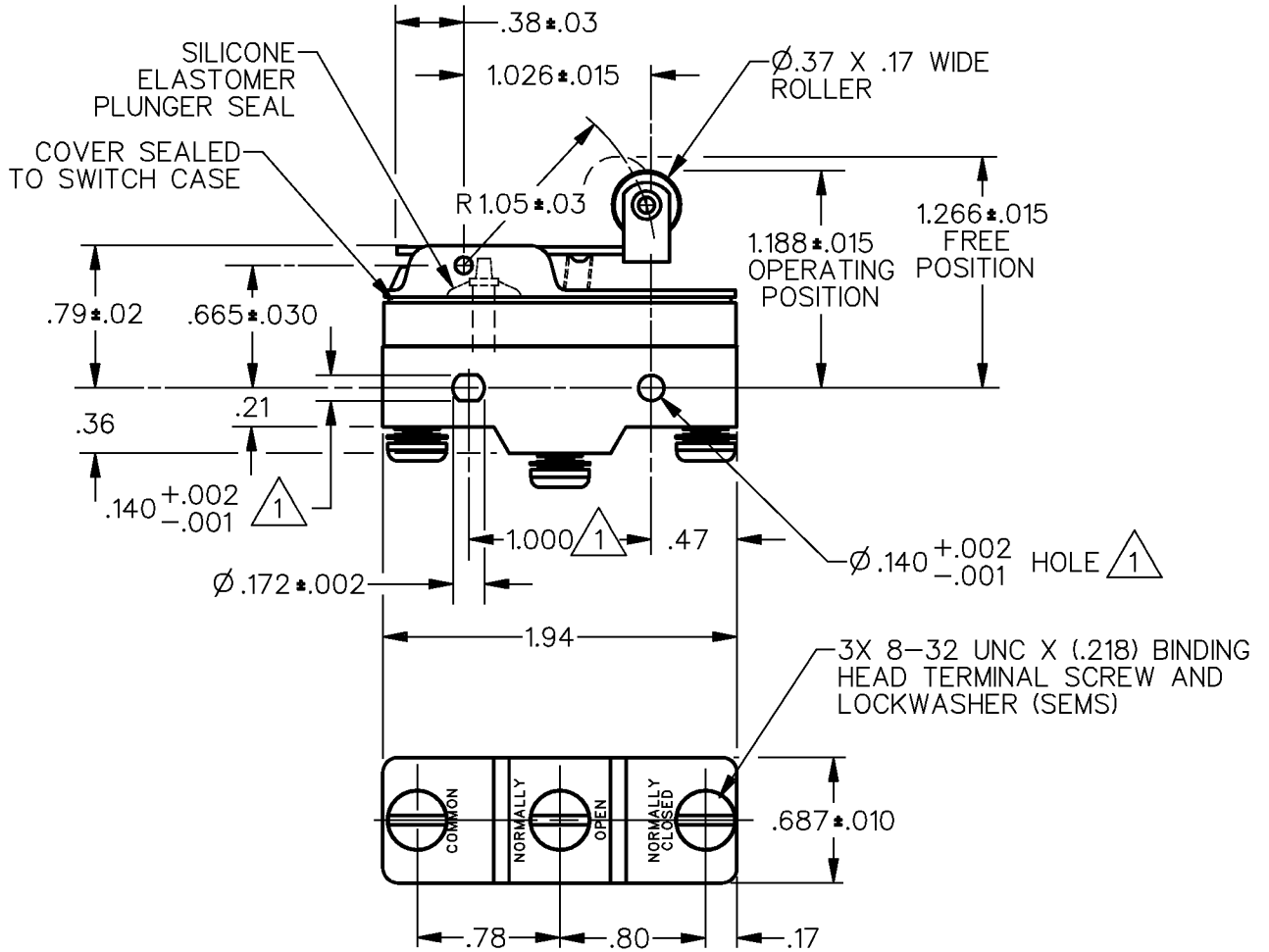
SWITCH - BASIC

CATALOG LISTING

BZ-2RW822555114-A46

AQB7077

WHEN SEARCHING FOR THIS CATALOG LISTING WITHIN HONEYWELL'S INTERNAL SAP SYSTEM, THE LISTING MUST BE ENTERED WITHOUT DASHES (BZ2RW822555114A46) DUE TO CHARACTER LIMITATIONS IMPOSED BY THE SYSTEM.



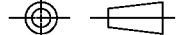
NOTES

- ① MOUNTING HOLES WILL ACCEPT PINS OR SCREWS OF Ø.139 MAX ON 1.000 ± .002 CENTERS
- 2 - SEALED CONSTRUCTION PROVIDES SPLASH RESISTANCE

ANSI Y14.5M-1982 APPLIES

THIS DRAWING COVERS A PROPRIETARY ITEM AND IS THE PROPERTY OF MICRO SWITCH, A DIVISION OF HONEYWELL. THIS DRAWING IS NOT TO BE COPIED OR USED WITHOUT THE APPROVAL OF MICRO SWITCH.

THIRD ANGLE PROJECTION



CHARACTERISTICS

OPERATING FORCE -----6 OZ MAX
RELEASE FORCE -----1 1/2 OZ MIN
DIFFERENTIAL TRAVEL -----.003-.020
OVERTRAVEL -----.094 MIN

ELECTRICAL DATA

CONTACT ARRANGEMENT
S P D T
L96
15A 125, 250 OR 480 VAC
1/8HP 125 VAC, 1/4HP 250 VAC
1/2A 125 VDC, 1/4A 250 VDC

-L288-
-L315-
-L306-



16A 250V ~ T85 5E4

SCALE — NONE DO NOT SCALE PRINT

UNLESS OTHERWISE SPECIFIED TOLERANCES ARE

ONE PLACE (.0) ±.030
TWO PLACE (.00) ±.015
THREE PLACE (.000) ±.005
ANGLES ±

WEIGHT

CATALOG LISTING
BZ-2RW822555114-A46
PAGE 1 OF 1
ISSUE 4

REPLACES X100238-BZ
RELEASE NO. PR-22047
09DEC08
RS
CHECK
06 JAN 06
RJ
CHECK
23 FEB 96
T S M
CHECK
21 FEB 96
J A F
DRAWN

REVISIONS	
A	C093346 D L T 17 SEP 98
B	0017582 TSG 06 JAN 06
C	0046794 MBH 09DEC08

RASTER