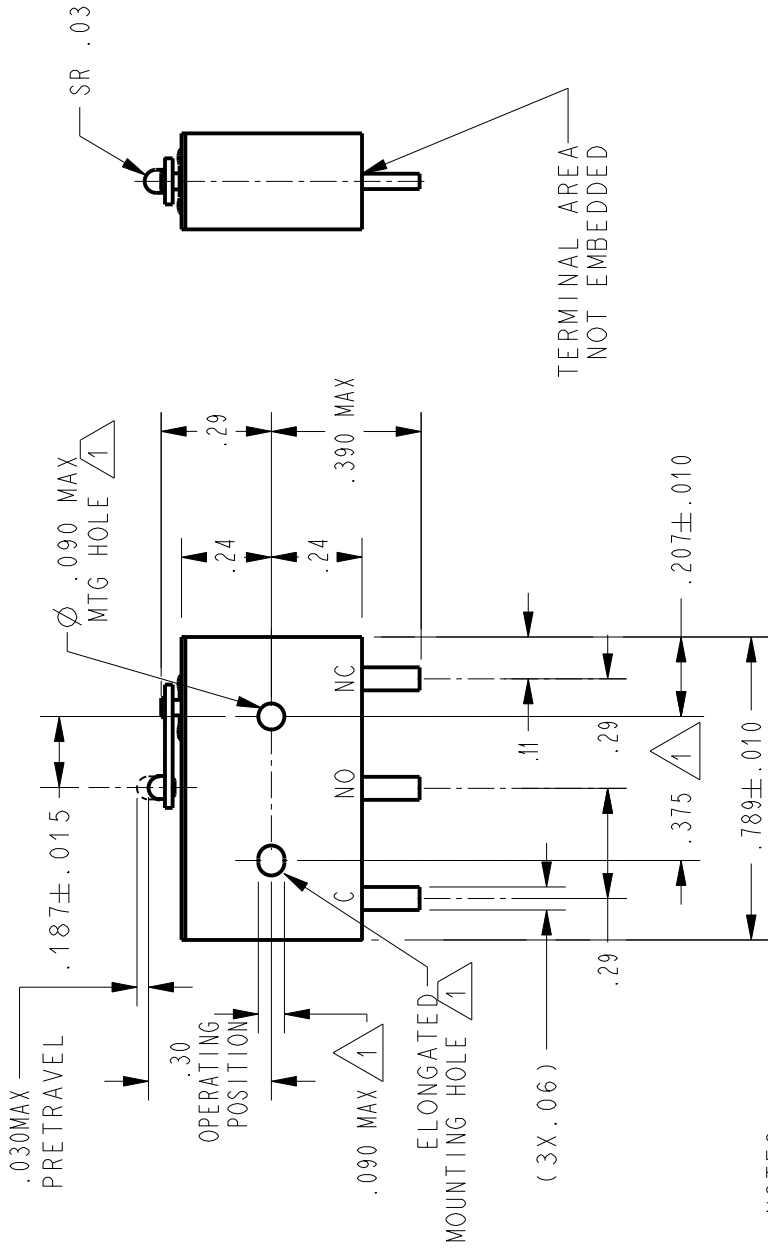
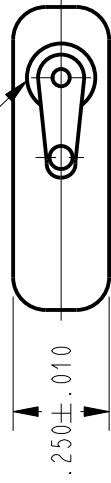


|                 |  |             |            |
|-----------------|--|-------------|------------|
| CATALOG LISTING |  | PAGE 1 OF 1 |            |
| 19HM5-CB        |  | ISSUE       | 4          |
|                 |  | REPLACES    | X112949-HM |

WOBBLEFRAM ACTUATOR SEAL



TERMINAL AREA NOT EMBEDDED

**NOTES**

- 1 MOUNTING HOLES WILL ACCEPT PINS OR SCREWS OF  $\varnothing .087$  MAX ON  $.375 \pm .002$  CENTERS
- 2 - FOR USE IN TEMPERATURE RANGE  $-300^{\circ}\text{F}$  TO  $+500^{\circ}\text{F}$
- 3 - HERMETICALLY SEALED (METAL-TO-METAL, GLASS-TO-METAL)
- 4 - ALL EXPOSED PARTS ARE OF CORROSION RESISTANT MATERIALS
- 5 - TERMINALS ARE TINNED FOR SOLDERING
- 6 - DO NOT APPLY MORE THAN 1 1/2 INCH-LBS OF TORQUE WHEN TIGHTENING MOUNTING SCREWS
- 7 - GOLD ALLOY MOVABLE CONTACTS AND GOLD ALLOY STATIONARY CONTACTS
- 8 - DRY NITROGEN FILL GAS

ANSI Y14.5M-1982 APPLIES

THIS DRAWING COVERS A PROPRIETARY ITEM AND IS THE PROPERTY OF MICRO SWITCH. A DIVISION OF HONEYWELL. THIS DRAWING IS NOT TO BE COPIED OR USED WITHOUT THE APPROVAL OF MICRO SWITCH.



| CHARACTERISTICS          |              | ELECTRICAL DATA                           |             |
|--------------------------|--------------|---|-------------|
| OPERATING FORCE-----     | .11.0 OZ MAX | CONTACT ARRANGEMENT                       | S P D T     |
| RELEASE FORCE-----       | 1.5 OZ MIN   | 28 VOLTS DC RATING                        |             |
| DIFFERENTIAL TRAVEL----- | .004 MAX     | INDUCTIVE -- SEA LEVEL - 1/4 AMP          |             |
| OVERTRAVEL-----          | .006 MIN     | RESISTIVE -- SEA LEVEL - 1/2 AMP          |             |
|                          |              | DIELECTRIC STRENGTH                       |             |
|                          |              | 500 VRMS - 500 $\mu\text{A}$ MAX LEAKAGE  |             |
| SCALE                    | 2 : 1        | UNLESS OTHERWISE SPECIFIED TOLERANCES ARE |             |
| DO NOT SCALE PRINT       |              | ONE PLACE (.0)                            | $\pm .030$  |
|                          |              | TWO PLACE (.00)                           | $\pm .015$  |
|                          |              | THREE PLACE (.000)                        | $\pm .005$  |
|                          |              | ANGLES                                    | $\pm$       |
|                          |              | WEIGHT                                    | .014 LB MAX |