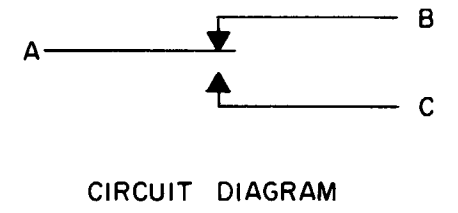


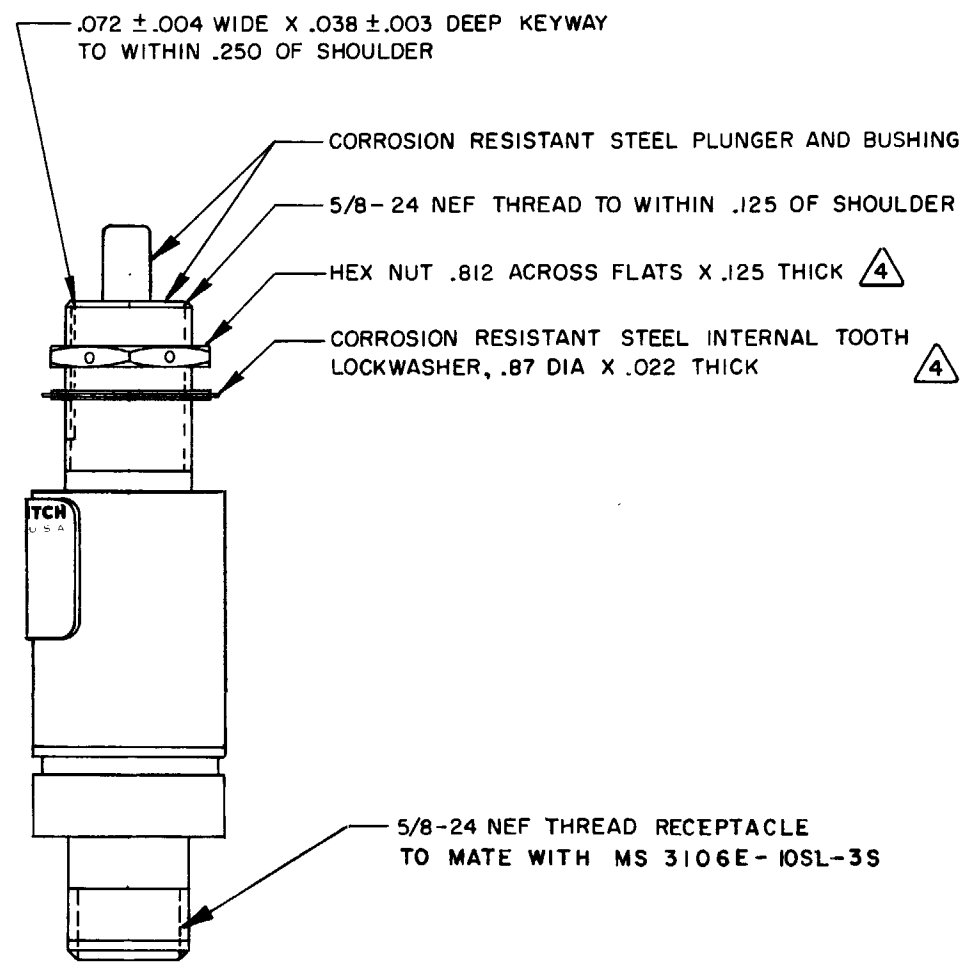
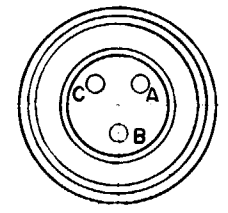
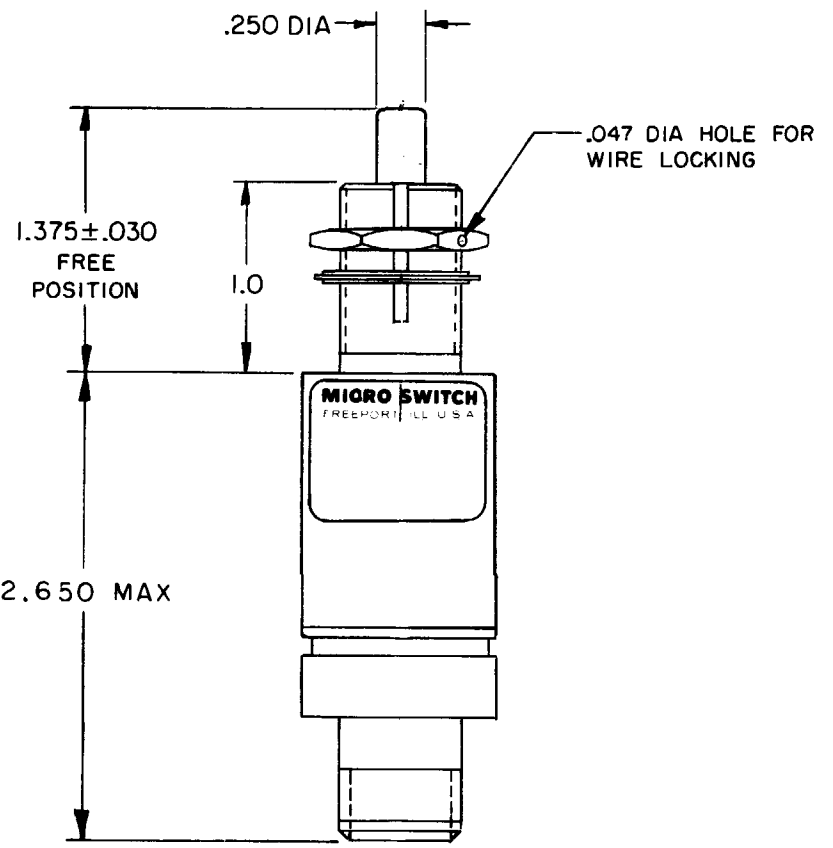
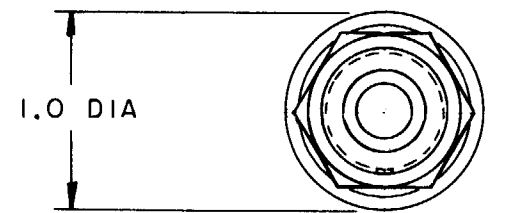
H MICRO SWITCH
 FREEPORT, ILLINOIS, U.S.A.
 A DIVISION OF HONEYWELL
 FED. MFG. CODE 91929

SWITCH - ENCLOSED

CATALOG LISTING
1CH32 - RB



1CH32-RB
 M DRAWING NUMBER
 ISSUE 15
 REVISIONS
 A SR 11965
 M B F 10 SEP 65
 B CO 20965
 M B F 21 FEB 66
 C CO 30832
 R E R 20 JUL 72
 D CO 33906
 R E R NOV 74
 E CO 34722
 J A L 7 JAN 75
 F CO 44351
 S L B 7 DEC 78
 G CO 47573
 J M J 24 JUL 80
 H CO 48557
 G J W 23 JUN 81
 J CO 51315
 J A P 16 JUN 82
 K CO 58255
 T A 5 DEC 85
 DRAWN
 M B F 10 SEP 65
 CHECK
 L S D 13 SEPT 65
 CHECK
 B R J 13 SEPT 65
 CHECK
 B R J 13 SEPT 65
 CHECK
 S R 11965
 RELEASE NO.



NOTES
 1 - CORROSION RESISTANT STEEL ENCLOSURE
 2 - SWITCH SEALED PER MIL-S-8805 SYMBOL 2
 3 - CIRCUIT DIAGRAM, CATALOG LISTING AND DATE CODE ARE SHOWN ON NAMEPLATE
 4 HARDWARE MAY BE PACKAGED UNASSEMBLED PER MIL-S-8805

THIS DRAWING COVERS A PROPRIETARY ITEM AND IS THE PROPERTY OF MICRO SWITCH, A DIVISION OF MINNEAPOLIS-HONEYWELL REGULATOR CO. THIS DRAWING IS NOT TO BE COPIED OR USED WITHOUT THE APPROVAL OF MICRO SWITCH.

CHARACTERISTICS		ELECTRICAL DATA		SCALE FULL
OPERATING FORCE	3-6 LB	CONTACT ARRANGEMENT		DO NOT SCALE PRINT
FULL OVERTRAVEL FORCE	17 LB MAX	SPDT		UNLESS OTHERWISE NOTED
RELEASE FORCE	2 LB MIN	LOAD	28 VDC	DIMENSIONS ARE IN INCHES
PRETRAVEL	.040 MAX	RES	SEA LEVEL 50,000 FT.	TOLERANCES ARE:
DIFFERENTIAL TRAVEL	.020 MAX	IND		ONE PLACE (.0) ±.030
OVERTRAVEL	.250 MIN	MOTOR		TWO PLACE (.00) ±.015
				THREE PLACE (.000) ±.005
				ANGLES ±.005
				WEIGHT 6.5 OZ MAX