

7SEI-T

M

DRAWING NUMBER

ISSUE

REPLACES

RELEASE NO. PR-7883

CHECK

REVISIONS

CHECK

18 MAY 79

SLH

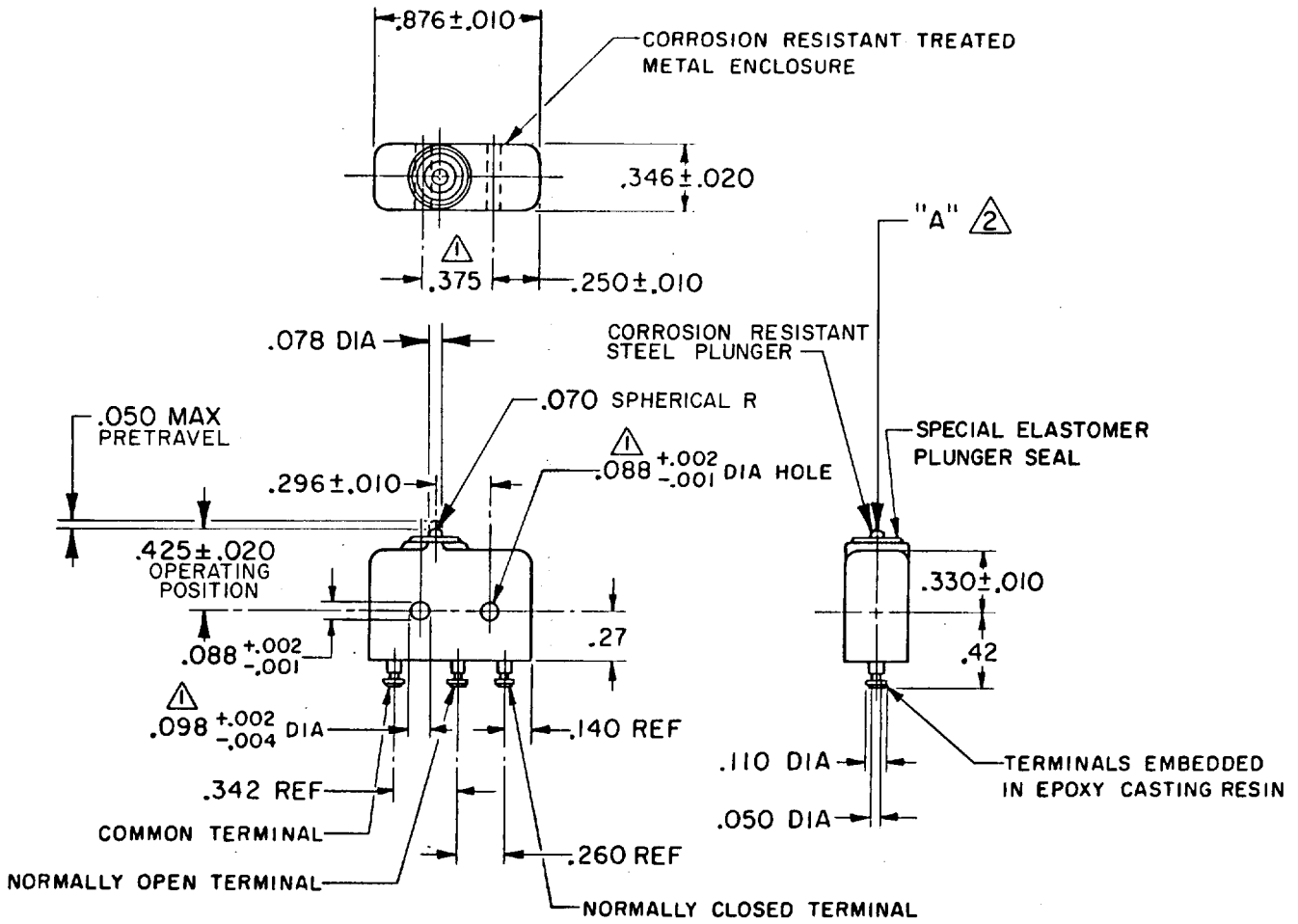
79

18 MAY 79

FO-52848-A

DRAWN

C.E.B.

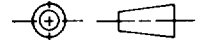


**NOTE -**

- ▲ MOUNTING HOLES WILL ACCEPT PINS OR SCREWS OF .087 MAX DIA ON .375 ± .002 CENTERS
- ▲ ACTUATION IN LINE WITH ARROW "A" IS RECOMMENDED

THIS DRAWING COVERS A PROPRIETARY ITEM AND IS THE PROPERTY OF MICRO SWITCH, A DIVISION OF HONEYWELL. THIS DRAWING IS NOT TO BE COPIED OR USED WITHOUT THE APPROVAL OF MICRO SWITCH.

THIRD ANGLE PROJECTION



**CHARACTERISTICS**

OPERATING FORCE ----- 4-8 OZ  
 RELEASE FORCE ----- 2 OZ MIN  
 RELEASE TRAVEL ----- .004 MIN  
 DIFFERENTIAL TRAVEL ----- .004 MAX  
 OVERTRAVEL ----- .003 MIN

**ELECTRICAL DATA**

CONTACT ARRANGEMENT  
 S P D T

250 VAC ----- 5 AMP  
 30 VOLTS DC RATING

INDUCTIVE ----- SEA LEVEL -- 3 AMP  
 50,000 FT -- 2.5 AMP  
 RESISTIVE ----- SEA LEVEL -- 5 AMP  
 50,000 FT -- 5 AMP  
 MAXIMUM INRUSH ----- 24 AMP

SCALE FULL

DO NOT SCALE PRINT

**TOLERANCES**  
 APPLY TO DESIGN UNITS. CONVERSIONS ARE ONLY FOR REFERENCE. UNLESS NOTED, TOLERANCES ARE ±

DIM.	TOL.	DIM.	TOL.
mm	mm/in	in	mm/in
NO PLACES	X	1/.04	
ONE PLACE	X, X	0.4/.016	X X 0.8/.03
TWO PLACES	X, XX	0.15/.008	X X X 0.38/.016
THREE PLACES	X, XXX		X X X X 0.13/.005

SI METRIC  US CUSTOMARY

DESIGN UNITS  WEIGHT .26 OZ MAX