

MICRO SWITCH

FREERPORT ILLINOIS, U.S.A
A DIVISION OF HONEYWELL
FED. MFG. CODE 91929

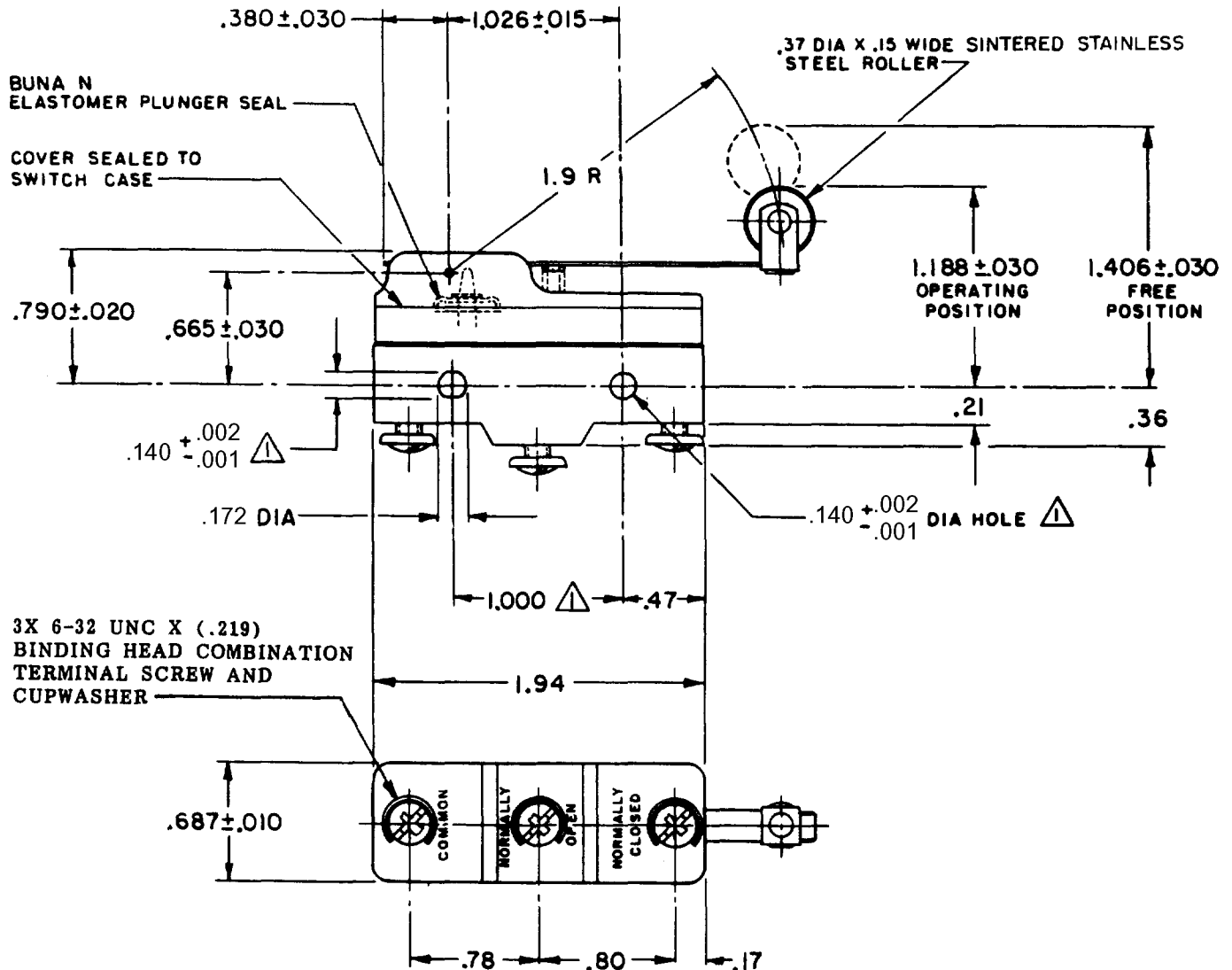
SWITCH - BASIC

CATALOG LISTING

BZ-7RW82550519-A2-S

AQL9301

WHEN SEARCHING FOR THIS CATALOG LISTING WITHIN HONEYWELL'S INTERNAL SAP SYSTEM, THE LISTING MUST BE ENTERED WITHOUT DASHES (BZ7RW82550519A2S) DUE TO CHARACTER LIMITATIONS IMPOSED BY THE SYSTEM.

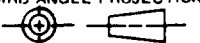


NOTES

- 1 MOUNTING HOLES WILL ACCEPT PINS OR SCREWS OF .139 MAX DIA ON 1.000 ± .002 CENTERS
- 2 - SEALED CONSTRUCTION PROVIDES SPLASH RESISTANCE

THIS DRAWING COVERS A PROPRIETARY ITEM AND IS THE PROPERTY OF MICRO SWITCH, A DIVISION OF HONEYWELL. THIS DRAWING IS NOT TO BE COPIED OR USED WITHOUT THE APPROVAL OF MICRO SWITCH.

THIRD ANGLE PROJECTION



CHARACTERISTICS

OPERATING FORCE ----- 5 OZ MAX
RELEASE FORCE ----- 3/4 OZ MIN
DIFFERENTIAL TRAVEL --- .040 - .070
OVERTRAVEL ----- .156 MIN

ELECTRICAL DATA

CONTACT ARRANGEMENT
S P D T

L96
15A 125, 250 OR 480 VAC
1/8 HP 125 VAC, 1/4 HP 250 VAC
1/2A 125 VDC, 1/4A 250 VDC

L288
L315
L306



16A 250V ~ T85 5E4

SCALE NONE

DO NOT SCALE PRINT

TOLERANCES

APPLY TO DESIGN UNITS. CONVERSIONS ARE ONLY FOR REFERENCE. UNLESS NOTED, TOLERANCES ARE 2

	DM.	TOL.	DM.	TOL.
	mm	mm/in	in	mm/in
NO PLACES	X	17/100	X	0.01/00
ONE PLACE	X,X	0.47/010	X,X	0.30/016
TWO PLACES	X,X,X	0.10/005	X,X,X	0.30/016
THREE PLACES	X,X,X,X		X,X,X,X	0.13/005

DESIGN UNITS SI METRIC US CUSTOMARY

WEIGHT .076 LB

BZ-7RW82550519-A2-S

M

DRAWING NUMBER

BC

ISSUE

REVISIONS

A	0017585	LKM	20 FEB 06
B	0046794	LK	10 DEC 08

FO-52848-A

PAGE 1 OF 1

RELEASE NO. 0003303

CHECK

10 DEC 08

RS

CHECK

03 FEB 04

MDM

CHECK

03 FEB 04

TRF

DRAWN

FO-52848-A

X114656-BZ

REPLACES