

Interactive Catalog Replaces Catalog Pages

Honeywell Sensing and Control has replaced the PDF product catalog with the new **Interactive Catalog**. The **Interactive Catalog** is a power search tool that makes it easier to find product information. It includes more installation, application, and technical information than ever before.



**Click this icon to try the new
Interactive Catalog.**

Sensing and Control

Honeywell Inc.

11 West Spring Street

Freeport, Illinois 61032

Basic Switches

Environment Sealed

SE/XE Series



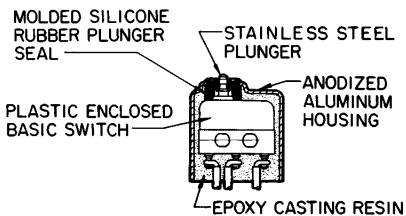
GENERAL INFORMATION

SE and XE switches are the smallest environment-sealed switches offered by MICRO SWITCH. Both types enclose basic switches within a corrosion resistant aluminum housing to seal precision switch contacts from contamination. SE switches include a SM basic switch, and XE switches include the smaller SX basic switch.

Switches held depressed for extended periods of time at temperature extremes may experience retarded plunger return upon deactuation. Where such a condition exists in the application, contact the 800 number for special designs that are available.

FEATURES

- Watertight seal per enclosure design symbol 3, MIL-S-8805
- Power load switching capability up to 7 amps
- Temperature tolerance up to +221°F (105°C)
- High temperature construction for use to +300°F (149°C)
- Several auxiliary actuators
- Choice of termination
- Military standard construction with listings qualified to MIL-S-8805
- All 4SE switches are UL recognized and CSA certified
- 4XE switches are UL recognized



ELECTRICAL RATINGS

| Circuitry | Electrical Rating Code | |
|--------------------------|---|---|
| Single-Pole Double-Throw | A 5 amps res., 3 amps ind., (sea level), 5 amps res., 2.5 amps ind., (50,000 feet) 28 vdc. 5 amps res., 5 amps ind., 125 or 250 vac, 60 Hz. | D UL Rating 7 amps, 250 vac 60 Hz |
| | B UL and CSA Rating 5 amps, 250 vac, 60 Hz | E 7 amps res., 4 amps ind., (sea level), 7 amps res., 2.5 amps ind., (50,000 feet), 28 vdc. |
| | C 7 amps res., 4 amps ind., (sea level), 7 amps res., 2.5 amps ind., (50,000 feet), 28 vdc. 7 amps res., 4 amps ind., (sea level), 115 vac, 400 Hz | R 1 amp res., 0.50 amp ind., 28 vdc. |

Characteristics: O.F. — Operating Force; R.F. — Release Force; P.T. — Pretravel; O.T. — Overtravel; D.T. — Differential Travel; O.P. — Operating Position

SE SWITCHES ORDER GUIDE

| Catalog Listing | Recommended For | Electrical Rating Code | Characteristics | | | | | |
|-----------------|--|------------------------|---------------------|--------------------------|---------------------|---------------------|---------------------|----------------|
| | | | O.F. Newtons ounces | R.F. min. Newtons ounces | P.T. max. mm inches | O.T. min. mm inches | D.T. max. mm inches | O.P. mm inches |
| 1SE1 | Most applications | A | 1,39-4,73 5-17 | 1,11 4 | 1,27 .050 | 0,08 .003 | 0,1 .004 | 10,8 .425 |
| 1SE2 | SPST — Normally-closed | A | 1,39-4,73 5-17 | 1,11 4 | 1,27 .050 | 0,08 .003 | 0,1 .004 | 10,8 .425 |
| 1SE3 | SPST — Normally-open | A | 1,39-4,73 5-17 | 1,11 4 | 1,27 .050 | 0,08 .003 | 0,1 .004 | 10,8 .425 |
| 4SE1 | UL and CSA listing and UL and CSA listed lead wire | B | 1,39-4,73 5-17 | 1,11 4 | 1,27 .050 | 0,08 .003 | 0,1 .004 | 10,8 .425 |
| 5SE1 | Oil resistant Fluorosilicone seal | A | 1,39-4,73 5-17 | 1,11 4 | 1,27 .050 | 0,08 .003 | 0,1 .004 | 10,8 .425 |
| 7SE1 | Lower force | A | 1,11-2,22 4-8 | 0,56 2 | 1,27 .050 | 0,08 .003 | 0,1 .004 | 10,8 .425 |
| 12SE4-T | High return force | A | 1,39-5,28 5-19 | 1,11 4 | 1,27 .050 | 0,08 .003 | 0,1 .004 | 10,8 .425 |
| 1SE1-T | For customer leading | A | 1,39-4,73 5-17 | 1,11 4 | 1,27 .050 | 0,08 .003 | 0,1 .004 | 10,8 .425 |

1 foot leads (other lengths available)



Fig. 1



Fig. 2

Basic Switches

Environment Sealed

SE/XE Series

Characteristics: O.F. — Operating Force; R.F. — Release Force;
 P.T. — Pretravel; O.T. — Overtravel; D.T. — Differential Travel;
 O.P. — Operating Position

AUXILIARY ACTUATORS FOR SE SWITCHES ORDER GUIDE

(Switches are not included with actuators)

| Catalog Listing | Description | Actuator Length A mm inches | Characteristics measured with actuators mounted to a 1SE1 | | | | | | |
|-----------------|---|-----------------------------------|---|--------------------------------|------------------------------|---------------------------|---------------------------|-----------------------|-------------------------|
| | | | O.F. max. Newtons ounces | R.F. min. Newtons ounces | P.T. approx. mm inches | O.T. min. mm inches | D.T. max. mm inches | O.P. mm inches | F.P. mm inches |
| JE-1 | Straight leaf (mounting hardware included) | 16,8 .66 | 3,34 12 | 0,56 2 | 3,81 .150 | 0,38 .015 | 0,64 .025 | 11,2 .440 | 15±0,76 .590±.030 |
| JE-4 | Roller leaf. Roller turned 90° to switch axis (mounting hardware included). | 16,8 .66 | 3,34 12 | 0,56 2 | 3,81 .150 | 0,38 .015 | 0,64 .025 | 16,3 .640 | 20,1 .790 approx. |
| JE-5 | Roller leaf (mounting hardware included) | 14,2 .560 | 3,34 12 | 0,56 2 | 3,81 .150 | 0,38 .015 | 0,64 .025 | 16,3 .640 | 20,1±0,76 .790±.030 |
| JE-17 | Roller leaf. Reversed position (mounting hardware included) | 14,2 .560 | 3,34 12 | 0,56 2 | 3,81 .150 | 0,38 .015 | 0,64 .025 | 16,3 .640 | 20,1±0,76 .790±.030 |
| JE-21 | Roller lever | 13,7 .540 | 1,67 6 | 0,28 1 | 2,54 .100 | 0,25 .010 | 0,41 .016 | 16,3 .640 | 18,8±0,76 .740±.030 |
| JE-22 | Tandem Roller Lever | 17,8 .700 | 4,73 17 | 1,11 4 | 2,54 .100 | 0,15 .006 | 0,3 .012 | 16,8±1,3 .660±.050 | 19,3±1,3 .760±.050 |

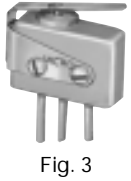


Fig. 3



Fig. 4



Fig. 5



Fig. 6



Fig. 7



Fig. 8

Sealed/High Temperature

Basic Switches

Environment Sealed

SE/XE Series

Characteristics: O.F. — Operating Force; R.F. — Release Force; P.T. — Pretravel; D.T. — Differential Travel; O.P. — Operating Position.

XE SWITCHES ORDER GUIDE

| Catalog Listing | Recommended For | Electrical Rating Code | Characteristics | | | | | |
|--------------------|---|------------------------|--------------------------|--------------------------|---------------------|---------------------|---------------------|-----------------------------|
| | | | O.F. max. Newtons ounces | R.F. max. Newtons ounces | P.T. max. mm inches | O.T. min. mm inches | D.T. max. mm inches | O.P. mm inches ±.020 (0,51) |
| 1XE1 (MS27994-1) | Most applications MIL-S-8805 requirements | C | 1,39-4,73 5-17 | 1,11 4 | 1,27 .050 | 0,1 .004 | 0,13 .005 | 10,8 .425 |
| 1XE201 (MS27994-4) | General Use MIL-S-8805 requirements MIL-W-22759/11 wire | C | 1,39-4,73 5-17 | 1,11 4 | 1,27 .050 | 0,1 .004 | 0,13 .005 | 10,8 .425 |
| 1XE3 | SPST-Normally Open | C | 1,39-4,73 5-17 | 1,11 4 | 1,27 .050 | 0,1 .004 | 0,13 .005 | 10,8 .425 |
| 1XE301 (MS27994-5) | Gold Contacts MIL-W-22759/11 wire | R | 1,39-4,73 5-17 | 1,11 4 | 1,27 .050 | 0,1 .004 | 0,13 .005 | 10,8 .425 |
| 4XE1 | UL listing and UL and CSA listed leadwire | D | 1,39-4,73 5-17 | 1,11 4 | 1,27 .050 | 0,1 .004 | 0,13 .005 | 10,8 .425 |
| 5XE1 | Oil resistant Fluorosilicone seal | C | 1,39-4,73 5-17 | 1,11 4 | 1,27 .050 | 0,1 .004 | 0,13 .005 | 10,8 .425 |
| 14XE1 | Less operating force Use to +300°F (149°C) | E | 2,50 9 max. | 0,56 2 | 0,76 .030 | 0,1 .004 | 0,13 .005 | 10,9 .430 |
| 14XE1-T | For customer leading Use to +300°F (149°C) | E | 2,50 9 max. | 0,56 2 | 0,76 .030 | 0,1 .004 | 0,13 .005 | 10,9 .430 |
| 1XE1-T (MS27994-3) | For customer leading | C | 1,39-4,73 5-17 | 1,11 4 | 1,27 .050 | 0,1 .004 | 0,13 .005 | 10,8 .425 |

1 foot leads (other lengths available)



Fig. 9



Fig. 10

Characteristics: O.F. — Operating Force; R.F. — Release Force; P.T. — Pretravel; O.T. — Overtravel; D.T. — Differential Travel; O.P. — Operating Position; F.P. — Free Position.

AUXILIARY ACTUATORS FOR XE SWITCHES ORDER GUIDE (Switches are not included with the actuators)

| Catalog Listing | Description | Characteristics measured with actuator mounted on a 1XE1 | | | | | | |
|-----------------|---------------|--|--------------------------|------------------------|---------------------|---------------------|------------------------|------------------------|
| | | O.F. max. Newtons ounces | R.F. min. Newtons ounces | P.T. approx. mm inches | O.T. min. mm inches | D.T. max. mm inches | O.P. mm inches | F.P. mm inches |
| JM-1 | Straight leaf | 5,84 21 | 0,83 3 | 3,18 .125 | 0,23 .009 | 0,3 .012 | 10,8±0,76 .425±.030 | 14±0,76 .550±.030 |
| JM-5 | Roller leaf | 5,84 21 | 0,83 3 | 3,18 .125 | 0,23 .009 | 0,3 .012 | 15,9±0,89 .625±.035 | 19,1±0,89 .750±.035 |



Fig. 11



Fig. 12

Sealed/High Temperature

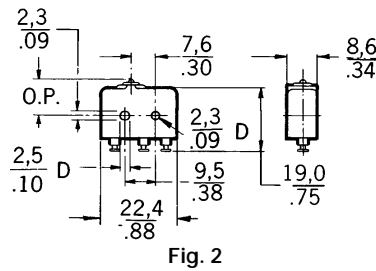
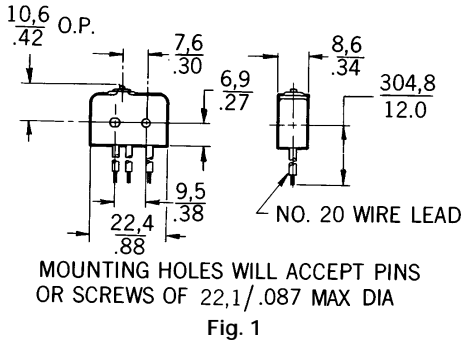
Basic Switches

Environment Sealed

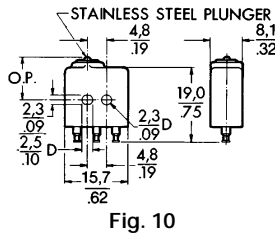
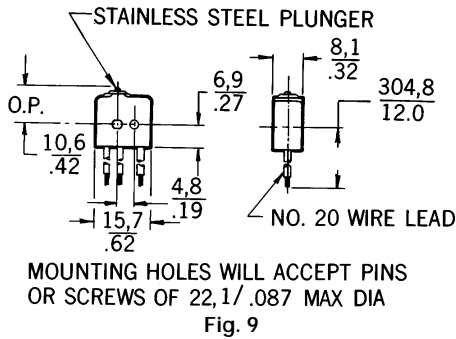
SE/XE Series

MOUNTING DIMENSIONS (For reference only)

SE ENVIRONMENT PROOF SWITCHES

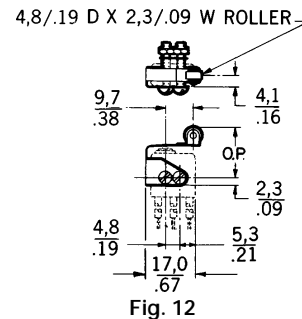
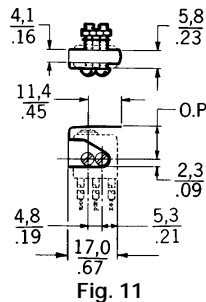
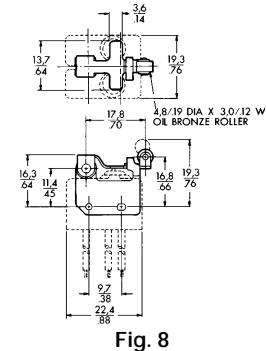
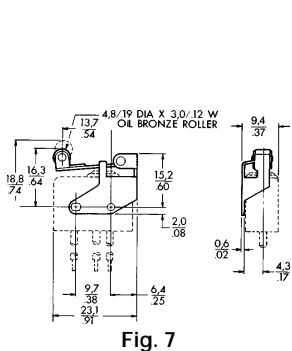
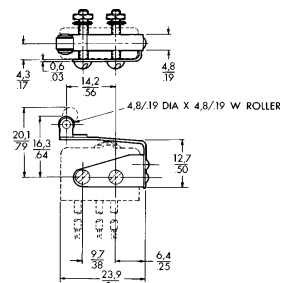
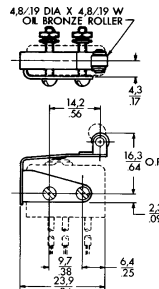
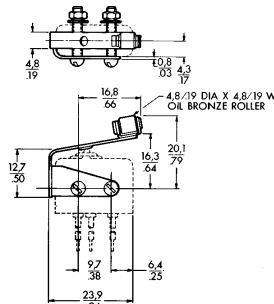
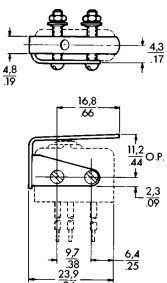


XE ENVIRONMENT PROOF SWITCHES



Dimensions shown are for reference only. For actual dimensions, contact the 800 number.

AUXILIARY ACTUATORS



Sealed/High Temperature