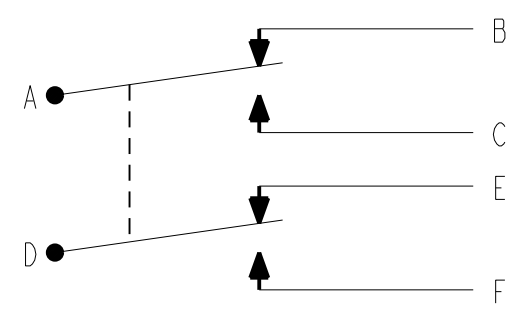


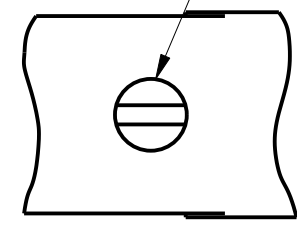
ROLLER LEVER MAY BE ADJUSTED FOR AN INFINITE NUMBER OF POSITIONS THRU 360°. ADJUSTMENT IS MADE BY LOOSENING THE LOCK NUT AND THEN THE LOCKSCREW AND TURNING GEAR UNTIL LEVER IS IN DESIRED POSITION. SCREW AND LOCK NUT ON SHAFT IS THEN TIGHTENED TO POSITIVELY LOCK LEVER IN POSITION.

LEVER ADJUSTMENT DETAIL
SCALE 2:1



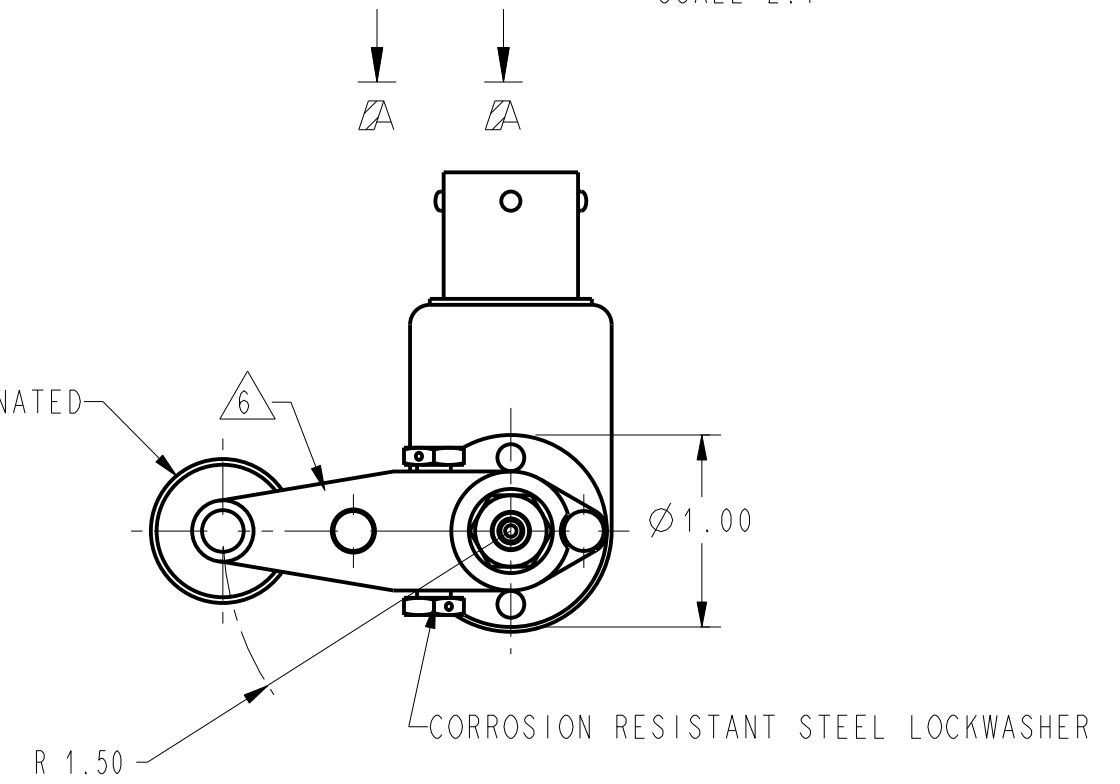
CIRCUIT DIAGRAM
NON-ACTUATED

CORROSION RESISTANT
STEEL ADJUSTING
WORM GEAR



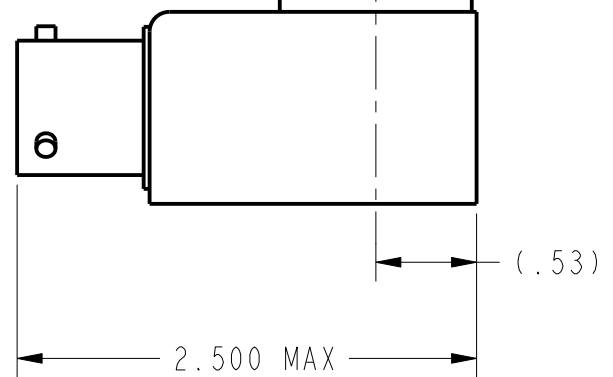
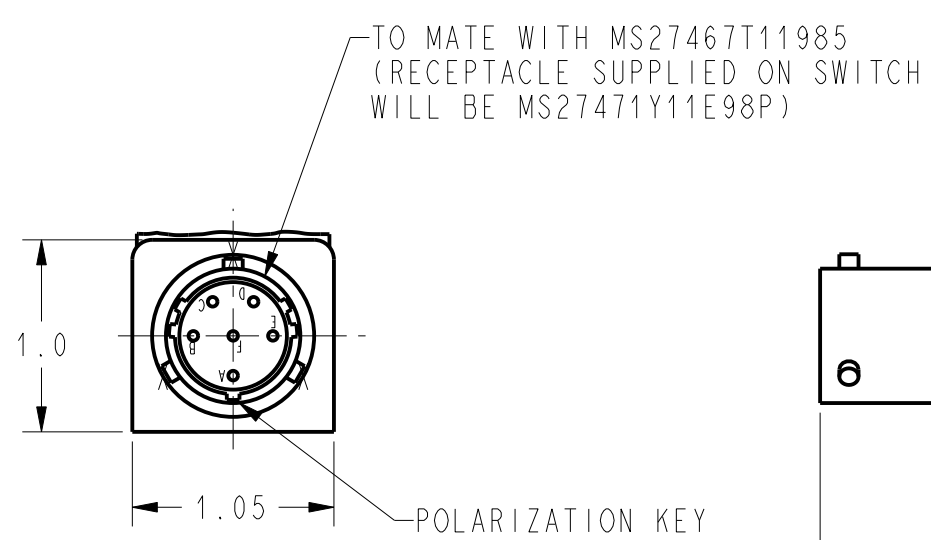
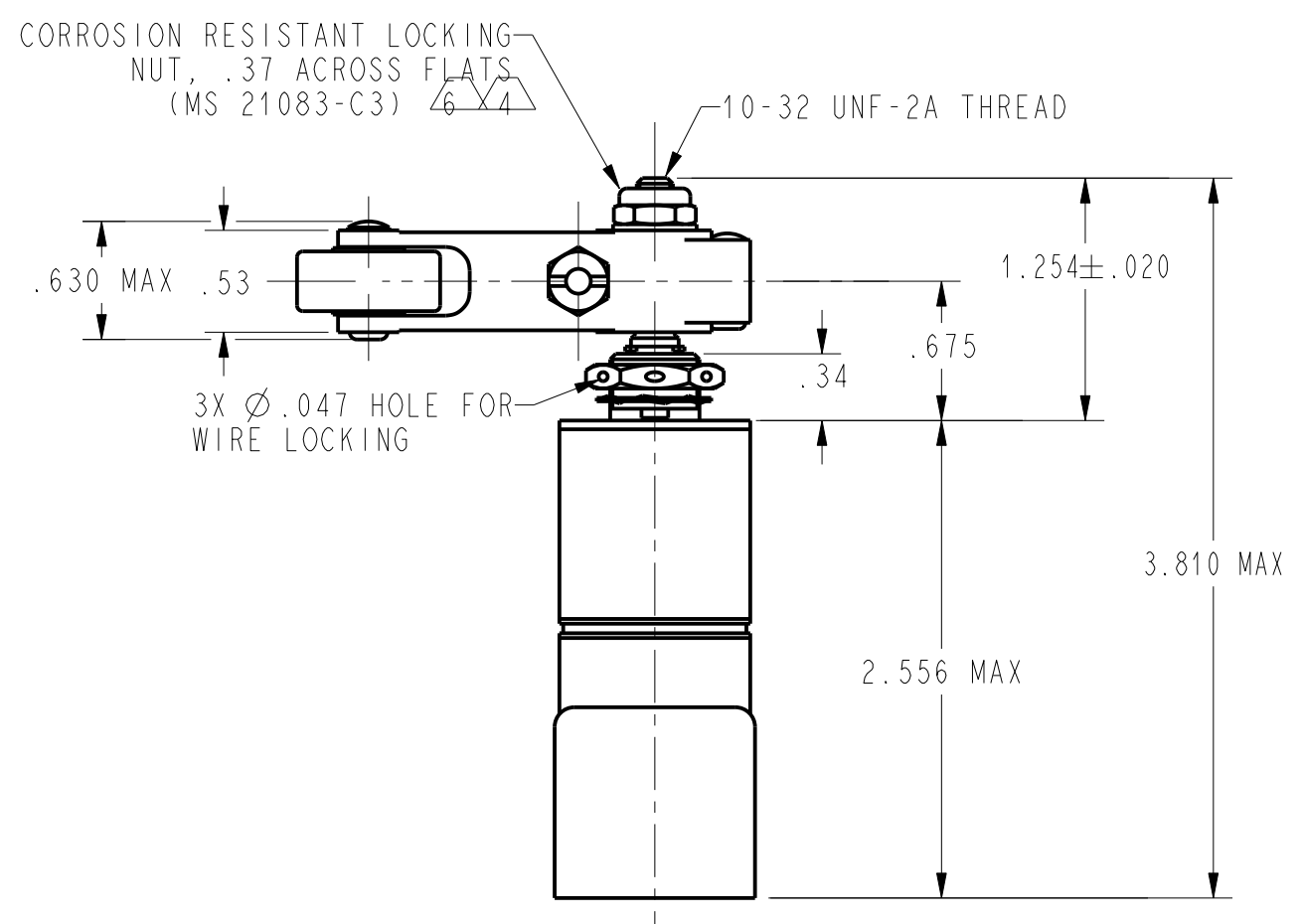
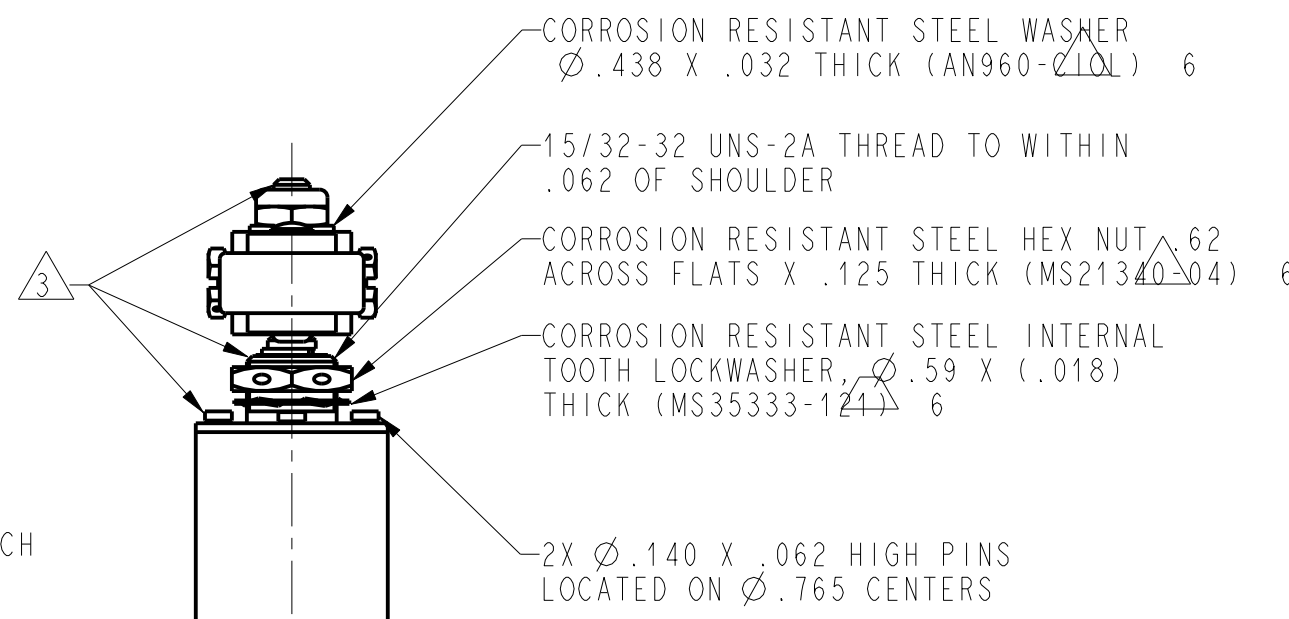
VIEW **A-A**
SCALE 2:1

(Ø.750) X .31 WIDE LAMINATED
PHENOLIC ROLLER



NOTES

- 1 - NOTED ELECTRICAL RATING APPLY AS SPECIFIED IN MIL-PRF-8805/40-1 UP TO 185°F
- 2 - SWITCH SEALED PER MIL-PRF-8805, SYMBOL 4
- 3 - CORROSION RESISTANT STEEL SHAFT, BUSHING AND PINS DO NOT APPLY MORE THAN 20-25 INCH-POUNDS OF TORQUE WHEN TIGHTENING LOCKING NUT
- 4 - CIRCUIT DIAGRAM, CAT LISTING, AND FCSM NO. ARE MARKED ON SWITCH
- 5 - HARDWARE MAY BE PACKAGED UNASSEMBLED PER MIL-PRF-8805
- 6 - REPLACEMENT MOUNTING HARDWARE - PACKET 19PA10
- 8 - .050 WIDE X .050 SLOT
- 9 - Ø.037 HOLE FOR WIRE LOCKING



131EN93-R
 DRAWING NUMBER
 ISSUE 6
 PAGES 1 OF 1
 RELEASE NO. PR-21908
 CHECK
 REVISIONS
 A 205916
 D L T 26 JUN 02
 B 0000868
 JUL 28 JUL 03
 CHECK
 SAV 26 JUN 02
 P.T.C./CAD [20]
 D L T 26 JUN 02

CHARACTERISTICS		ELECTRICAL DATA	
OPERATING TORQUE	12-25 IN LB	CONTACT ARRANGEMENT	
RELEASE TORQUE	9 IN LB MIN	2X S P D T (SEE CIRCUIT DIAGRAM)	
PRETRAVEL		LOAD	28 VDC
DIFFERENTIAL TRAVEL		SEA LEVEL	50,000 FT
OVERTRAVEL		RES	4
FREE POSITION		IND	2
		MOTOR	4

ANSI Y14.5M-1982 APPLIES

THIS DRAWING COVERS A PROPRIETARY ITEM AND IS THE PROPERTY OF MICRO SWITCH, A DIVISION OF HONEYWELL. THIS DRAWING IS NOT TO BE COPIED OR USED WITHOUT THE APPROVAL OF MICRO SWITCH.

MICRO SWITCH
a Honeywell Division

SWITCH - ENCLOSED

CATALOG LISTING
131EN93-R

THIRD ANGLE PROJECTION

SCALE FULL

DO NOT SCALE PRINT

UNLESS OTHERWISE SPECIFIED TOLERANCES ARE

ONE PLACE	(.0)	±.030
TWO PLACES	(.00)	±.015
THREE PLACES	(.000)	±.005
ANGLES		±

WEIGHT 12.0 OZ MAX

FED. MFG. CODE 91929