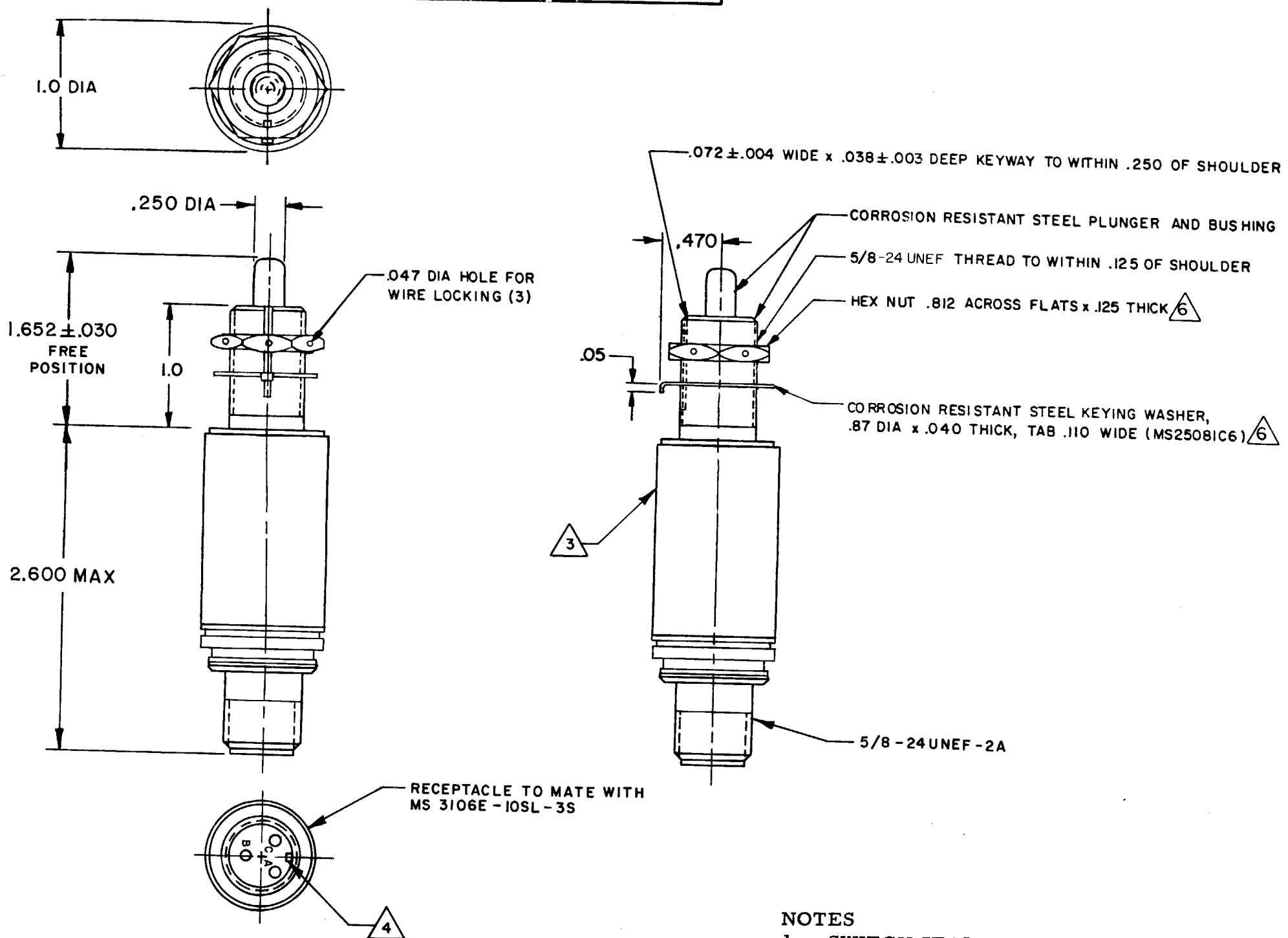
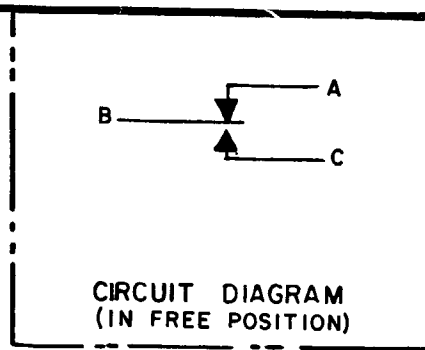


MICRO SWITCH
 FREEPORT, ILLINOIS, U.S.A.
 A DIVISION OF HONEYWELL
 FED. MFG. CODE 91929

SWITCH - ENCLOSED
 CATALOG LISTING
201EN5-RB

201EN5-RB
 M
 DRAWING NUMBER
 ISSUE 6
 REVISIONS
 A NEW DWG PR-7479 TRF 27 DEC 78
 B CO-45439 WJM 21 FEB 79
 C CO47573 J A P 7 AUG 80
 D CO 51923 T M M 1 OCT 82
 CHECK CEB 3 JAN 79
 DRAWN T R F 27 DEC 78
 FO-8288 1-A



- NOTES**
- 1 SWITCH SEALED PER MIL-S-8805, SYMBOL 4
 - 2 - ALL EXPOSED PARTS ARE CORROSION RESISTANT
 - 3 CATALOG LISTING, CIRCUIT DIAGRAM AND MICRO IDENTIFICATION PERMANENTLY MARKED ON SIDE OF SWITCH
 - 4 RECEPTACLE POLARIZING KEY POSITION
 - 5 - PLUNGER SEAL MATERIAL - E. P. RUBBER
 - 6 - HARDWARE MAY BE PACKAGED UNASSEMBLED PER MIL-S-8805

THIS DRAWING COVERS A PROPRIETARY ITEM AND IS THE PROPERTY OF MICRO SWITCH, A DIVISION OF HONEYWELL. THIS DRAWING IS NOT TO BE COPIED OR USED WITHOUT THE APPROVAL OF MICRO SWITCH.		THIRD ANGLE PROJECTION	SCALE FULL
CHARACTERISTICS		ELECTRICAL DATA	DO NOT SCALE PRINT
OPERATING FORCE ----- 6-10 LB	FULL OVERTRAVEL FORCE ----- 30 LB MAX	CONTACT ARRANGEMENT S P D T (2)	TOLERANCES APPLY TO DESIGN UNITS. CONVERSIONS ARE ONLY FOR REFERENCE. UNLESS NOTED, TOLERANCES ARE ±
RELEASE FORCE ----- 4 LB MIN	PRETRAVEL ----- .040 MAX	LOAD	DIM. TOL. DIM. TOL. mm mm/in in mm/in
DIFFERENTIAL TRAVEL ----- .020 MAX	OVERTRAVEL ----- .250 MIN	RES	NO PLACES X 1/04 ONE PLACE X,X 0.47/018 X,X 0.87/03 TWO PLACES X,XX 0.157/008 X,XX 0.387/015 THREE PLACES X,XXX X,XXX 0.13/005
		IND	ANGLES
		MOTOR	SI METRIC <input type="checkbox"/> US CUSTOMARY <input checked="" type="checkbox"/>
			DESIGN UNITS
			RAW MATERIAL-COMMERCIAL STANDARD MICRO SWITCH STANDARDS APPLY DIMENSIONS ARE TO BE MET BEFORE PROTECTIVE COATINGS ARE APPLIED
			WEIGHT 5 OZ MAX