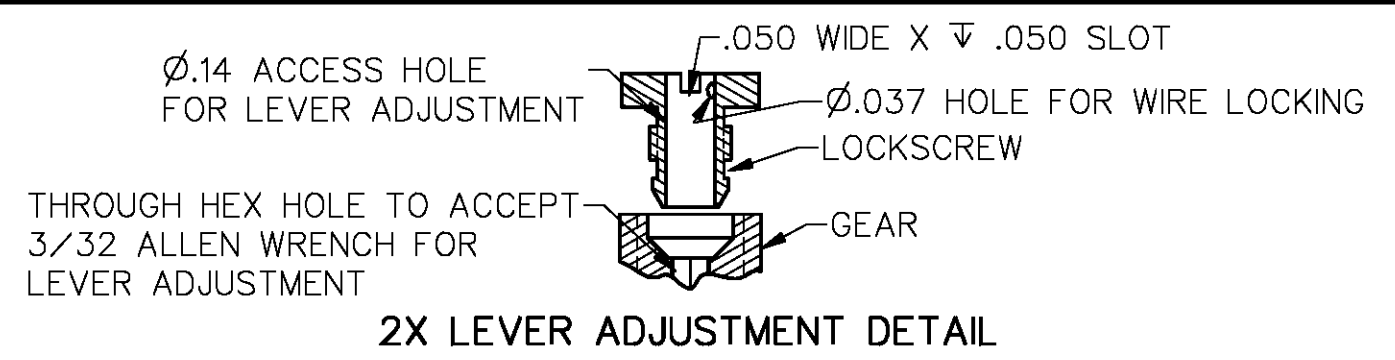
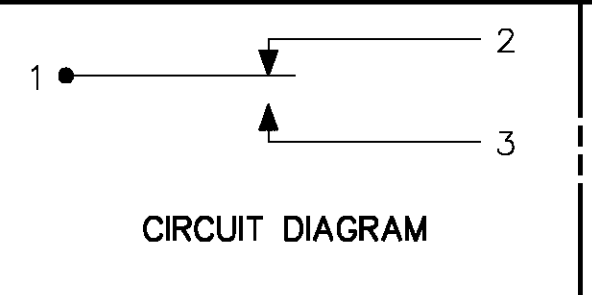


CHARACTERISTICS
FULL SCALE



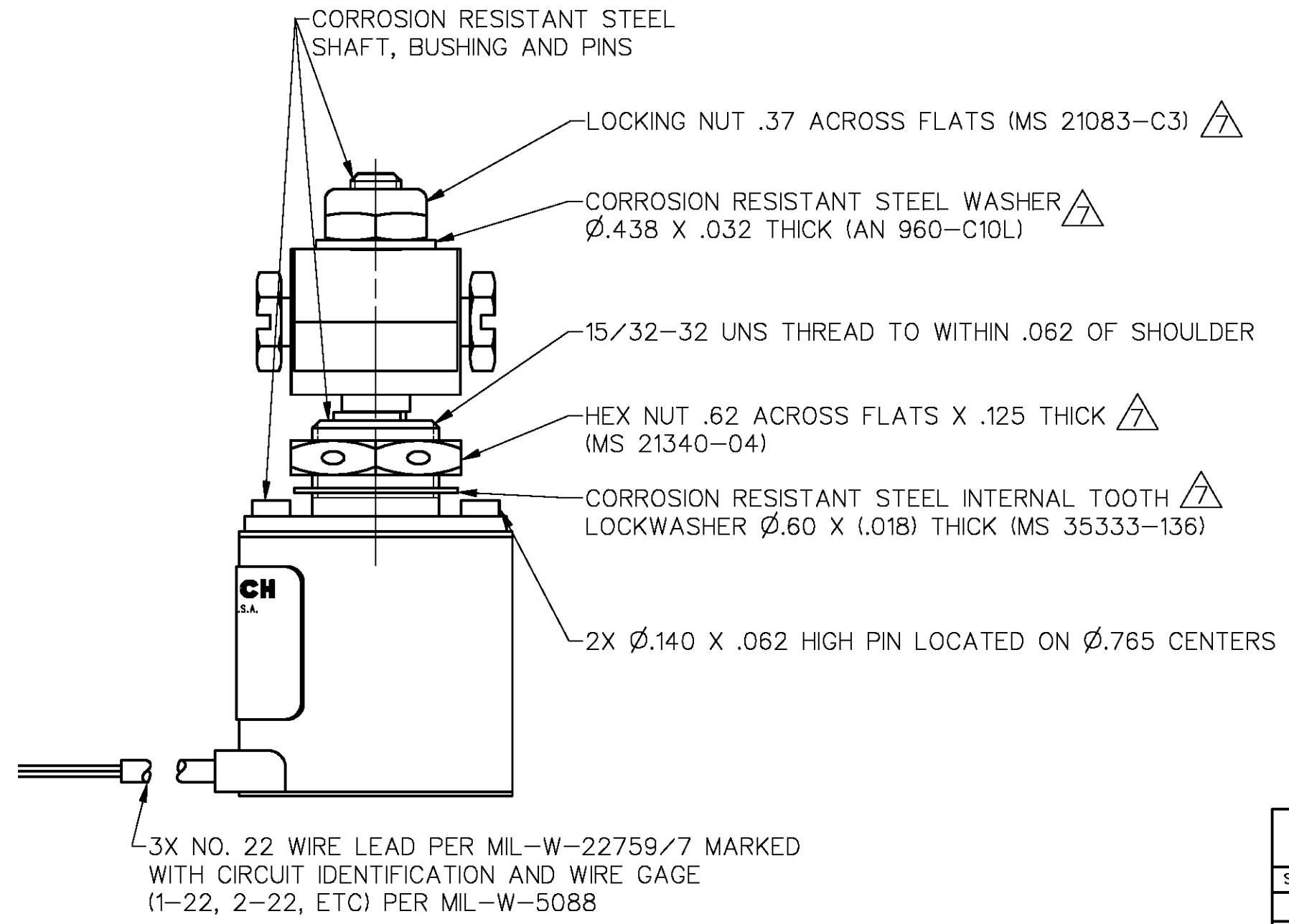
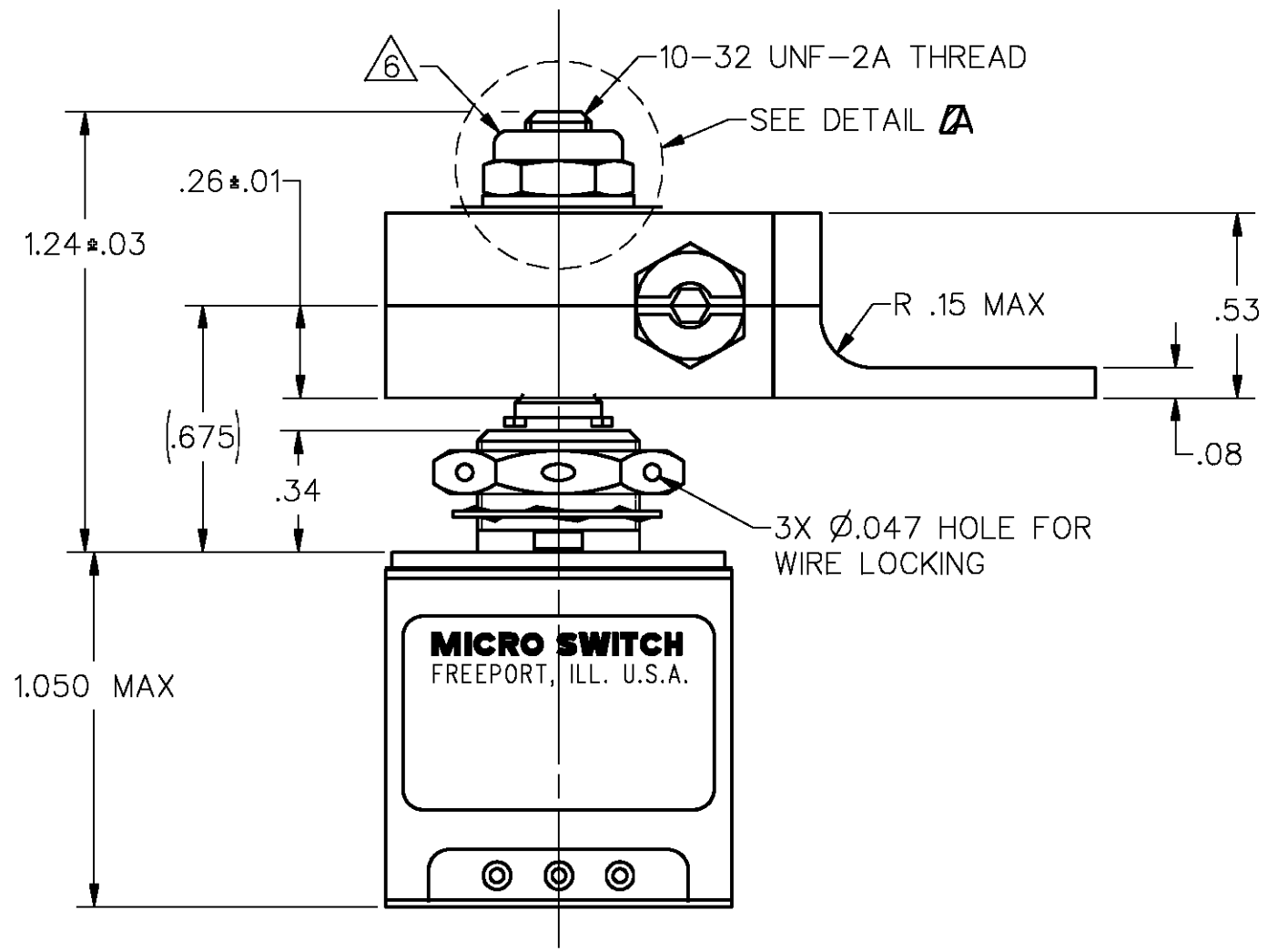
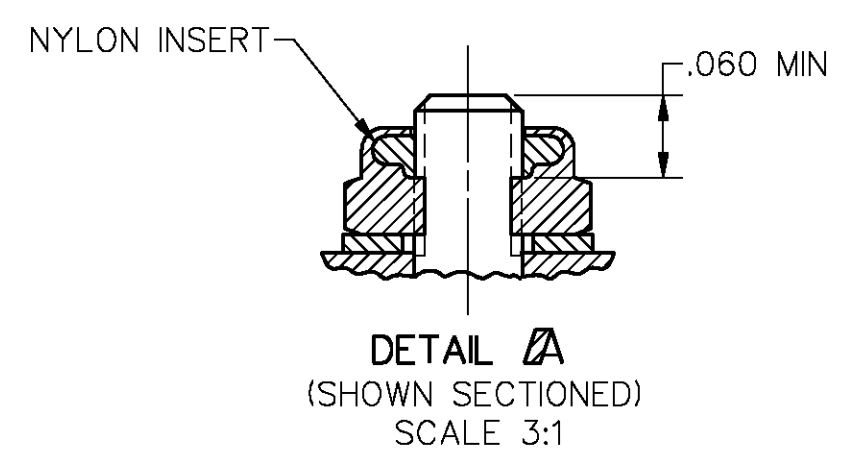
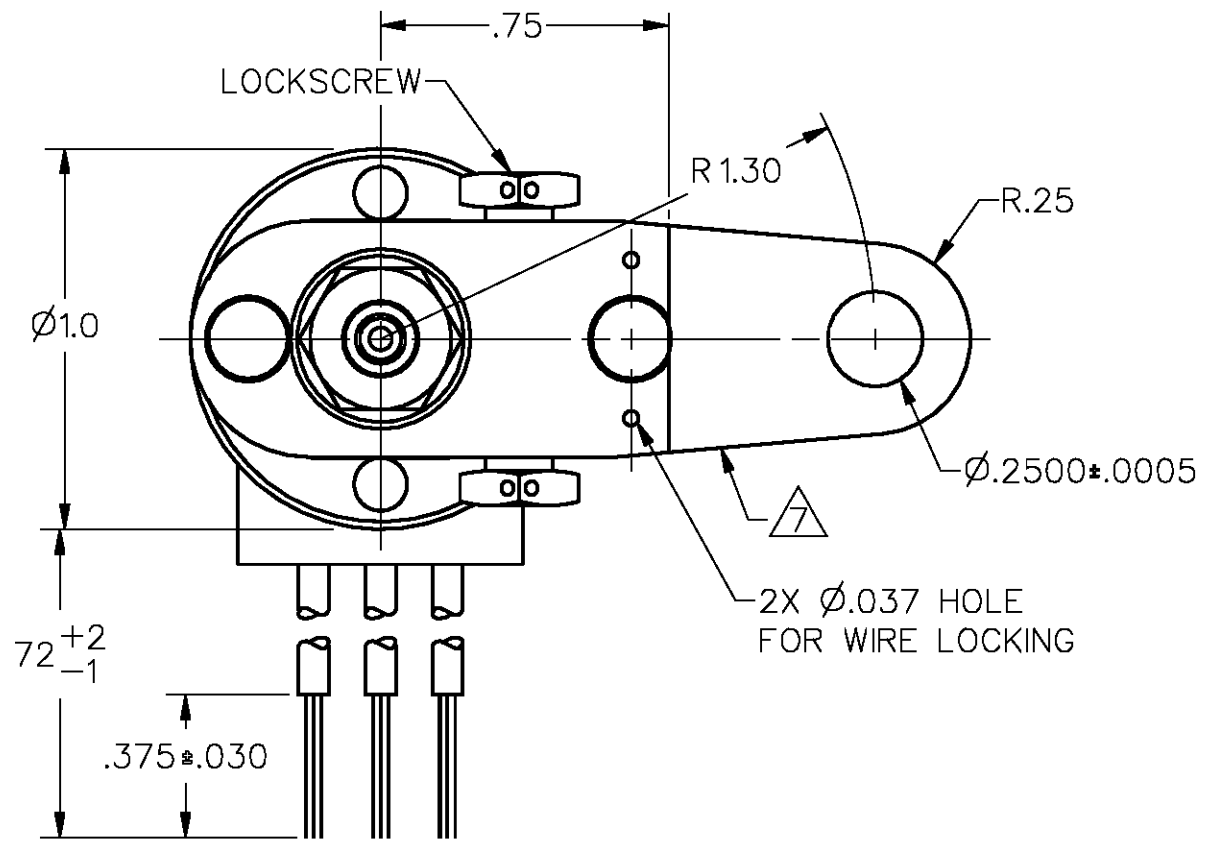
2X LEVER ADJUSTMENT DETAIL

LEVER MAY BE ADJUSTED FOR AN INFINITE NUMBER OF POSITIONS THRU 360°. ADJUSTMENT IS MADE BY LOOSENING THE LOCK NUT AND THEN THE LOCKSCREW AND TURNING GEAR UNTIL LEVER IS IN DESIRED POSITION. LOCKSCREW AND LOCK NUT ON SHAFT IS THEN TIGHTENED TO POSITIVELY LOCK LEVER IN POSITION



CIRCUIT DIAGRAM

- NOTES
- 1 - CORROSION RESISTANT STEEL ENCLOSURE
 - 2 - UNIT PROVIDES NO SHAFT RESTORING TORQUE. THE ACTUATING DEVICE MUST CONTROL MOVEMENT OF THE SHAFT
 - 3 - CIRCUIT DIAGRAM, CATALOG LISTING AND FEDERAL MANUFACTURING CODE AND CUSTOMER PART NO. 5M2079-001 ARE SHOWN ON NAMEPLATE
 - 4 - SWITCH SEALED PER MIL-S-8805 SYMBOL 4
 - 5 - GOLD CONTACT BASIC SWITCH
 - 6 - DO NOT APPLY MORE THAN 20-25 IN-LBS OF TORQUE WHEN TIGHTENING LOCKING NUT
 - 7 - HARDWARE MAY BE PACKAGED UNASSEMBLED PER MIL-S-8805



DRAWING NUMBER 41EN345-6
 ISSUE 2
 PAGE 1 OF 1
 RELEASE NO. PR-23430 REPLACES
 REVISIONS
 A PR-REL APR 23 1980
 JJA 27 APR 98
 DDM/CAD DRAWN
 JJA 22 APR 98 CHECK
 JJA 22 APR 98 CHECK
 JJA 22 APR 98 CHECK

CHARACTERISTICS		ELECTRICAL DATA	
OPERATING TORQUE - - - - 3 IN-LB MAX		CONTACT ARRANGEMENT S P D T	
PRETRAVEL	SEE DETAIL ABOVE	LOAD	28 VDC / 5
DIFFERENTIAL TRAVEL		SEA LEVEL	50,000 FT
OVERTRAVEL		RES	1.0
FREE POSITION		IND	0.5

ANSI Y14.5M-1982 APPLIES

MICRO SWITCH
a Honeywell Division
SWITCH-ENCLOSED

CATALOG LISTING
41EN345-6

THIRD ANGLE PROJECTION

SCALE 2:1

DO NOT SCALE PRINT

UNLESS OTHERWISE SPECIFIED TOLERANCES ARE

ONE PLACE	(.0)	±.030
TWO PLACES	(.00)	±.015
THREE PLACES	(.000)	±.005
ANGLES		±

WEIGHT .52 LB MAX