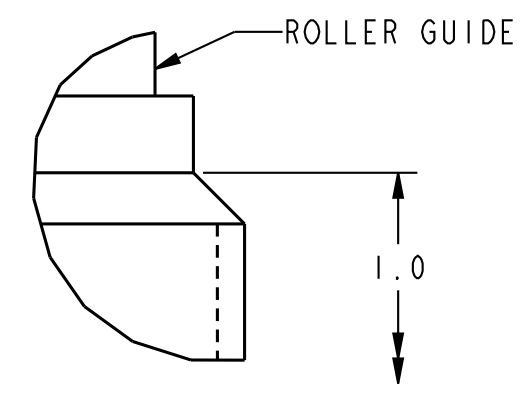
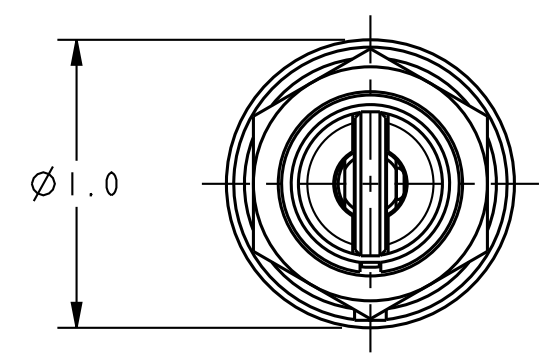
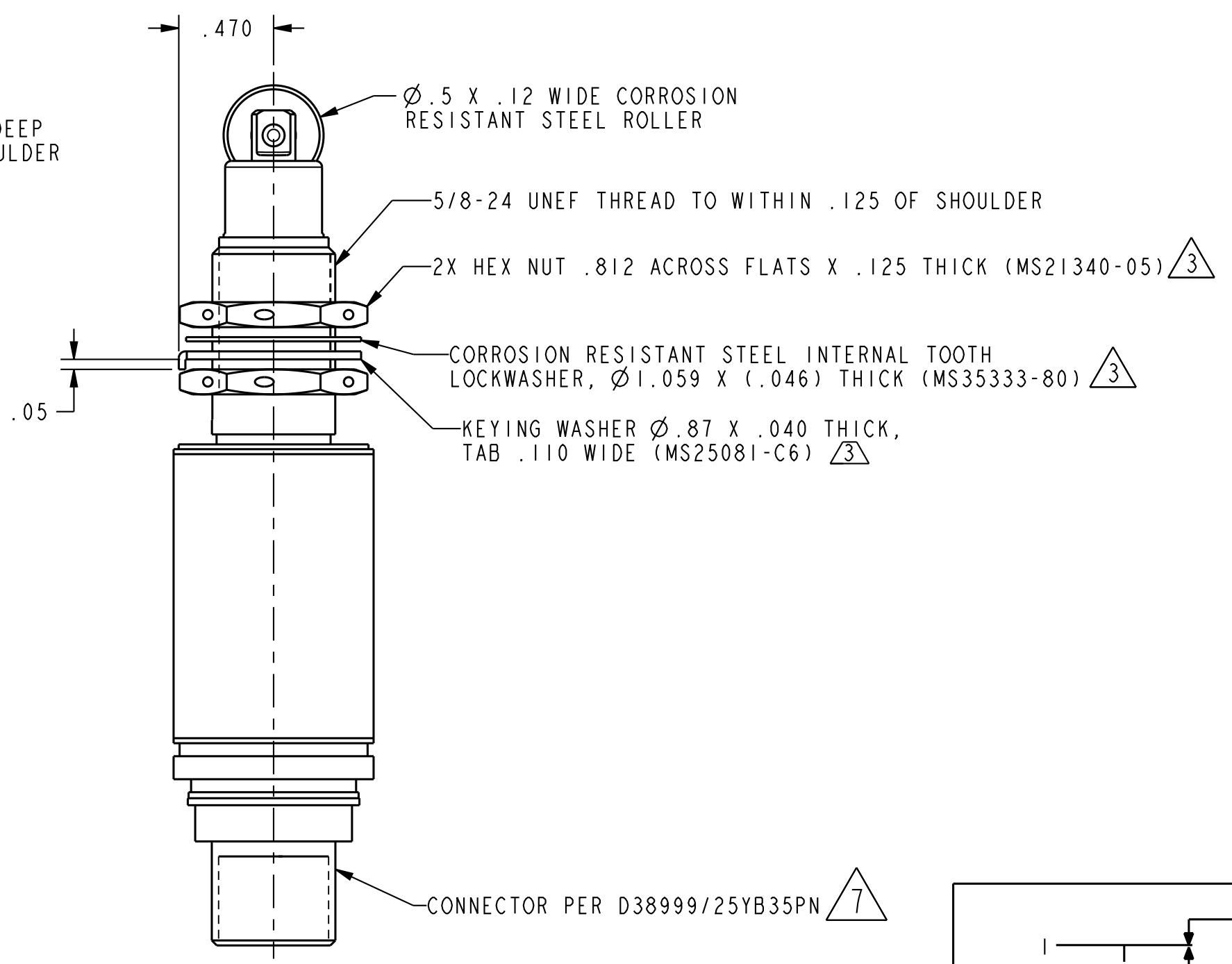
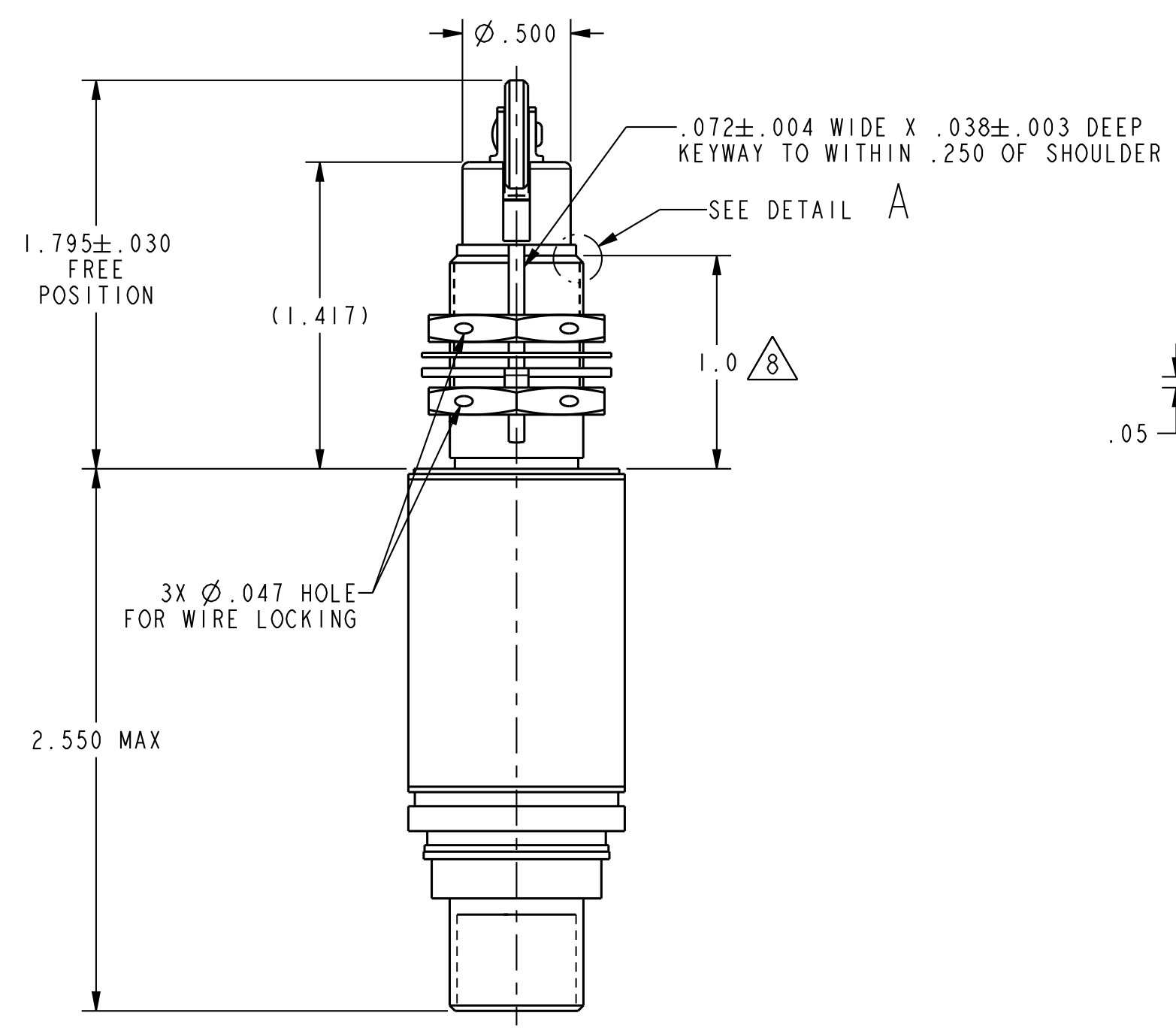


PART NUMBER
424EN222-RB
CUSTOMER PART NO.
2629E4582-1

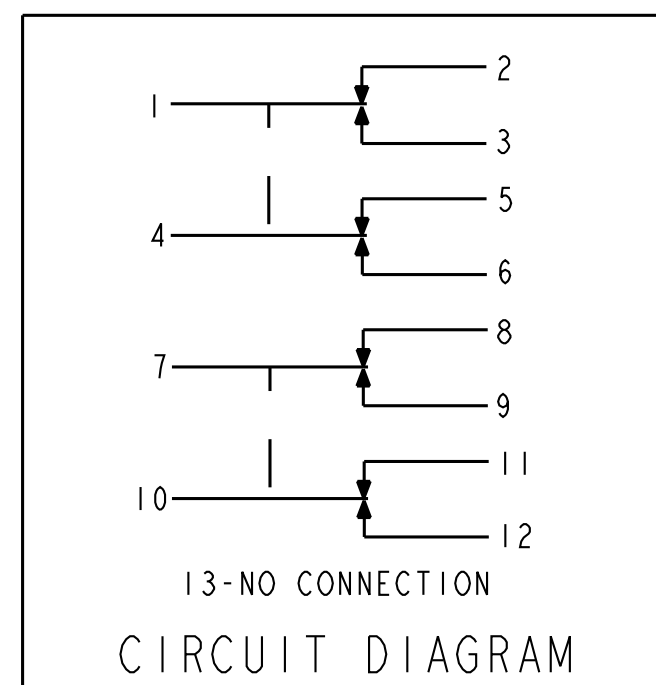
REVISION HISTORY					
REV	DOCUMENT	DESCRIPTION	CHGD BY	DATE	APPROVED
D	0098684	ADDED VIEW DETAIL A, NOTE-8	RKA	2013-03-07	T. DAN



DETAIL A
SCALE 8:1



- NOTES:
- 1 - CORROSION RESISTANT STEEL ENCLOSURE
 - 2 - SWITCH SEALED PER MIL-PRF-8805 SYMBOL 4
 - 3 - HARDWARE MAY BE PACKAGED UNASSEMBLED PER MIL-PRF-8805
 - 4 - CATALOG LISTING, DATE CODE, FED.MFG CODE, CUSTOMER PART NUMBER, SERIAL NUMBER AND CIRCUIT DIAGRAM ARE PERMANENTLY MARKED ON SWITCH HOUSING
 - 5 - COINCIDENCE OF OPERATING AND RELEASING POINTS:
.010 INCH OF PLUNGER TRAVEL
 - 6 - GOLD CONTACT BASIC SWITCHES
 - 7 - CONNECTOR MAIN POLARIZING KEYWAY (180°) FROM BUSHING KEYWAY
 - 8 - SURFACE SHALL MEET 2.5 MILLIOHMS MAX PER JOINT; VALIDATED IN HONEYWELL REPORT #86183



CHARACTERISTICS		ELECTRICAL DATA		UNLESS OTHERWISE SPECIFIED DIMENSIONS ARE IN INCHES DECIMAL TOL		THIRD ANGLE PROJECTION		Honeywell			
OPERATING FORCE-----	6-12 LB	CONTACT ARRANGEMENT		NO PLACE ---- -				TITLE SWITCH - ENCLOSED			
FULL OVERTRAVEL FORCE-----	30 LB MAX	4X S P D T 6		1 PLACE --- ±.030							
RELEASE FORCE -----	4 LB MIN	LOAD	28 VDC	2 PLACE --- ±.015		SIZE	CAGE CODE	DWG NO	TYPE	REV	
PRETRAVEL-----	.040 MAX	RES	SEA LEVEL	50,000 FT	3 PLACE --- ±.005		C	-	424EN222-RB	I	D
DIFFERENTIAL TRAVEL-----	.020 MAX	IND	0.5	0.5	ANGULAR TOL - - CHAMFER - -		SCALE	3:2	REF WT: .46 LBS MAX	SHEET 1 of 1	
OVERTRAVEL-----	.250 MIN					MATERIAL		RELEASE DATE	2005-03-23	HONEYWELL CONFIDENTIAL THIS DOCUMENT CONTAINS PROPRIETARY INFORMATION AND SUCH INFORMATION MAY NOT BE DISCLOSED TO OTHERS FOR ANY PURPOSE, NOR USED FOR MANUFACTURING PURPOSE'S WITHOUT WRITTEN PERMISSION FROM HONEYWELL	
						FINISH		DRW: DVM	2005-03-23		
						APPLICABLE DOCUMENTS: ASME Y14.100-2004 ASME Y14.5-2009		RDE: -	-		
						COMPUTER GENERATED DRAWING: PRO/ENGINEER		QA: -	-		
								CHK: AK	2005-03-23		