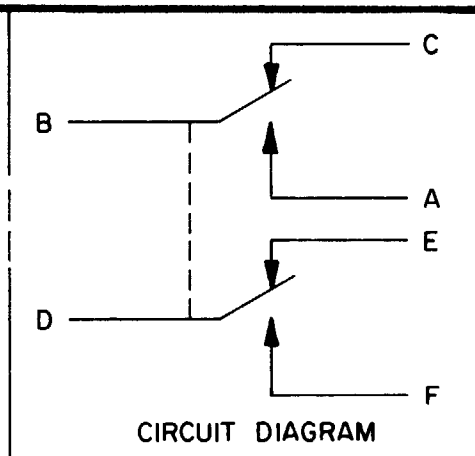


MICRO SWITCH
 FREEPORT ILLINOIS U.S.A.
 A DIVISION OF HONEYWELL
 FED. MFG. CODE 81888

SWITCH - ENCLOSED

CATALOG LISTING
602EN147-RB



602EN147-RB

M

DRAWING NUMBER

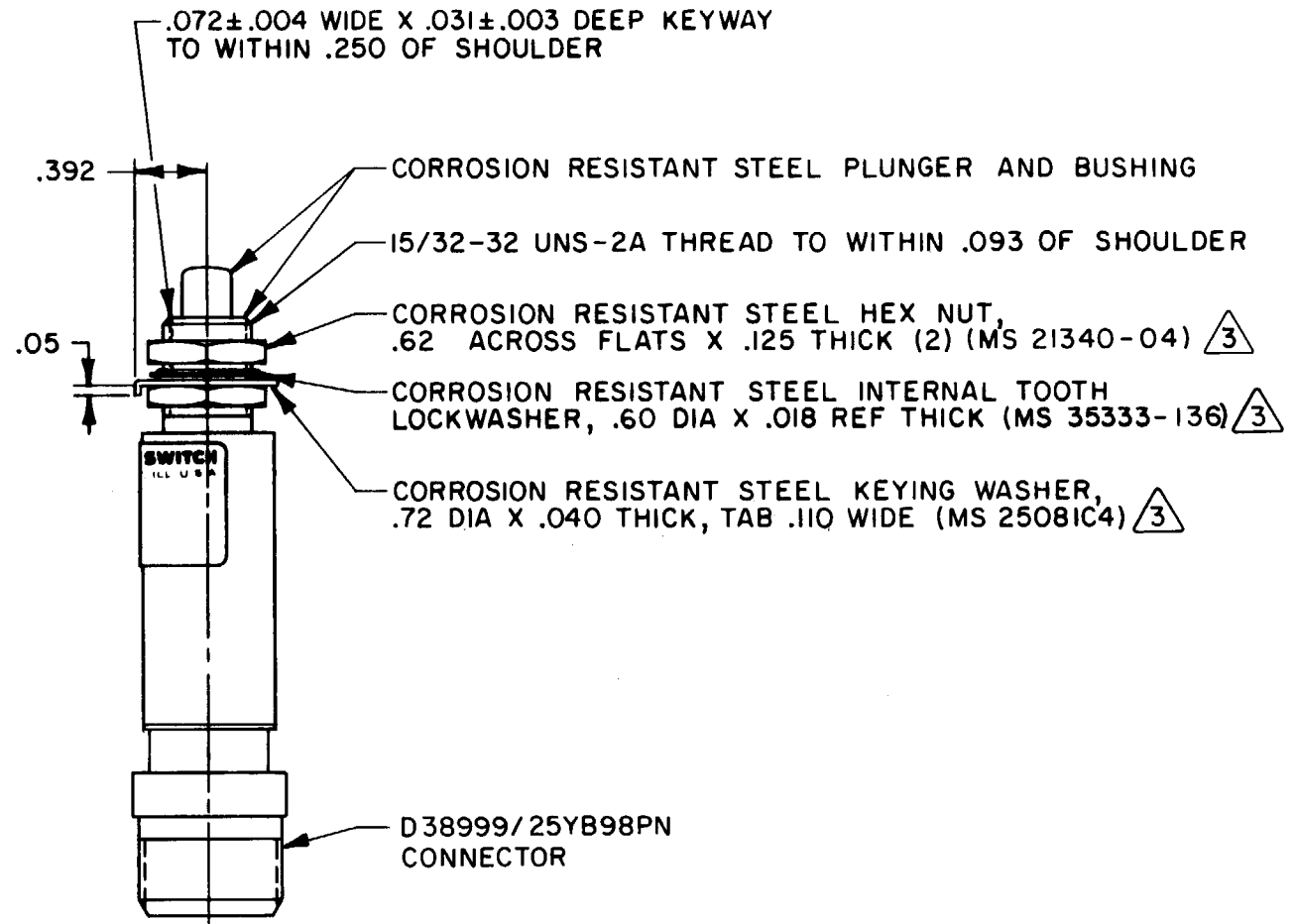
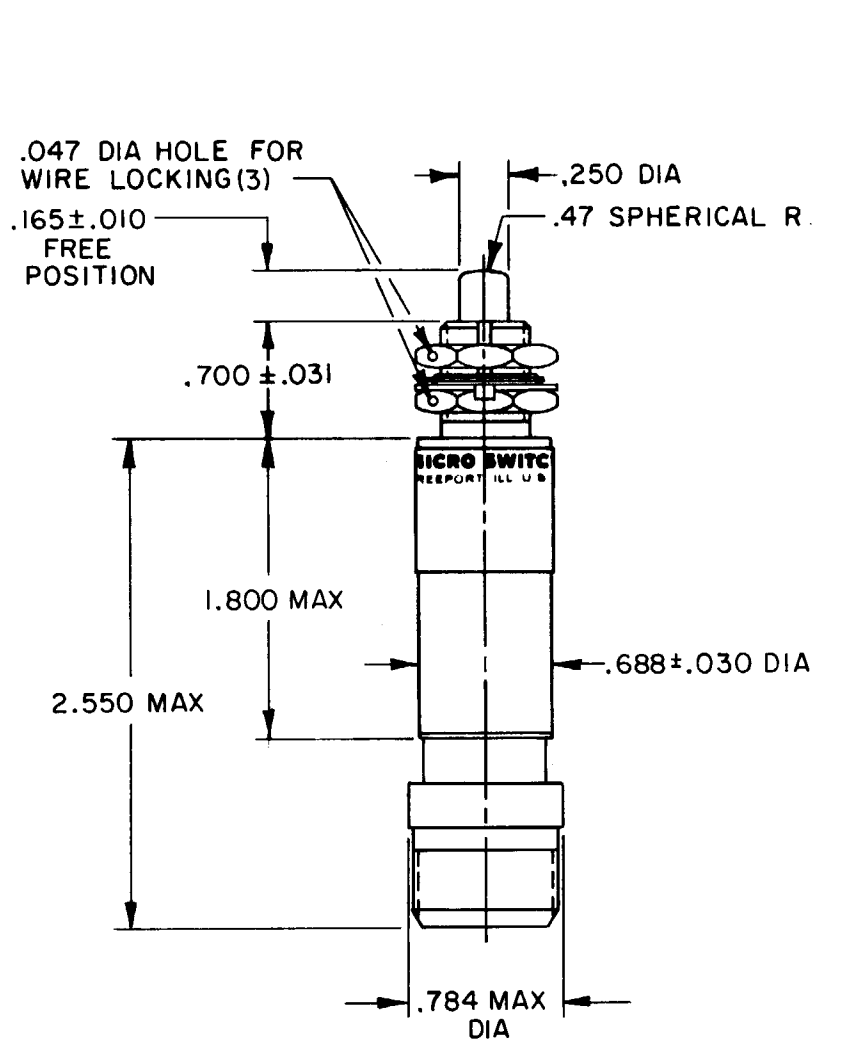
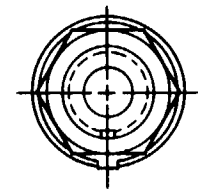
ISSUE

5

REPLACES

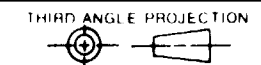
RELEASE NC PR-15447

REV	DATE	BY	CHK	DESCRIPTION
A	15447	DJS	PR	
B	8 APR 87	KAG	PR	
C	9 JUL 87	KAG	PR	
D	25 JUL 92	WES	PR	
E	2 SEP 93	WES	PR	



- NOTES**
- 1 - CORROSION RESISTANT STEEL ENCLOSURE
 - 2 - SWITCH SEALED PER MIL-S-8805 SYMBOL 4
 - 3 - HARDWARE MAY BE PACKAGED UNASSEMBLED PER MIL-S-8805
 - 4 - CIRCUIT DIAGRAM AND CATALOG LISTING ARE SHOWN ON NAMEPLATE

THIS DRAWING COVERS A PROPRIETARY ITEM AND IS THE PROPERTY OF MICRO SWITCH, A DIVISION OF HONEYWELL. THIS DRAWING IS NOT TO BE COPIED OR USED WITHOUT THE APPROVAL OF MICRO SWITCH.



SCALE FULL
 DO NOT SCALE PRINT

CHARACTERISTICS

OPERATING FORCE	10 LB MAX
FULL OVERTRAVEL FORCE	30 LB MAX
RELEASE FORCE	1 LB MIN
PRETRAVEL	.020-.030
DIFFERENTIAL TRAVEL	.020 MAX
OVERTRAVEL	.125 MIN

ELECTRICAL DATA

LOAD	CONTACT ARRANGEMENT	
	D P D T	
	28 VDC	
RES	5	5
IND	1	1
MOTOR		
LAMP	2	2

TOLERANCES
 APPLY TO DESIGN UNITS. CONVERSIONS ARE ONLY FOR REFERENCE. UNLESS NOTED, TOLERANCES ARE ±

DIM.	TOL.	DIM.	TOL.	
mm	mm/in	in	mm/in	
NO PLACES	X	1/64	X X	0.8/03
ONE PLACE	X,X	0.01/018	X XX	0.38/015
TWO PLACES	X,XX	0.19/008	X XXX	0.13/005
THREE PLACES	X,XXX			

DESIGN UNITS: SI METRIC US CUSTOMARY

RAW MATERIAL-COMMERCIAL STANDARD
 MICRO SWITCH STANDARDS APPLY
 DIMENSIONS ARE TO BE MET BEFORE
 PROTECTIVE COATINGS ARE APPLIED

WEIGHT 2.0 OZ MAX