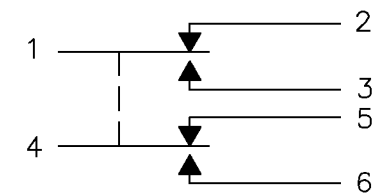


**MICRO SWITCH**  
a Honeywell Division

FED. MFG. CODE 91929

**SWITCH-ENCLOSED**

CATALOG LISTING  
**622EN230**



**CIRCUIT DIAGRAM**

CATALOG LISTING  
**622EN230**

PAGE 1 OF 1

ISSUE  
**M**  
2

REVISIONS  
A PR-REL  
PR23406  
LJK  
11 MAY 98

DDM/CAD  
DRAWN  
LJK 11 MAY 98

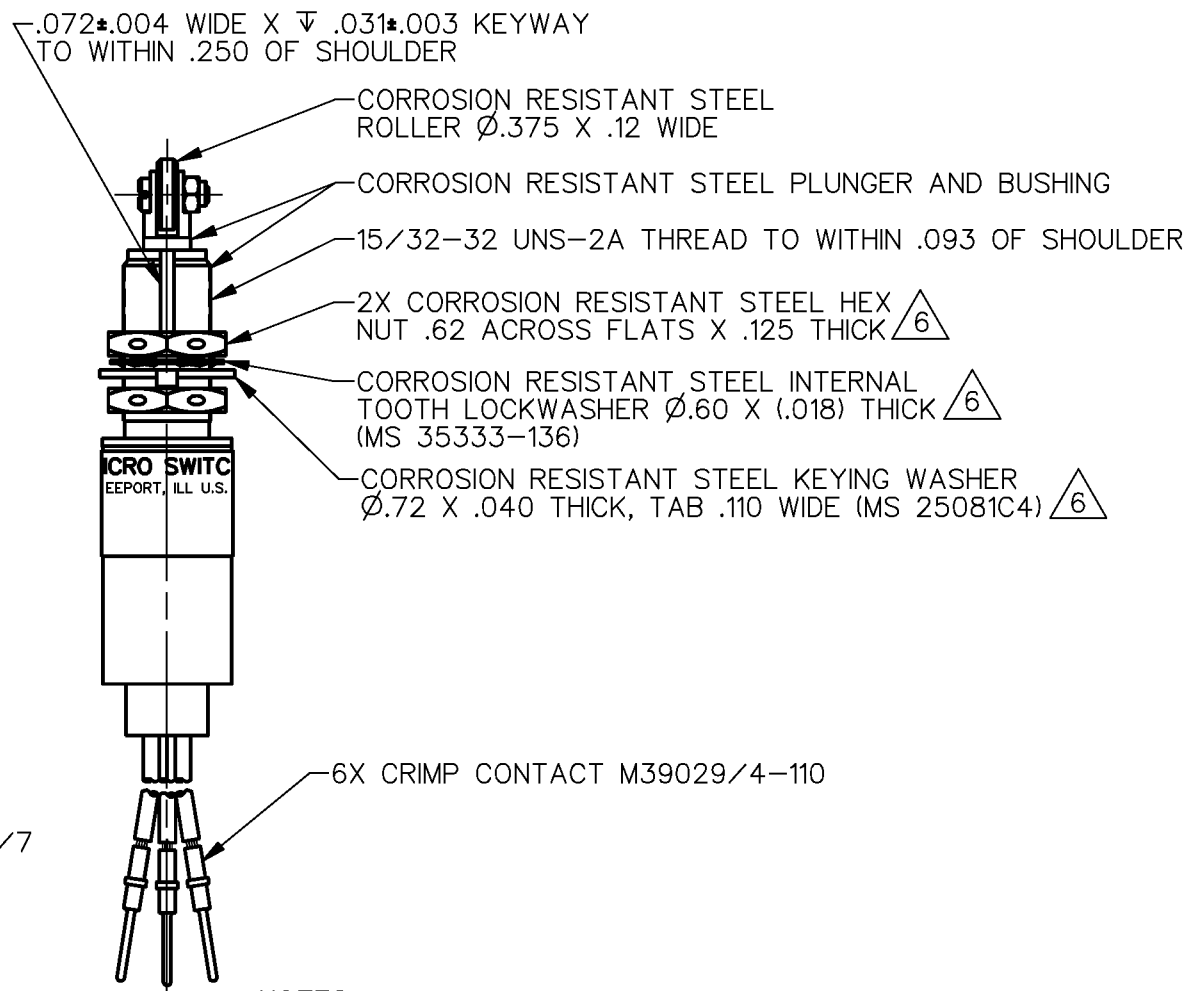
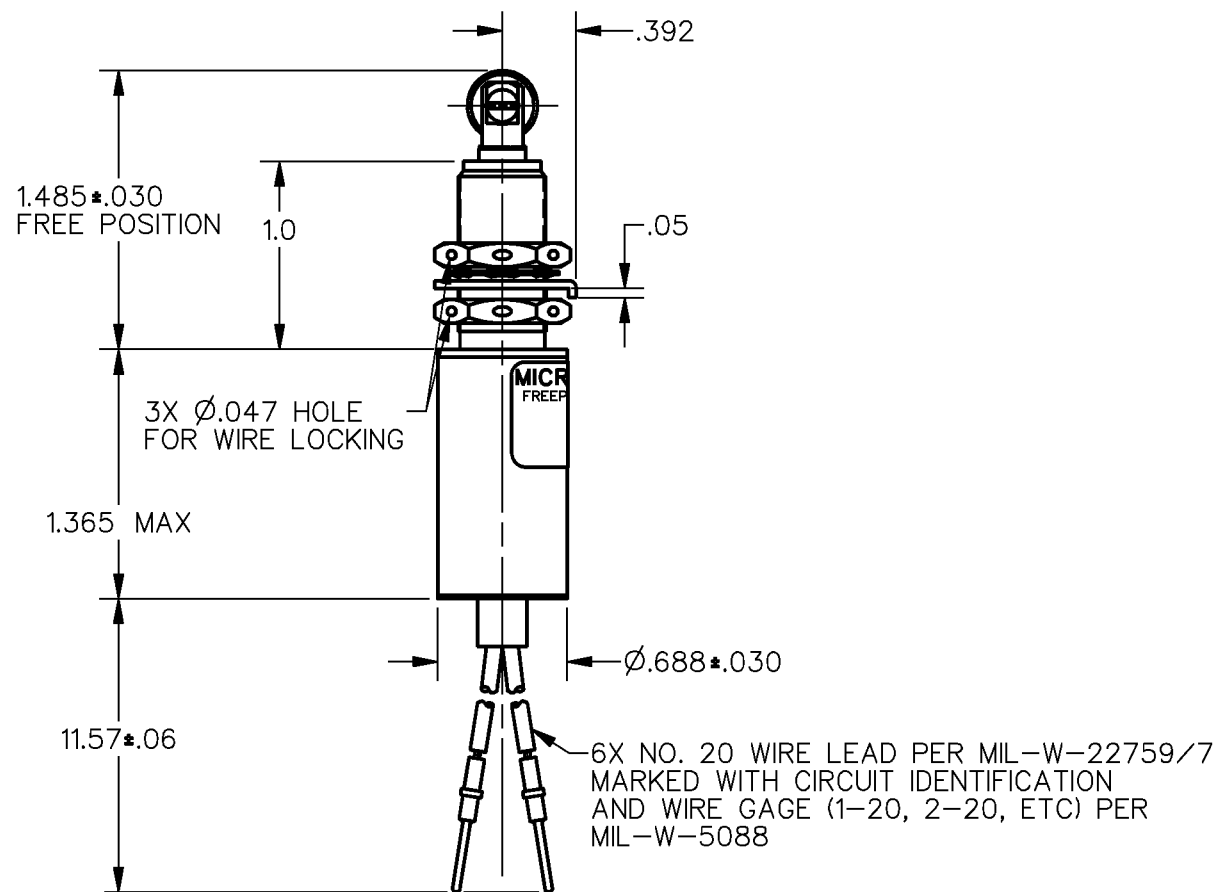
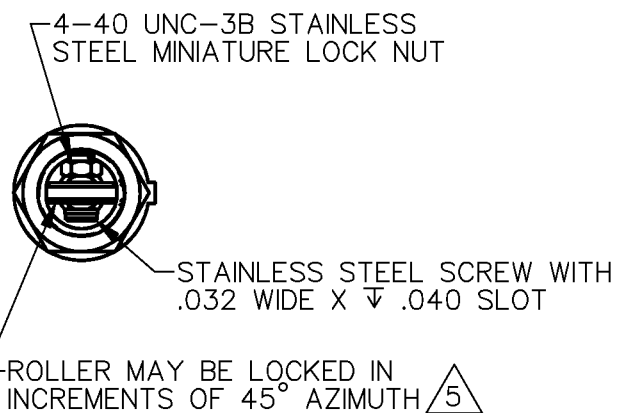
REPLACES

RELEASE NO. PR-23406

CHECK

CHECK

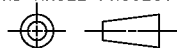
CHECK



- NOTES
- 1 - CORROSION RESISTANT STEEL ENCLOSURE
  - 2 - SWITCH SEALED PER MIL-S-8805 SYMBOL 4
  - 3 - COINCIDENCE OF OPERATING AND RELEASING POINTS: .010 OF PLUNGER TRAVEL
  - 4 - CIRCUIT DIAGRAM, AND CATALOG LISTING SHOWN ON NAMEPLATE TO ADJUST ROLLER DIRECTION, REMOVE LOCK NUT, SCREW, AND ROLLER. DEPRESS PLUNGER UNTIL IT CAN BE ROTATED TO DESIRED POSITION. RETURN PLUNGER TO FREE POSITION AND REASSEMBLE ROLLER
  - 5 - HARDWARE MAY BE PACKAGED UNASSEMBLED PER MIL-S-8805
  - 6 - BIFURCATED GOLD CONTACT BASIC SWITCHES

THIS DRAWING COVERS A PROPRIETARY ITEM AND IS THE PROPERTY OF MICRO SWITCH, A DIVISION OF HONEYWELL. THIS DRAWING IS NOT TO BE COPIED OR USED WITHOUT THE APPROVAL OF MICRO SWITCH

THIRD ANGLE PROJECTION



**CHARACTERISTICS**

OPERATING FORCE	6 - 12 LB
FULL OVERTRAVEL FORCE	30 LB MAX
RELEASE FORCE	4 LB MIN
PRETRAVEL	.040 MAX
DIFFERENTIAL TRAVEL	.020 MAX
OVERTRAVEL	.125 MIN

**ELECTRICAL DATA**

CONTACT ARRANGEMENT		
2X SPDT $\triangle 7$		
28 VDC		
LOAD	SEA LEVEL	50,000 FT.
RES	1	1
IND	0.5	0.5

SCALE FULL

DO NOT SCALE PRINT

UNLESS OTHERWISE SPECIFIED TOLERANCES ARE

ONE PLACE	(.0)	± .030
TWO PLACE	(.00)	± .015
THREE PLACE	(.000)	± .005
ANGLES		±

WEIGHT

ANSI Y14.5M-1982 APPLIES